

Population

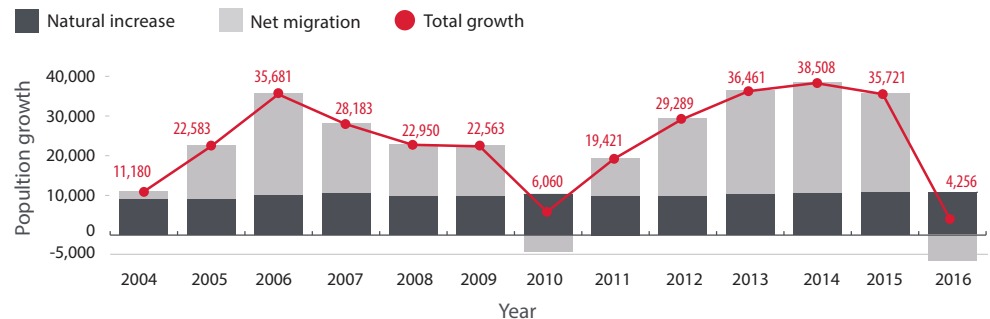
This Snapshot is part of an information package created by The City. For more information, please visit calgary.ca/geodemographics

Citizens interact with The City through the services it provides. To make sure we're delivering the right services, we closely monitor population growth and change. This info sheet looks at what's shaping our population: how many people live here, where they are, and how that's changing over time.

Calgary is growing

Over its history, Calgary has had fairly continuous growth. Our historically strong economy and high quality of life have made Calgary an attractive city to live in.

- Since 1984, Calgary's population has doubled in size from approximately 600,000 to over 1.2 million people.
- This equates to an annual growth rate of 2.6 per cent, making us the fastest growing major city in Canada.



Population growth is calculated by two components:

Natural Increase



The number of births



The number of deaths



Net Migration



The number of people moving here



The number of people moving away

Quick Facts

Calgary's population **Doubled** in **30 years**

On average, we grew by **2.2%** per year,

Twice the national average

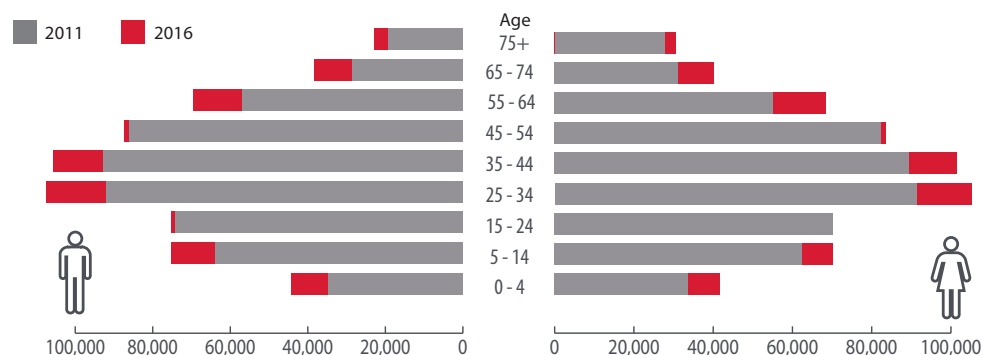
110,000 new residents were added to Calgary from 2012 to 2015

Calgary is changing

While our population has been growing, it has also been changing in unique ways. The population pyramid below shows that Calgary has experienced several demographic shifts over the past five years:

- Growth in the number of 55-64 age cohort as the first wave of baby boomers enter or near retirement;
- A strong increase in the number of adults 25-44, likely drawn here because of strong employment prospects; and
- A mini baby boom as the number of children aged 0-4 has increased by 25% in five years.

Though a large segment of our population is aging out of the work force, our demographic makeup leaves us in a far better position than many other Canadian cities.



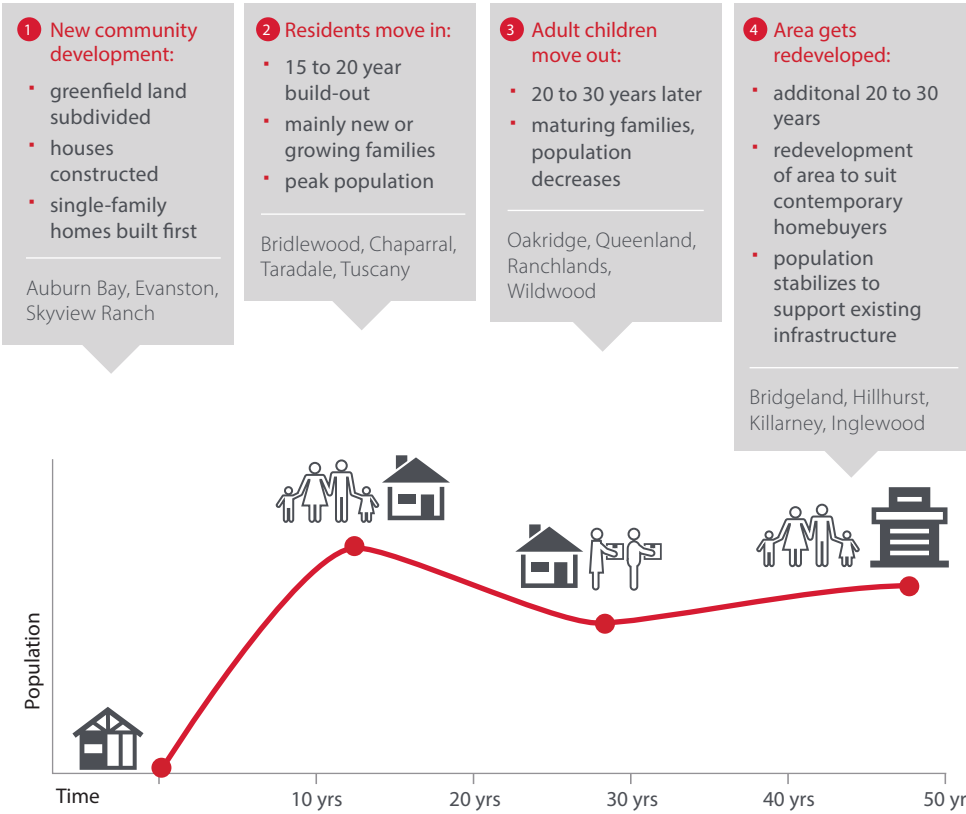
Where is growth and change happening?

Not every community in the city changes at the same rate, or even in the same direction. Each community grows differently depending on where it falls within its community life cycle.

Community life cycle in Calgary

Since 2010, the highest-growth communities have been new communities and developing suburbs on the edge of the city. Next generation communities are experiencing a net decrease in population over the past five years, making it more difficult for them to support amenities such as schools, high-frequency transit, and retail.

Likewise, Calgary's inner-city communities have relatively stable populations. However, the significant growth we've experienced over the past 15 years has resulted in a surge of multi-family development to the inner city, especially in the Centre City. This growth brings new residents and jobs, but also requires additional services. We're closely watching Calgary's growth to ensure people get the services they need.



Patterns of population growth and decline

■ Gain
■ Loss

