

Calgary



Centre City Levy 2025 Annual Report

Publishing Information

Title: Centre City Levy 2025 Annual Report

Author: The City of Calgary

Contact: 311

ISC: Unrestricted

SR: 26-0054046-CRV-44724

© The City of Calgary

ISC: Unrestricted

Contents

Introduction.....2

Centre City Plan Area3

Centre City Levy Rates4

Overview.....5

Schedules

Schedule A – Transportation Centre City Levy 2025 Summary8

Schedule B – Water Centre City Levy 2025 Summary10

Schedule C – Community Services Centre City Levy 2025 Summary.....11

Appendices

Appendix 1 – 2025 Centre City Levy Collection Details12

Tables

Table 1: Centre City Levy Rates by Infrastructure Type4

Table 2: Centre City Levy Balance Collected and Spent5

Table 3: Centre City Levy Balance per Financial Statements5

Table 4: Centre City Levies 2025 Summary by Infrastructure Type7

Table 5: Transportation Centre City Levy 2025 Summary8

Table 6: Water Centre City Levy 2025 Summary10

Table 7: Community Services Centre City Levy 2025 Summary11

Table 8: 2025 Centre City Levy Collection Details as Required by the Municipal Government Act12

Figures

Figure A: Centre City Plan Area.....3

Figure B: Total Centre City Levies Collected and Investment Income Earned6

Figure C: Total Centre City Levies Spent.....6

Introduction

The City of Calgary’s **Centre City Levy Annual Report** provides an overview of the levies collected and spent in the Centre City Plan Area. This report is prepared in accordance with the [Municipal Government Act \(MGA\)](#). The 2025 levy balance will continue to fund projects in line with Council direction and [Bylaw 38M2009](#).

The Centre City Levy program is a funding tool used to collect levies from new developments to help fund local utility infrastructure and public realm improvements, supporting new growth within the Centre City Plan Area.

Under the MGA, municipalities are permitted to charge levies to developers through a bylaw to support development. In Calgary, Centre City Levies are collected to fund local infrastructure needs associated with development in the Centre City Plan Area. Levies are collected from development projects based on the length of a parcel’s frontage. The funds collected, often combined with other funding sources, are invested in infrastructure programs that support growth, quality of life, and long-term resilience in the Centre City.

Centre City Levy rates were established by Council on February 8, 2010, through report [LPT2010-03](#), and have remained unchanged since that time.

In accordance with Council direction, Centre City Levy funds may be used to support the following types of infrastructure:

- Construction, upgrading, and replacement of water and sanitary sewer mains required for or impacted by a proposed subdivision or development.
- Community and recreation infrastructure.
- Alternative transportation infrastructure.
- Improvements to local parks, regional pathways, and regional parks.
- The 13 Avenue Greenway.

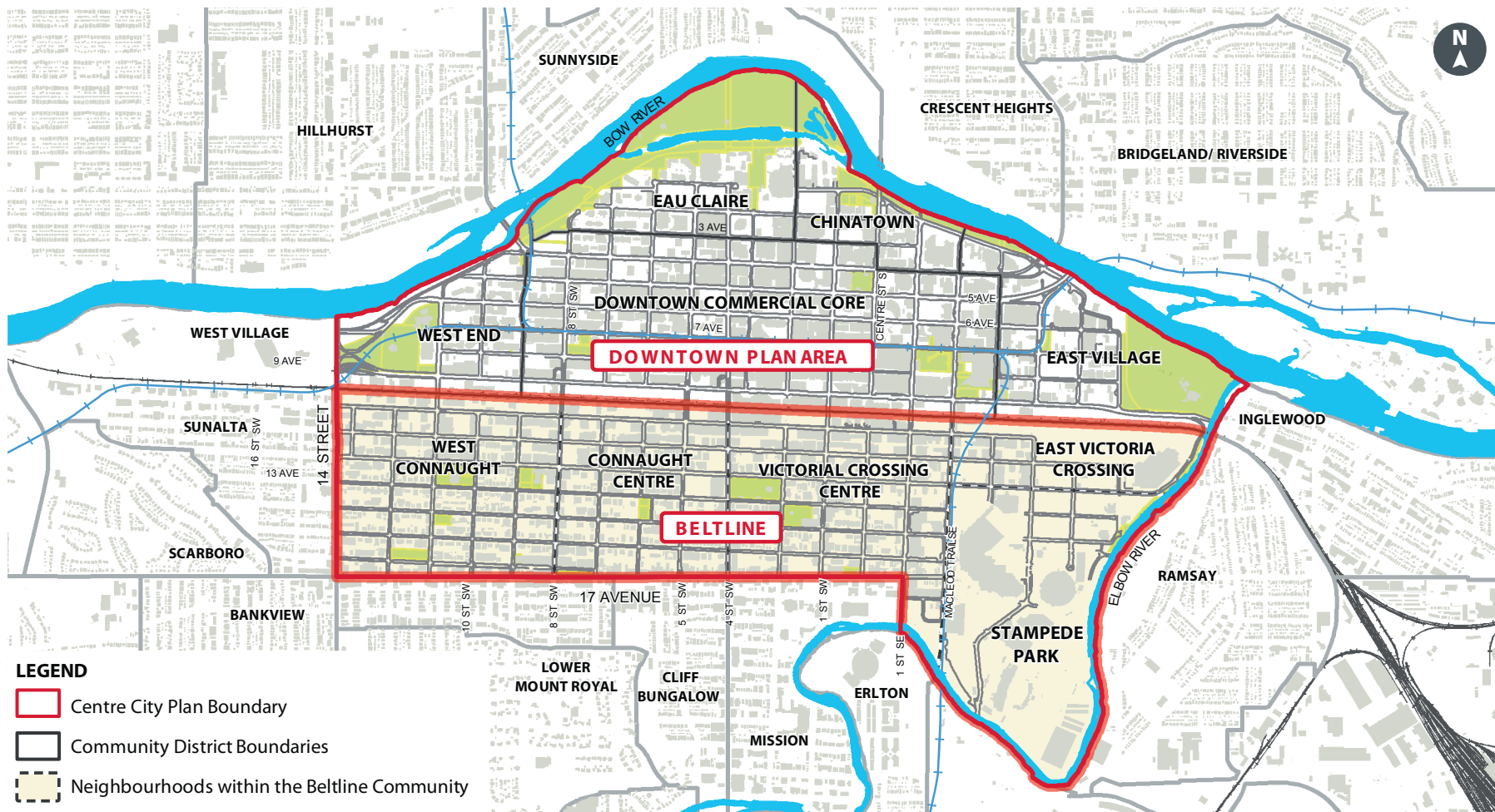


Centre City Plan Area

Calgary's Centre City Plan Area is bound by the Bow and Elbow Rivers to the North and East, 17 Avenue to the South and 14 Street to the West. It includes the communities of:

Downtown Commercial Core, Downtown East Village, Beltline, Downtown West End, Eau Claire and Chinatown. The Centre City Levy Plan Area shows where the Centre City Levy is charged on new development, and where the levy funds can be used to support infrastructure projects.

Figure A: Centre City Plan Area



Centre City Levy Rates

Table 1 identifies the Centre City Levy rates. The Centre City Levy is collected from all development projects in the Centre City Plan Area on a linear frontage basis, calculated using the length of the parcel’s frontage on the avenues. Each infrastructure category has a different amount collected. These rates have not increased since 2010.

Table 1: Centre City Levy Rates by Infrastructure Type

| Centre City Levy Rates by Infrastructure Type | | | Levy Rates, by Year | | |
|---|---|--|-------------------------------|--------------------------------------|---|
| Infrastructure Type | Infrastructure Category | Authorization | 2007 Frontage Levy/Metre (\$) | 2008 & 2009 Frontage Levy/Metre (\$) | Effective 2010 Frontage Levy/Metre (\$) |
| Utilities ¹ | Water | Authorized by Bylaw 38M2009 | 912 | 1,037 | 1,092 |
| | Sanitary Sewer | | 912 | 1,037 | 1,092 |
| | Total Levy for Utilities | | 1,824 | 2,074 | 2,184 |
| Transit ² | Buses | Development Permit Conditions (LPT2007-18) | 272 | 278 | 278 |
| Fire ² | Station and Land | | 75 | 85 | 90 |
| Police ² | Station and Land | | 50 | 57 | 60 |
| Recreation ² | Facility and Land | | 400 | 455 | 479 |
| Library ² | My Branch Portion | | 333 | 379 | 399 |
| Total Levy for Community Services | | | 1,130 | 1,254 | 1,306 |
| Transportation ² | Pedestrian Overpasses | Development Permit Conditions (LPT2007-18) | 500 | 569 | 600 |
| | Bikeways/Sidewalks | | 35 | 40 | 42 |
| | Total Levy for Transportation | | 535 | 609 | 642 |
| Parks ² | Local Park Upgrading | Development Permit Conditions (LPT2007-18) | 39 | 44 | 47 |
| | Regional Park & Pathway Upgrading | | 183 | 208 | 219 |
| | Total Levy for Parks | | 222 | 252 | 266 |
| Roads (Greenways) ² | 13 Avenue Greenway | Development Permit Conditions (LPT2007-18) | 260 | 296 | 312 |
| | Total Levy for Roads (Greenways) | | 260 | 296 | 312 |
| Total (\$/metre) | | | 3,971 | 4,485 | 4,710 |

¹ Funds for Utilities are collected through authorization of Bylaw 38M2009.

² Funds for Community Services, Transportation, Parks, and Greenways are collected through Council resolution in report LPT2007-18. These rates were last adjusted by Council in 2010 through report LPT2010-03.

Overview

Centre City Levies are one of several tools used by The City to fund growth related infrastructure. Because levies are collected incrementally as development occurs, it can take several years to accumulate sufficient funds to deliver major capital projects.

To ensure that priority projects can proceed as needed, infrastructure identified in the Centre City Levy Bylaw may be temporarily funded through other sources such as property tax, utility rates, or cost sharing arrangements with other levels of government. Levy funds are then used over time to reimburse these investments, helping to maintain a positive balance in the Centre City Levy accounts at year end.

In 2025, \$1.9 million of Centre City Levy funds were used to support eligible infrastructure programs within the Centre City Plan Area. At the end of 2025, the total Centre City Levy fund balance was \$13 million. The remaining balance will be used to support new and ongoing infrastructure projects in the Centre City Plan Area. More details on the levies collected and spent are shown in Figures B and C. The rest of this report includes summary pages and appendices with project-specific details.

Table 3 reconciles the Centre City Levy balance with The City's [Annual Financial Report](#) (AC2026-0181) (the "financial statements"). Differences are due to the financial reporting standards used in The City's financial statements and how this report presents the data (see Note 4 for details).

Table 2: Centre City Levy Balance Collected and Spent

| | | |
|---|-----------|-------------------|
| Opening Balance as at January 1, 2025 | \$ | 12,434,571 |
| Centre City Levies Collected | | 1,821,943 |
| Investment Income Received | | 728,530 |
| Centre City Levies Spent | | (1,933,987) |
| Closing Balance as at December 31, 2025 | \$ | 13,051,057 |
| Committed Portion of Closing Balance ¹ | | 1,215,066 |
| Uncommitted Portion of Closing Balance ² | | 11,835,991 |
| Closing Balance as at December 31, 2025 | \$ | 13,051,057 |

¹ This portion is set aside for projects that Council has already approved.

² This portion is available for future projects as Council approves them.

Table 3: Centre City Levy Balance per Financial Statements

| | | |
|--|-----------|-------------------|
| Centre City Levy Balance Held as Capital Deposits ³ | \$ | 12,375,739 |
| Centre City Levies Paid by The City's Internal Business Units ⁴ | | 675,318 |
| Closing Balance as at December 31, 2025 | \$ | 13,051,057 |

³ The City of Calgary 2025 Annual Financial Report can be found [here](#). Refer to the Notes to the Consolidated Financial Statements, Note 12 Capital Deposits.

⁴ Levies are paid by The City when it develops land. In The City's financial statements, any internal transactions are excluded to adhere to financial reporting standards used by the financial statements. For the purposes of this report, levies paid internally by The City have been included.

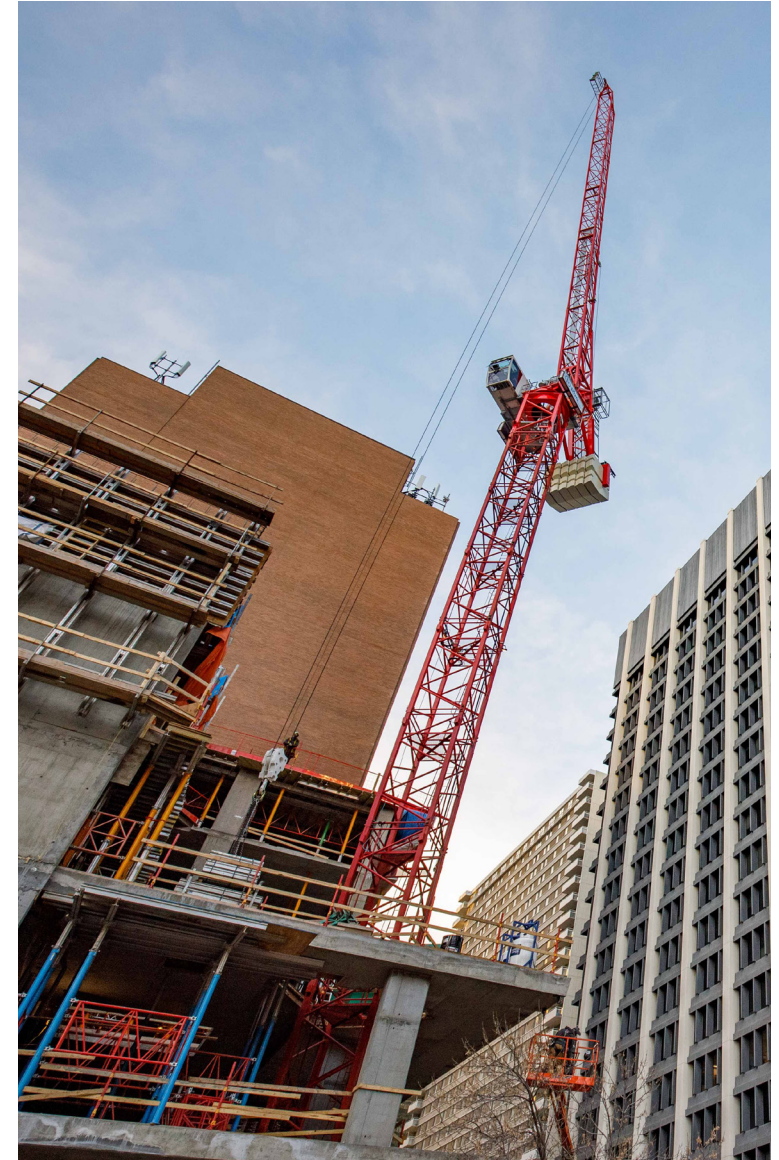
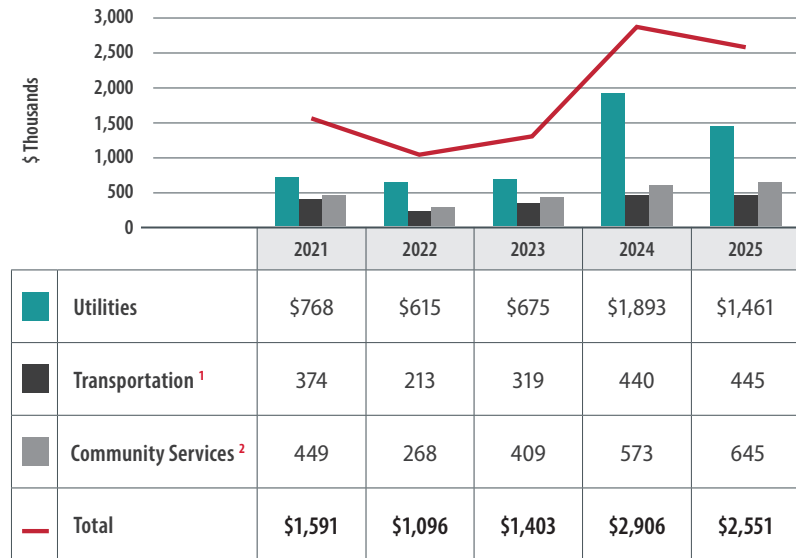


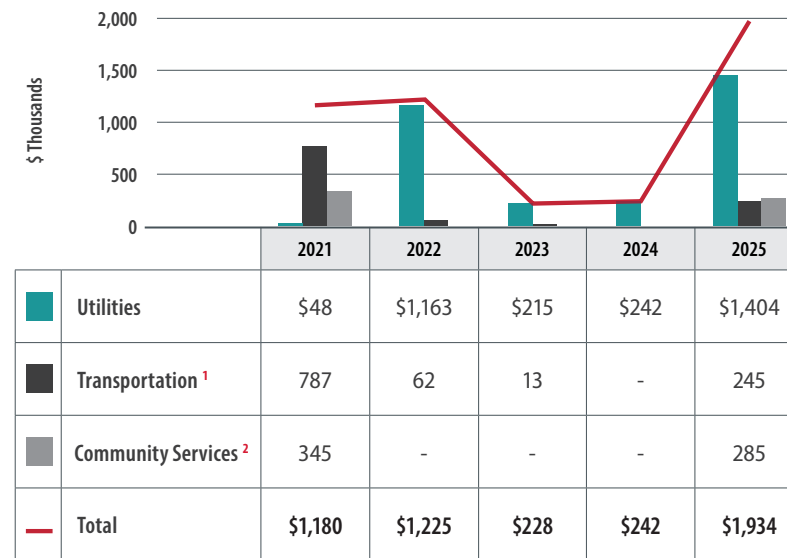
Figure B: Total Centre City Levies Collected and Investment Income Earned



¹Transportation category includes Transit, Transportation, and Roads (Greenways) infrastructure types.

²Community Services category includes Fire, Police, Recreation, Library, and Parks infrastructure types.

Figure C: Total Centre City Levies Spent



A detailed breakdown of the Centre City Levies collected, investment income, spent and closing balances are included in Table 4.

Table 4: Centre City Levies 2025 Summary by Infrastructure Type

| Infrastructure Type | Opening Balance January 1 (\$) | Collected ¹ (\$) | Investment Income (\$) | Spent (\$) | Closing Balance December 31 (\$) | Committed Portion of Closing Balance ² (\$) | Uncommitted Portion of Closing Balance ³ (\$) |
|---------------------|--------------------------------------|--------------------------------|---------------------------|--------------------|--|--|--|
| Transit | 910,397 | 68,533 | 62,305 | - | 1,041,235 | 910,396 | 130,839 |
| Transportation | 368,299 | 158,266 | 23,507 | (245,402) | 304,670 | 304,670 | - |
| Roads (Greenways) | 802,039 | 76,914 | 55,136 | - | 934,089 | - | 934,089 |
| Utilities | 5,545,219 | 1,199,234 | 261,939 | (1,403,585) | 5,602,807 | - | 5,602,807 |
| Fire | 397,197 | 22,187 | 27,068 | - | 446,452 | - | 446,452 |
| Police | 487,238 | 14,791 | 33,362 | - | 535,391 | - | 535,391 |
| Recreation | 2,725,226 | 118,083 | 185,208 | - | 3,028,517 | - | 3,028,517 |
| Library | 960,493 | 98,361 | 66,123 | - | 1,124,977 | - | 1,124,977 |
| Parks | 238,463 | 65,574 | 13,882 | (285,000) | 32,919 | - | 32,919 |
| Totals | 12,434,571 | 1,821,943 | 728,530 | (1,933,987) | 13,051,057 | 1,215,066 | 11,835,991 |

¹ Please refer to Appendix 1 for a listing of contributors to the Centre City Levy in 2025.

² This portion is set aside for projects that Council has already approved. The remaining levy budget to complete is listed for each project at the detailed project schedules at Schedules A, B and C.

³ This portion is available for future projects as Council approves them.

Schedule A – Transportation Centre City Levy 2025 Summary

Table 5 shows the project details and amounts of the Centre City Levy spent for Roads, Transit, and Transportation as at December 31, 2025.

| Table 5: Transportation Centre City Levy 2025 Summary | | | | | Funding Allocation per Council-Approved Budget | | | | | Actual Spent to Date | | | | Current Year | Remaining Budget to Complete | | | | |
|---|-----------------------|--|---|--------------------------|--|-------------------|------------------------|-------------|-------------------|----------------------|--------------------------------|---------------------------|------------|---------------------|----------------------------------|-----------------------------------|-----------------------|-------------|------------------------|
| Infrastructure Type | Project / Program (#) | Project Name | Project Description | Estimated Start/End Date | Centre City Levy Portion of Budget | | City Portion of Budget | | | Total Project Budget | Centre City Levy Spent to Date | City Contribution to Date | | Total Project Spend | Centre City Levies Spent in 2025 | Centre City Levy Cost to Complete | City Cost to Complete | | Total Cost to Complete |
| | | | | | (\$) | % of Total Budget | Grants (\$) | Other (\$) | % of Total Budget | (\$) | (\$) | Grants (\$) | Other (\$) | (\$) | (\$) | (\$) | (\$) | Grants (\$) | Other (\$) |
| Roads (Greenways) | 127-140 | 13 Avenue Greenway | 20 Block Separated Pedestrian and Multi-use Pathway | Complete (2009 to 2019) | 1,318,930 | 13% | 4,766,453 | 3,712,732 | 87% | 9,798,115 | 1,318,930 | 4,766,453 | 3,712,732 | 9,798,115 | - | - | - | - | - |
| Transit | 665-02W | Big Buses / Community Shuttle Buses | Purchase of Buses & Shuttles ¹ | Ongoing (Indefinite) | 2,051,396 | 0.2% | 842,445,795 | 301,507,782 | 100% | 1,146,004,974 | 1,141,000 | 462,721,145 | 56,190,337 | 520,052,482 | - | 910,396 | 379,724,650 | 245,317,445 | 625,952,491 |
| Transportation | 126-103 | City Wide Active Modes Program | City Wide Active Modes Program | Ongoing (Indefinite) | 151,000 | 2% | 5,532,567 | 363,060 | 98% | 6,046,627 | 151,000 | 5,532,567 | 363,060 | 6,046,627 | - | - | - | - | - |
| | 223-000 | 8 Street Corridor Phase 1 | Design and construction of pedestrian underpass enhancements including construction of new sidewalks, concrete surfaces, etc. | Complete (2013 to 2020) | 604,299 | 7% | 6,936,221 | 1,302,962 | 93% | 8,843,482 | 604,299 | 6,936,221 | 1,302,962 | 8,843,482 | - | - | - | - | - |
| | 223-000 | Pedestrian Overpass St. Patrick's Bridge | St. Patrick's Bridge | Complete (2009 to 2010) | 161,657 | 34% | - | 318,563 | 66% | 480,221 | 161,657 | - | 318,563 | 480,221 | - | - | - | - | - |
| | 223-007 | Pedestrian Overpass Bow River | Peace Bridge | Complete (2009 to 2017) | 243,214 | 1% | 24,048,450 | 708,336 | 99% | 25,000,000 | 243,214 | 24,048,450 | 708,336 | 25,000,000 | - | - | - | - | - |
| | 569-001 | Centre City Mobility Program | Pedestrian Overpasses / Centre City Mobility, Traffic Control | Ongoing (Indefinite) | 10,556 | 72% | 4,190 | - | 28% | 14,745 | 10,556 | 4,190 | - | 14,745 | - | - | - | - | - |
| | 569-001 | Downtown West Promenade | The project will extend the existing River District, Eau Claire improvements and 8th Street SW project to complete the River Promenade. Generally, the project will begin at 10th Street SW, extending to 14th Street SW and includes the spaces adjacent the Bow River to Bow Trail. | 2022 to 2029 | 925,509 | 40% | 112,227 | 1,282,114 | 60% | 2,319,850 | 245,154 | 112,434 | 805,759 | 1,163,346 | 245,154 | 680,355 | (207) | 476,355 | 1,156,504 |

Note: Totals may not add due to rounding.

Continued on next page

¹ This is a citywide program therefore the City Portion of Budget reflects the citywide budget; the Centre City Levy Portion of Budget is only for buses purchased for growth in the Centre City Plan Area. Additionally, this program's capital budget includes \$490 Million for the Electric Bus Program which is not related to growth.

Table 5: Transportation Centre City Levy 2025 Summary – continued

| Infrastructure Type | Project / Program (#) | Project Name | Project Description | Estimated Start/End Date | Funding Allocation per Council-Approved Budget | | | | | Actual Spent to Date | | | | Current Year | Remaining Budget to Complete | | | | |
|---------------------|-----------------------|--|---|--------------------------|--|-------------------|------------------------|--------------------|-------------------|----------------------|--------------------------------|---------------------------|-------------------|---------------------|----------------------------------|-----------------------------------|-----------------------|--------------------|------------------------|
| | | | | | Centre City Levy Portion of Budget | | City Portion of Budget | | | Total Project Budget | Centre City Levy Spent to Date | City Contribution to Date | | Total Project Spend | Centre City Levies Spent in 2025 | Centre City Levy Cost to Complete | City Cost to Complete | | Total Cost to Complete |
| | | | | | (\$) | % of Total Budget | Grants (\$) | Other (\$) | % of Total Budget | (\$) | (\$) | Grants (\$) | Other (\$) | (\$) | (\$) | (\$) | Grants (\$) | Other (\$) | (\$) |
| Transportation | 569-001 | 5 Street SW Underpass | Direct North-South connection between the communities of Beltline and Downtown Calgary. | Complete (2019 to 2024) | 853,188 | 23% | 1,254,829 | 1,675,260 | 77% | 3,783,278 | 853,188 | 1,254,829 | 1,675,260 | 3,783,278 | - | - | - | - | - |
| | 569-001 | Cycle Track Project | Signal timing adjustments; improvements to network along 12 Avenue and 8 Avenue | Complete (2017 to 2024) | 50,434 | 5% | 506,569 | 406,292 | 95% | 963,295 | 50,434 | 506,569 | 406,292 | 963,295 | - | - | - | - | - |
| | 569-001 | 4 Street SW Underpass | Prominent crosswalks, additional bike rack, increased number of on-street parking spaces and new tree planting | Complete (2016 to 2022) | 990,773 | 12% | 4,929,754 | 2,518,162 | 88% | 8,438,690 | 990,773 | 4,929,754 | 2,518,162 | 8,438,690 | - | - | - | - | - |
| | 569-001 | 8 Street Master Plan | Detailed designed for the 8 Street underpass to improve the pedestrian realm | Complete (2017 to 2020) | 19,733 | 100% | - | - | 0% | 19,733 | 19,733 | - | - | 19,733 | - | - | - | - | - |
| | 569-001 | 17 Avenue SW Public Realm Improvements | Improving crosswalks and intersections for those pedestrians, including curb extensions on side streets | Complete (2017 to 2020) | 84,811 | 2% | 4,161,088 | 53,304 | 98% | 4,299,203 | 84,811 | 4,161,088 | 53,304 | 4,299,203 | - | - | - | - | - |
| | 569-001 | 1 Street SW Corridor | Streetscape improvements for pedestrians including sidewalks and prominent crosswalks | Complete (2016 to 2020) | 170,349 | 4% | 4,534,820 | 51,627 | 96% | 4,756,796 | 170,349 | 4,534,820 | 51,627 | 4,756,796 | - | - | - | - | - |
| | 569-001 | Thomson Family Park | Components of new public park (Thomson Family Park) in Beltline | Complete (2016) | 2,131 | 2% | 357 | 98,362 | 98% | 100,851 | 2,131 | 357 | 98,362 | 100,851 | - | - | - | - | - |
| | 569-001 | 1 Street SW Underpass Project | Enhancement with new lighting, new sidewalks, new guardrails, placemaking elements, entranceway marquees, in sidewalk quadrant lighting, etc. | Complete (2015 to 2016) | 524,015 | 12% | 2,124,789 | 1,799,000 | 88% | 4,447,804 | 524,015 | 2,124,789 | 1,799,000 | 4,447,804 | - | - | - | - | - |
| | 569-001 | Complete Street Corridors | Construction of Cycle Track to facilitate safe and efficient cyclist movement through the City's core. | 2025 | - | 0% | 9,880 | - | 100% | 9,880 | 248 | 9,673 | - | 9,921 | 248 | (248) | 207 | - | (41) |
| Total | | | | | 8,161,997 | 1% | 901,367,990 | 315,797,557 | 99% | 1,225,327,543 | 6,571,493 | 521,643,340 | 70,003,756 | 598,218,589 | 245,401 | 1,590,504 | 379,724,650 | 245,793,801 | 627,108,954 |

Note: Totals may not add due to rounding.

Schedule B – Water Centre City Levy 2025 Summary

Table 6 shows the program details and amounts of the Centre City Levy spent for Utilities as at December 31, 2025.

Table 6: Water Centre City Levy 2025 Summary

| Infrastructure Type | Project / Program (#) | Project Name | Project Description | Estimated Start/End Date | Funding Allocation per Council-Approved Budget | | | | | Actual Spent to Date | | | Current Year | Remaining Budget to Complete | | | | | |
|---------------------|-----------------------|------------------------------|---------------------|--------------------------|--|-------------------|------------------------|------------------|-------------------|----------------------|--------------------------------|---------------------------|------------------|------------------------------|----------------------------------|-----------------------------------|-----------------------|------------|------------------------|
| | | | | | Centre City Levy Portion of Budget | | City Portion of Budget | | | Total Project Budget | Centre City Levy Spent to Date | City Contribution to Date | | Total Project Spend | Centre City Levies Spent in 2025 | Centre City Levy Cost to Complete | City Cost to Complete | | Total Cost to Complete |
| | | | | | (\$) | % of Total Budget | Grants (\$) | Other (\$) | % of Total Budget | (\$) | (\$) | Grants (\$) | Other (\$) | (\$) | (\$) | (\$) | Grants (\$) | Other (\$) | (\$) |
| Water | 2013146 | Waterworks-Downtown Upgrades | Multiple Projects | Ongoing (Indefinite) | 10,107,318 | 89% | - | 1,253,043 | 11% | 11,360,361 | 10,107,318 | - | 1,253,043 | 11,360,361 | 1,400,839 | - | - | - | - |
| Sanitary | 2013147 | Wastewater-Downtown Upgrades | Multiple Projects | Ongoing (Indefinite) | 5,541,375 | 100% | - | - | 0% | 5,541,375 | 5,541,375 | - | - | 5,541,375 | 2,746 | - | - | - | - |
| Total | | | | | 15,648,693 | 93% | - | 1,253,043 | 7% | 16,901,736 | 15,648,693 | - | 1,253,043 | 16,901,736 | 1,403,585 | - | - | - | - |

Note: Totals may not add due to rounding.

Schedule C – Community Services Centre City Levy 2025 Summary

Table 7 shows the project details and amounts of the Centre City Levy spent for Fire, Library, Parks, Recreation and Police as at December 31, 2025.

| Table 7: Community Services Centre City Levy 2025 Summary | | | | | Funding Allocation per Council-Approved Budget | | | | | Actual Spent to Date | | | Current Year | Remaining Budget to Complete | | | | | |
|---|-----------------------|---|---|--------------------------|--|-------------------|------------------------|--------------------|-------------------|----------------------|--------------------------------|---------------------------|--------------------|------------------------------|----------------------------------|-----------------------------------|-----------------------|------------------|------------------------|
| Infrastructure Type | Project / Program (#) | Project Name | Project Description | Estimated Start/End Date | Centre City Levy Portion of Budget | | City Portion of Budget | | | Total Project Budget | Centre City Levy Spent to Date | City Contribution to Date | | Total Project Spend | Centre City Levies Spent in 2025 | Centre City Levy Cost to Complete | City Cost to Complete | | Total Cost to Complete |
| | | | | | (\$) | % of Total Budget | Grants (\$) | Other (\$) | % of Total Budget | (\$) | (\$) | Grants (\$) | Other (\$) | (\$) | (\$) | (\$) | (\$) | Grants (\$) | Other (\$) |
| Fire | 42 | Station #1 Upgrades | Station and Land | Complete (2011 to 2016) | 250,000 | 9% | 161,031 | 2,393,826 | 91% | 2,804,857 | 250,000 | 161,031 | 2,393,826 | 2,804,857 | - | - | - | - | - |
| Library | 479 | New Central Library | New landmark civic institution with multi-faceted spaces to serve a range of ages, activities and needs from growing communities like East Village, as well as all citizens of Calgary. | Complete (2012 to 2018) | 1,759,000 | 1% | - | 173,038,483 | 99% | 174,797,483 | 1,759,000 | - | 173,038,483 | 174,797,483 | - | - | - | - | - |
| Parks | 500 | Centre City Parks | Upgrades/enhancements to pedestrian environment in existing Centre City parks. | Ongoing (Indefinite) | 56,414 | 69% | - | 24,962 | 31% | 81,376 | 56,414 | - | 24,962 | 81,376 | - | - | - | - | - |
| | 500 | Century Gardens | A highly valued urban park in the centre of Calgary's bustling downtown and a recognized historic resource. | Complete (2007 to 2023) | 345,000 | 2% | - | 16,490,369 | 98% | 16,835,369 | 345,000 | - | 16,490,369 | 16,835,369 | - | - | - | - | - |
| | 500 | Beltline Park | Engagement, Design and the Construction of a small piece of Parks-owned land in the heart of the Beltline. | Complete (2019 to 2023) | 295,486 | 21% | - | 1,138,506 | 79% | 1,433,991 | 295,486 | - | 1,138,506 | 1,433,991 | - | - | - | - | - |
| | 500 | West Eau Claire Park | New public promenade, public space, and pathway, including new site furnishings, lighting and landscaping. | Complete (2017 to 2021) | 904,514 | 11% | 5,326,000 | 1,646,117 | 89% | 7,876,631 | 904,514 | 5,326,000 | 1,646,117 | 7,876,631 | - | - | - | - | - |
| | 500 | Cowboys Park Upgrades | Revitalize the park, making it a prime location for festivals and public gatherings and adding a new purpose-built event space. | Ongoing (2024 to TBD) | 285,000 | 4% | - | 6,077,317 | 96% | 6,362,317 | 285,000 | - | 3,893,865 | 4,178,865 | 285,000 | - | - | 2,183,452 | 2,183,452 |
| Recreation | 507 | Beltline Aquatic & Fitness Centre and Streetscape Frontage Improvements | Facility and Land | Complete (2015) | 873,663 | 100% | - | - | 0% | 873,663 | 873,663 | - | - | 873,663 | - | - | - | - | - |
| Total | | | | | 4,769,077 | 2% | 5,487,031 | 200,809,580 | 98% | 211,065,688 | 4,769,077 | 5,487,031 | 198,626,129 | 208,882,237 | 285,000 | - | - | 2,183,452 | 2,183,452 |

Note: Totals may not add due to rounding.

Appendix 1 – 2025 Centre City Levy Collection Details

Table 8: 2025 Centre City Levy Collection Details as required by the Municipal Government Act

| Developer Name | Infrastructure Type | | | | | | | | | | Grand Total (\$) |
|------------------------|---------------------|---------------------|---------------|---------------------------|------------------------|---------------|---------------|-----------------|---------------|---------------|------------------|
| | Transit (\$) | Transportation (\$) | Roads (\$) | Utilities - Sanitary (\$) | Utilities - Water (\$) | Fire (\$) | Police (\$) | Recreation (\$) | Library (\$) | Parks (\$) | |
| External Contributor 1 | 4,240 | 9,791 | 4,758 | 16,653 | 16,653 | 1,373 | 915 | 7,305 | 6,085 | 4,057 | 71,828 |
| External Contributor 2 | 11,287 | 26,065 | 12,667 | 44,335 | 44,335 | 3,654 | 2,436 | 19,447 | 16,199 | 10,800 | 191,226 |
| External Contributor 3 | 21,206 | 48,972 | 23,799 | 83,298 | 83,298 | 6,865 | 4,577 | 36,538 | 30,436 | 20,290 | 359,279 |
| External Contributor 4 | 31,800 | 73,438 | 35,690 | 124,914 | 124,914 | 10,295 | 6,863 | 54,793 | 45,642 | 30,428 | 538,777 |
| External Contributor 5 | - | - | - | 330,417 | 330,417 | - | - | - | - | - | 660,834 |
| Total | 68,533 | 158,266 | 76,914 | 599,617 | 599,617 | 22,187 | 14,791 | 118,083 | 98,361 | 65,574 | 1,821,943 |

Note: Totals may not add due to rounding.