

Appendix A

Record of Comments

Meeting Notes

Meeting Subject / No.: Stakeholder Workshop #1 – Internal Stakeholders (morning session)

Date of Meeting: August 20, 2014 **Location:** Municipal Building, Floor 9, Pacific Ave (Mun09-G64-20)

Meeting Facilitator: O2 Planning + Design Inc.

Project Name: West Eau Claire Park + Public Realm Plan

Attendees:

O2 Planning + Design
City of Calgary - Centre City
City of Calgary – Planning, Development and Assessment
City of Calgary – Customer Service & Communications
City of Calgary – Corporate Properties & Buildings
City of Calgary – Calgary Parking Authority
City of Calgary – Transportation Planning
Calgary Fire Department – Tech Services
Calgary Police Service
City of Calgary – Ward 8 Councillor
City of Calgary – Parks
City of Calgary – Community & Neighbourhood Services
City of Calgary – Public Art Program
City of Calgary - Ward 7 Office

Topic		Notes
1	Emergency Access Boat Launch	<ul style="list-style-type: none"> Security gate would be required and located at road entrance (not needed at ramp) Need to balance pedestrian access with emergency response requirements

Topic		Notes
		<ul style="list-style-type: none"> • 6m wide access required with ability to withstand approximately 85,000 lbs load (Calgary Fire Department – Technical Services could provide more detailed information on specific requirements) • Currently acts as a public node (views to Peace Bridge, people bike and sit, dipping your feet in the water, informal public boat launch) • Boat launch operators do not want vehicle access (do not want an associated parking lot) • If this becomes a major public node, there will be issues when an emergency ensues and public needs to be moved to access river • Observation platforms adjacent to boat launch could offer views of Peace Bridge and allow users to overlook when emergency response is using the boat launch • General emergency access use along pathway system • Maintenance of boat launch should be considered • Keeping/making it attractive so it blends in with adjacent use yet retains full functionality
2	Helipad	<ul style="list-style-type: none"> • S.T.A.R.S. is the primary user group along with private use • Helipad is crown land and under federal regulation • Who maintains Helipad landscape? • Helipad is going to stay – safety requirements need to be respected (site elements within the helipad flight zone cannot be tall (refer to standards))
3	Contextual Relationships	<ul style="list-style-type: none"> • Consideration as a link between East Village and West Village • Scope extension and consideration of river frontage between 10th and 14th Street (as this would connect to West Village) • West Eau Claire is a regional park attraction, commuter route and local park. Balancing these needs will be quintessential to the success of the park. • Peace Bridge is a tourist landmark and draws visitors from Calgary and beyond to the park • The Concord development is a large private usage, threshold between public and private will need to be considered. Most likely blocked off to public use. • 8th Street Corridor Study has already considered the extension of 8th Street to the riverfront. Their investigation and corridor design should be considered when designing the interface between the two projects. Balance is important between both projects. • 8th Street Corridor Study has proposed a monolith at the terminus near the river. This is part of a set, matching the terminus of the corridor at 17th Avenue. The monolith design is quite dramatic. The design should be reviewed to keep the intent, but with a better integration with the natural edge. • There is a need for a balance between regional and community needs. • Thousands of new residents will be living in the area based on the new developments proposed. Therefore, local community use of the park has to be considered in addition to regional and commuter users. • Very interesting ecological and natural area juxtaposed against the linearity of the grid street network

Topic		Notes
4	Ecological / Riparian Area	<ul style="list-style-type: none"> Natural surveillance would improve safety along riparian zone (ensuring sightlines from adjacent path into the area) Riparian zone is accessed from both sides; pedestrian as well as rafters using the area as a stopover Soft edge is a juxtaposition against the hard north rip-rap edge Riparian areas should be protected, enhanced, and managed Important that the park is kept green, flexible and should not be overly formalized with hardscape
5	Site Elements	<ul style="list-style-type: none"> Existing site elements should be considered from a safety perspective 20 minute bench on Stephen Avenue is angled to make sitting for longer than 20 minutes uncomfortable Leasing of park space for commercial uses (i.e. River Café, Boxwood, seasonal kiosks) could be explored
6	Pedestrian and Cyclist Integration	<ul style="list-style-type: none"> Possible to obtain collision records reported along pathway? A major consideration to project success will be how cyclists and pedestrians will both use the space effectively and safely Important not to only consider the commuter in design as many current residents and thousands of new residents will be using the park as well Should we be trying to separate pathway users (running, walking, rollerblading, cycling)? Time of day is important for pedestrian and cyclist integration (Morning commute, lunch time park use, evening commute and evening use) Public realm and commuter balance
7	Cycling Strategy	<ul style="list-style-type: none"> Cycle tracks should relieve bicycle congestion along riverfront. Though, may not be the case as the riverfront pathways have no traffic lights and offer scenic views. Research cycle track pilot program (5th, 7th and 8th Street) Visibility issues at 7th Street bikeway gateway Maintain or improve 7th Street cycle track connections Connectivity to 5th Street cycle track Connection from Peace Bridge to main path should be improved, currently it is too narrow
8	Land Use	<ul style="list-style-type: none"> Some areas are municipally owned, some are crowned land. Important to know which areas are municipally owned when considering potential future uses.
9	Semi-Public Spaces	<ul style="list-style-type: none"> Most of the semi-public open spaces are residential frontages and are not perceived as public spaces. Is it possible to make them feel more public? Could circulation (pedestrian or cyclists) be introduced into these areas to alleviate congestion along major thoroughfare?

Topic		Notes
10	Community Gardens	<ul style="list-style-type: none"> Should a community garden be encouraged in the area? Perhaps in areas too small to be programmed. Re-imagining what a community garden can be. East Village is planning to create a community garden in a vital junction (by St.Patrick's Island).
11	Stormwater Management	<ul style="list-style-type: none"> Investigate how stormwater management can be integrated into design
12	Seasonality	<ul style="list-style-type: none"> Consideration of winter use is important
13	Night Use	<ul style="list-style-type: none"> Night time use should be considered (Peace Bridge is light up at night and is a landmark during the night and day) Ensure safety during night (sufficient lighting)
14	Expectations	<ul style="list-style-type: none"> Realistic in design approach Transparency of scope Do not promise public a number of amenities and then have to cut these out when budget concerns are addressed
15	Public Art	<ul style="list-style-type: none"> Existing public art pieces can be moved if there is a good reason to do so There is currently no concrete public art piece projected for the area Opportunities for new public art location should be identified in the plan, such as the gateways
16	Safety	<ul style="list-style-type: none"> Commuter and public realm user integration Sightlines, lighting and benches Site elements and infrastructure should consider skateboarders and parkour activities Noise with associated programmed areas and events has been a concern in the past for nearby residents
17	Vision	<p>[What is the overall purpose of the project (in four words or less)?]</p> <ul style="list-style-type: none"> No consideration for safety in the draft vision presented West Eau Claire Park is a linkage between East and West Village. Spaces should not compete with these activity nodes or with Eau Claire Plaza. If there are too many plazas or large gathering areas, the potential of the whole waterfront is diluted. Need to create a series of appropriate sized public spaces. Walking and pause moments Staging of the project at construction will be important to maintain pedestrian and cycling connectivity

Meeting Notes

Meeting Subject / No.: Stakeholder Workshop #1 – External Stakeholders (afternoon session)

Date of Meeting: August 20, 2014 **Location:** Municipal Building, Floor 9, Pacific Ave (Mun09-G64-20)

Meeting Facilitator: O2 Planning + Design Inc.

Project Name: West Eau Claire Park + Public Realm Plan

Attendees:
Company/Organization

O2 Planning + Design
City of Calgary - Centre City
City of Calgary – Planning, Development and Assessment
City of Calgary – Customer Service & Communications
Bike Calgary
ECCA (Eau Claire Community Association)
Eau Claire YMCA

Topic		Notes
1	Contextual relationships	<ul style="list-style-type: none"> Question was asked: how many residential units are expected with new development? Park needs to balance between regional and local requirements 6th street gateway is vital as a connection to Eau Claire Mixed Use Redevelopment
2	Pedestrian and Cyclist Integration	<ul style="list-style-type: none"> Separation between “fast” and “slower” users. Cycling, rollerblading and running can all use one separated path while walking can use another Work with cycle track pilot program to find detours or alternative during congestion in the promenade section of pathway Promenade is narrow and heavily used by cyclists, pedestrians, runners and rollerbladers Cannot only consider commuters but also public realm users
3	Cycling Strategy	<ul style="list-style-type: none"> Wayfinding, gateways and connectivity are the major considerations 7th street bikeway gateway has visibility and sightline issues 7th street bikeway gateway has awkward 45 degree angle turn which is not safe Connecting 6th Street gateway with future 5th Street cycle track will be a major cyclist desire line as 5th street leads to underpass

Topic		Notes
		<ul style="list-style-type: none"> • The 5th Street cycle track will end between 3rd and 4th Avenue • 3rd Avenue is a natural bicycle boulevard (but not marked or signed) • Consider sightlines for cyclists • Use the existing pathway edges for separated bike lanes (already marked with different concrete colour) • Explore flexibility in bike lane standards on this site • Redefine gateways/connections (corner plazas similar to Eau Claire at 1st Street SW) • Create landing space at 7th Street and reinforce pathway launch to 8th Street • Pathway circling helipad • Dual/twin pathways to separate pedestrian and cyclists should be explored • Separate uses on the existing promenade as promenade is wide? • Potential to use back alley between 2nd and 3rd avenue as cycling connection?
	Park use and function	<ul style="list-style-type: none"> • West Eau Claire Park is used extensively for runners (even in winter season) as it is plowed regularly • Running loops and connection between the Eau Claire and Kensington Running Rooms • Unofficial use by organizations (Bootcamps, daycamps, outdoor fitness, etc.) • YMCA runs day camps in the area and on Prince's Island Park • Commercial use in the park should be explored (kiosks, coffee, newsstand etc.) • Marathon users train on asphalt • Time of day uses needs to be considered • Outdoor fitness and physical activity (Fitness park in Canmore is a good example) • Peace Bridge is used as a destination/meeting point for many park users
	Precedents	<ul style="list-style-type: none"> • Bilbao Promenade by Calatrava
	Vision	<ul style="list-style-type: none"> • World-class public realm • Contemplative park space which rejuvenates users. Much needed as many activity zones adjacent to this park space (East Village, Eau Claire Market and Plaza and West Village) • A breath of fresh air in an urban landscape (refreshing) • Reflective atmosphere • Great green area. Importance of keeping it green as there isn't a lot of green in the area.
	Potential Diagrams Needed + Action Items	<ul style="list-style-type: none"> • Determine projected residential increase in the surrounding area to adeptly design for local park use • Determine relative seasonal events in the area such as running races, festivals, etc.

WHAT I LIKE ABOUT THE PARK

CIRCULATION AND ACCESSIBILITY

Peace Bridge
Big walking boulevard
Great Trails
Pathways
Wide pathway
Walkway
Wide walkway
Wide pathway
The Walkway
walkway
Easy Access into Kensington
Pathways
Easy to Access
Close to downtown
Wide open Pathways along the river and Peace Bridge
Wide pathway
The Peace Bridge
Pathways by the River

Pathways
Paths
Walkways by the water
walkway/runway - close to downtown
Great Trails - keep adding more bike trails - make it the bike
pathway epicenter
Proximity to downtown - beautiful bike paths

VEGETATION AND OPEN SPACE

The Flower hanging baskets
Flower hanging baskets
River
How the river looks untouched
The Trees
Views
Not over crowded
Nature
Natural beauty
Opportunity to be in Nature so close to down town
Green Space
The River
Hanging flower baskets
The natural space
The trees
Green areas
The green space
Natural settings

plants
Green areas
The River
Nature close to downtown

The open green space
Green space
The River
Natural Environment

Connection to Nature
The Trees
Green space, Wide open
Flower hanging baskets
River

WHAT I LIKE ABOUT THE PARK

CIRCULATION AND ACCESSIBILITY

VEGETATION AND OPEN SPACE

Green space
The Water
Open Space
Greenery
Flowers
Trees
Mature Trees
Waterway
Green space away from urban noise
Keep it green
More trees
Trees, grass, flowers
I love huge green area in the inner city that everyone can use
Beautiful flowers
Keep green and clean
Leave as a nice field for impromptu games of soccer or cricket
Lots of flowers
Trees, Natural Environment

WHAT I LIKE ABOUT THE PARK

AMENITIES	SAFETY AND MAINTENANCE	OTHERS
The deck	Safe	Beautiful
Lamp Posts	Safe	Peaceful
Public Washrooms at East End	safe	Peaceful
Kids Park	Safe and well lit	Beautiful
benches	Clean	Scenery
MINIMIZE DEVELOPMENT	Clean	Peacefulness
Maintain green space	Clean	Quite
Keep it natural		Respectful
Keep it green and natural		Peaceful
Keep the green space for recreation		Diversity of People
Keep the Trees		Nice
Keep it mostly the same		Beautiful
Keep it green		Clean all year round!
Leave it the same		Beautiful
Keep the Trees		The space is wonderful
No more development		Its pretty
No more condos		Gives peace to the people
No more condos-keep it green!		
The amount of parkland - there should be no sale or trading of even an inch of parkland to facilitate any future development		
No more condos		
No more condos - keep it for the people to breathe and relax		
No more development		
Leave it as it is - prevent 'improvement' like East side of center St. for example - barren and boring		
Almost everything is perfect - don't change too much		
COMMERCIAL		
No commercialization		
No commercialization on a big scale - smallish beautiful i.e. like Joe's bike garage compliments the space & activities in it		
Commercial development should be encouraged		
No retail, no commercial		
ART		
The Art		

WHAT I LIKE ABOUT THE PARK

AMENITIES

Consistency of the design

EVENTS

A great place for all cultural events

SAFETY AND MAINTENANCE

OTHERS

I WISH THE PARK...

CIRCULATION AND ACCESSIBILITY

Separate bike path from foot path
Separate bike path from foot path
More Pathways
Separate bike lane from pedestrians
Wider paths coming off of Peace Bridge South
Continue the wide paths from Inglewood Bird Sanctuary to Edworthy

Walkway and bike paths separate

Repair the access for wheel chairs onto the Peace Bridge
Separate the bike paths from people
Speed bumps to slow cyclists
Separate the bikers from the runners
Separate paths from cyclist
Separate bike path from foot path
Separate bike path from foot path

More and affordable parking
More bike lanes

Separate bike path

Build a crosswalk at the Peace Bridge and Memorial Drive
Slow down traffic through picnic zone
Separate bike Traffic
Separate bike path
Separate paths from cyclists
Wide well lit pathways
Separate the bikers from the runners
Access to East Village along the River, loop the Zoo, to Mission
Develop walking trail along the river in the trees
Separate pedestrian and cycling lanes

VEGETATION AND OPEN SPACE

Expand the Park Space on the West End
More green space
Keep the green space
More trees
Public Gathering Space

More space for having a BBQ

No more hard surfaces

Natural green space
Natural children's play space
Learning Environments
Gathering Space
More Trees
More Flowers
More green space

Maintain the green tranquility
Clean and refreshing

Dog park

Keep a natural area
More flowers and plants
Keep the green space
Continue to be natural and Green
Support the eco-system
More trees
Less Geese
Performance Space
Protect all existing parkland
More trees

I WISH THE PARK...

CIRCULATION AND ACCESSIBILITY

More sidewalk
Had no cyclists
Separate the cyclists from the pedestrians
Separate bike and pedestrian lanes
lunch time more conflict on pathways
pathway along riparian area for pedestrian only

VEGETATION AND OPEN SPACE

More trees
More trees
Keep it Natural - Protect it
Dance place
More beaches to play in the summer
More beaches
More greenery
More beaches
More green space
Keep it Natural and green
More Trees
More Trees
More Trees and green
Green Space - Make it Calgary's version of Stanley Park
More Trees and Green space
Play area close to Peace Bridge
A gathering space to support a sense of Belonging
Keep it natural
A park
Gardens
Expand the park to the nearby parking lots
more Trees
Keep everything as natural as much as possible
A lot of green grass in the park - and no cars
A lot of flowers and plants
Community garden
More flowers
Keep open space for soccer games
Better use of the the grassy area - create a community garden
lost of flowers, lots of grass and trees
Landscaping at the South end of the Peace Bridge - rock garden
and trees
Community garden
Community gardens

I WISH THE PARK...

CIRCULATION AND ACCESSIBILITY

VEGETATION AND OPEN SPACE

Thin trees so you can see lagoon/river from path

Get ride of shrubs and put more cobble stone and more flower baskets

Something similar to High Line in New York

More flower beds like Riley Park - place to sit and enjoy our short summer

Community Garden

Clean up the trees off river bank after flooding

I WISH THE PARK...

AMENITIES	SAFETY AND MAINTENANCE	OTHERS
Children's Playground	More Police Patrol	Community Spirit
Fitness Park	Surveillance Cameras	
Swimming Pool	Smoke Free Area	
Children's Playground	Felt Safer in the evening	
Fitness Park	Security	
Fitness Park	Put up signage for cyclists to use their bell	
	Make 4th Ave fly over safer - clean up drugs and crime	
New pavement for cracked paths	More signage describing the runner - biker etiquette	
	More security	
Drinkable water fountains	Police Patrols	
Swimming Pool	Good security lighting/patrols	
Fire Pits	Enforce 20 km/hr speed limit	
Outdoor Fitness Equipment	Bikers need to be patrolled for going too fast	
Adult Playground	Less homeless people	
Basketball Courts	View obstructed at intersection of regional pathway and pathway coming from peace bridge	
Seating	Blind corner coming up under the LRT bridge	
	Intersection not safe (south east corner of helipad)	
Open Circuit Training Gym	Blind corner because of trees (south east corner of helipad)	
Adult Playground		
Volley ball courts		
Volley ball courts		
Kids playground		
Public Washrooms		
Moveable Patio Tables and Chairs		
Sheltered areas		
Outdoor Fitness Equipment		
Fountains		
Kids Swimming Pool		
Fountains along pathway		
Kids pool		

I WISH THE PARK...

AMENITIES

Water playground
Secure washrooms
More brightly light in the evening
Kids playground
Water fountains
Bathrooms
Bathrooms
More bathrooms
Outdoor exercise equipment
Outdoor obstacle course
Outside obstacle course
Outside training equipment
Outdoor Gym
Tennis Courts
Beach Volley Ball
Outdoor equipment
Water fountains
Beach Volley Ball
More Light Lamps
Washrooms
Water fountains
Safe Shelters
Washrooms
Children's Playground
Frisbee golf course
Adult playground
Bathrooms
Water fountains
Patio
Bathrooms

Add more evening lighting
Washrooms
More casual seating

SAFETY AND MAINTENANCE

OTHERS

I WISH THE PARK...

AMENITIES

SAFETY AND MAINTENANCE

OTHERS

Water fountain

Bathrooms

Children's Playground

Enhance children's water park

Children's Playground closer to Peace Bridge

Water fountains

Playground and more/cleaner bathrooms

Ice Rink

Basketball Courts

More water fountains and public washrooms

Drinking Fountain

Soccer

play grounds, pool

Water fountains, water features

Had More better public bathrooms

had more benches

Stages

Scooter/skate park

Outdoor urban gym/obstacle course

More water fountains and open washrooms

Giant chess boards

Public washrooms near Louise bridge

Play ground near the Peace Bridge

Water fountains

Well lit pathways

Children facilities

Designated fitness/training area

Area for skating rink

More pathway lighting

Playground

Had a user counter

More seating looking at city views

I WISH THE PARK...

AMENITIES

Keep open space flexible
Something to prevent ball to cross helipad fence
Playground equip for adults for circuit training - for seniors + lunch time workout

MINIMIZE DEVELOPMENT

No riverside condos
No more riverside condos
Reserve the park land around 838-2nd Ave
No more building developments
No more condos
Keep it public
No commercialization
Fewer obstructions to the view of the river between the Peace Bridge and LRT
No more buildings
No more condos
No more concrete
No More buildings
No more concrete and steel
No development by the water
No more construction
Would stay just as it already its
Protected from over development - need sustainability and long term thinking
No more construction
No more cheap glass low rent condos
Retain the beauty of this park, no more construction of additional buildings
This park is fine leave it alone
To stay as it is - no sale or adjustment of parkland to facilitate future developments - particularly west of the Peace Bridge
No development of buildings - keep it the way it is
Not as single scrap of parkland should be relinquished especially if it means facilitating any commercial development

SAFETY AND MAINTENANCE

OTHERS

I WISH THE PARK...

AMENITIES

Every small part of parkland must be retained
No more buildings
No more construction
lowering the height of the causeway to Prince's Island Park so that it
doesn't create the next flood of Sunnyside
Leave it as it is - it is beautiful
No More development - stop development!

COMMERCIAL

Coffee Shop
Restaurants and shops
More Cafes
More Café by the water
Outside Café
More coffee shops
Keep it Non-profit for people
More shops and restaurants
Little free Library
Bicycles to rent
More Riverside Cafes
Café
Kiosks for food along the river
Able to rent a bike
Better high end shops at the Plaza
Food Vendors
Food Trucks with ATM Source
Restaurant

Restaurants, patio or food trucks - Between Louise and Peace Bridge
Cafes and Restaurants
More food trucks
More vendors
Built in Farmers Market Stands
Programs and educational outreach
A Canadian coffee shop and an Australian coffee shop

SAFETY AND MAINTENANCE

OTHERS

I WISH THE PARK...

AMENITIES	SAFETY AND MAINTENANCE	OTHERS
ART Sculptures Art forms Sculptures More art Art installations Sculpture garden Digital tree lighting More art More sculptures by local artist More art work Outdoor art work and Sculptures Better public art Sculptured land marks More public artwork More sculptures Some art similar to the Stone sculptures on the South side of the River near 14th St Bridge		
EVENTS Street Performers Cultural Centre Cultural Facilities Weekly farmers market Space for entertainers Concert area on the river More Festivals Local Farmers Market Some Music Music Concerts Weekly farmers market Winter Carnival Flash Mob Cultural events More live music/buskers		

WHAT IS GOOD ABOUT WEST EAU CLAIRE PARK?

CIRCULATION AND ACCESSIBILITY	VEGETATION AND OPEN SPACE
Running and bike paths	Green Space
Peace Bridge	Lots of Trees
No Vehicles	Wild and tall grasses encouraging birds and butterflies
Walk along the river	Open space
Close to downtown	Natural Location
Pathways	Open, less crowded than Eau Claire Plaza
Peace Bridge	Beautiful landscaping, hanging flower pots
Peace Bridge has increased pedestrian traffic	Beautiful green space in a urban, inner city setting
Close to downtown	Hanging pots
Nice Pathway	Great Public area
Wonderful pathway to walk and bike	Natural
Pathway	The river, the green space
Peace Bridge is outstanding	public use, the appreciation of nature in the middle of the city (something Calgary doesn't value enough)
Excellent pathways	Green space
Nice wide promenade walkway	Open green space that is flexible and natural
Nice walking space - well lit and pretty long the river	An efficient greenway
The river, proximity of pathways to river	The combination of 'natural' and 'manufactured' space
Pathway snow clearing is well implemented	The open spaces (unlike the north side of river)
Peace Bridge	Open green space
Multi-use pathways	Natural environment, mature trees
Pedestrian bridges to access NW Calgary	Views of downtown, the river
Wide pathways	Trees - canopy
Peace bridge and surrounding area	Seasonal baskets/ lighting
Access to Princes Island	Surfing on the standing wave at the south point of Louise Bridge
Wide pathways allowing for multi-modal use.	Green Space
proximity to river	the flower baskets and lighting
Green space, restaurants, pathway, location!	Green space, close to river
Quiet, lot's of people and wide pathway to accommodate everyone	The park, the greenery, flowers, ducklings
The connection to the river, the pathway, the large trees.	Opportunities for people to get outside and enjoy nature
The wide pathways - easy to share amongst bikers, runners, families, etc.	Large amounts of green space
Beautiful area, lots of space for pedestrians.	Mature trees
pathways, river views	Lined with large, mature trees
Having a path along the river that's removed from from traffic and nicely landscaped. The path is wide, which makes it nice for mixed traffic (foot, cycle, etc.)	I like the open concept currently. There is space, shaded and un-shaded.
The pathway system, for both recreation and commuting.	Location, Shaded Areas
It provides both a good pedestrian/cycling artery into the Eau Claire centre and is also a relaxing place alongside the river	Very pleasant inner-city green space, sculpture and monument settings, promenade.
Great place to walk, I like how wide the main path is in this area.	Lots of tall, mature poplar trees.
River walk,	The tree lined path in between Eau Claire Market and the Peace Bridge.
Walking, running and cycling along the river is very enjoyable.	peaceful, beautiful.... lots of people love it by the number who are often there!
Green space for recreation, wide pathway for pedestrians and cycling	Natural setting, close getaway from the office tower.
Wide paths.	Green space, proximity to river.
Walking, Biking, Nature and pathways.	Green space
connectivity, wide pathway, river access	Trees and flora.

WHAT IS GOOD ABOUT WEST EAU CLAIRE PARK?

CIRCULATION AND ACCESSIBILITY	VEGETATION AND OPEN SPACE
Access to the river itself, connections to north side of the river, quiet area	Nicely landscaped
Pedestrian & bicycle friendly, good 'downtown' atmosphere with many people around.	Trees and shrubs
Public park, great walking pathway	Lots of trees, close to river, beautiful view
Simple access to the park from the north side of the river.	Love the trees and benches and general open green space, plus the ability to get close to the river.
It is a beautiful park close to the river and downtown.	excellent area to keep natural for pedestrians and other users
Beautiful access between downtown and Kensington, great place to run, or go for a walk	Green space along the river.
Pathways	Greenery / feels quieter than east & Eau Claire Market area
It's a nice path to walk on	The beautiful open park spaces.
The wide path	Lots of trees, adjacent to the river.
wide path, busy	Lots of trees
The pedestrian, running and cycling paths.	some tranquility in the centre of the city
The access from many different points (Memorial Drive, 9 St, 8 St, 1 Ave SW), and the amount of nature that is STILL a priority for residents	
close to river, downtown and pathway	Pathways, garden, the amazing trees and the view
River access, access to the island park, pathway system.	no commercialization, green spaces, mature trees
The walking paths that connect to the north side via the peace bridge.	The shade and trees between Jaipur and Peace bridge make this a beautiful area to walk, bike, run, explore.
walking trails	Green space
Access for cycling	The walking paths and the incredible job the parks people do each year with the flowers.
Walking paths	Lots of grassy areas to sit on; wide pathways
the wide pathway system from eau Claire to the peace bridge	the trees and hanging plant baskets. The coloured lights during the holidays.
Location and proximity to the river valley pathways	The green space. We need more of it.
Green space, access to river, pathway is wide enough to accommodate walkers/bikes/strollers.	Lots of nature, and it is very open.
Public access. The park area is pretty good already, I'd leave it alone.	The big trees afford shade and it is close to Prince's Island.
Wide pathway that allows for a variety of traffic types, easy access to Prince's Island park, mature trees near Eau Claire market area, easy access to Kensington.	a green space with comfortable surroundings
wide paths,	
you can bike or walk without worrying about vehicle traffic	Neat - clean - beautiful green space
I love the pathway, I bike and run so I use it often	portions have nice hanging baskets
peace bridge	the beautiful open space along the river
It is large enough to encompass cycling, walking, jogging and roller blading along the pathways.	green space
Access to downtown without having to wrestle with car traffic. Beautiful bridge.	Its amount of green space, the trees and bushes along the riverbank, the peace arch area.
Wide sidewalk/pathway from Princess Island to 10th St, , lots of usage at lunch and weekends	Spacious, room to do lots of activities, beautiful trees and flowers
The pathways are great for jogging.	Simply the amount of space there is available.
wide pathway attractive landscaping	Great feeling of nature in the city
the bike path, the connections with Princes Island Park and the Peace Bridge	large green space in the heart of the city
Nice paved pathways	Abundant green space and a peaceful atmosphere.
West Eau Claire is a great green space on the edge of downtown that provides access to the river. I used it every morning on my walk to work. It could be an even better space with a few improvements to its design (see below).	Nice natural setting in the inner city. Plenty of trees. An urban Oasis!
location - centrally located - high end real estate sitting around doing nothing!	Greenery, serenity, flowers, shrubbery, rest areas,
Pathway	
Bike paths, the bridges to access the other side of the river	Beautiful scenery
Connectivity to downtown from many communities	Lot's of space
Nice Pathway	Flower Baskets in the summer, cleared in the winter. Great place for tourists, residents and workers to congregate
Nice wide Promenade	Prince's Island Park is nearby, great central location
Wide pathways	Beautiful recreational space beside the river
Beautiful bike paths connecting Eau Claire with the East..	Nice flower displays
Downtown location makes it attractive	
It is a nice walking area	
Big pathways, the peace bridge, generally a very nice area	
Great pathways, close to downtown/Kensington	
The Pathways! Gets us away from the office/downtown	
Access to the river	
Pathways, connects 10th St. & Eau Claire	

WHAT IS GOOD ABOUT WEST EAU CLAIRE PARK?

CIRCULATION AND ACCESSIBILITY	VEGETATION AND OPEN SPACE
Access from bike path commuter routes along the river onto the downtown streets	its so very natural and green in the midcity its makes for wonderful walking watching ducks and geese people fishing or rafting down the river
Having the path so close to river	lovely quiet places to sit
Good access to center bike routes.	Beautiful area. The tree coverage along that stretch is fantastic.
The Peace Bridge	River, TREES!!
The river pathway system is a gem!	The fact that it is natural green space, by the river
Wide paths	Plenty of green space
The pathways and connections	The old trees
It is beside Prince's Island Park and Located at Downtown core	Vast expanses of grass, the natural trees and bushes which provide a buffer between the river and the bike path
Provides a footpath along the river and gives walkers easier access to the river downtown	Green space for people to run/walk/bike - love the open and teed area for just enjoying nature
Wide pathway	It's green and is an escape from the city in downtown area, I love it! skating in winter is best in Calgary!
Connected to downtown	Trees
Bike paths	It is a buffer from high rise and higher density development along the South shore.
The paths that are low-key	Green Space, it is an oasis in the middle of downtown. Really nice with the flower planters and trees
River walk is beautiful	River , Trees, public access. A great place within the city core that still feels open and alive
Connectivity along the river for pedestrians and bikes	It is an open space
Width of the promenade - crowds of people are attracted here	Hanging baskets, trees and some open space
The wide path in spots	A nice riverside
accessibility, walking paths, biking paths.	The park
Proximity to the Kensington area	Abundance of nature right next to downtown
Bike and pedestrian pathways	Green
It's the gateway to the North Side of the river to downtown Calgary - Calgary's prime riverfront park gives welcome to 10th Street Bridge,	I like all the trees, flowers and the amount of pedestrians
the LRT and the Peace Bridge to all who enter the city	Green space
walking, running, cycling along riverfront. pay as you can entertainment	The greenery, the park is one of Calgary's most socially vibrant areas
It is a perfect place for everyone to enjoy the beautiful river walk area in Calgary.	Lots of green space
The walking trails	The river and Price's Island Park
Pathways, bow river, bridges	Pretty riverside
Peace Bridge	River
Walking/running/biking paths	Green space
Mix of uses, good running/walking paths	Its fairly natural state
Proximity to river is great	It's a great 'escape' into a somewhat natural environment right on the doorstep of Downtown Calgary.
Heavily used because it has greater separation from roads, but easy access to neighborhoods nearby	lots of nice green space
Bike paths	Gives downtown residents a haven to enjoy the river and experience the green space
Peace Bridge, connectivity	Nice open space - allows people to use whenever and however they would like...lounging, playing with heir kids, etc.
Central location	Landscaping, river and city views
size/width/trees	Green space along river in the city centre - healthy for people, (could be a) buffer for river environment
Location to the core	Grass and trees and place to hangout and take in events
The location! It's well used, and exactly what downtown Calgary needs.	The open space
Love the sidewalks for roller blading, bicycling, jogging and stay in touch with nature in the middle of the city.	Green space
	I really like the lane of trees between the Jaipur bridge and the Peace Bridge
	Public green space for all Calgarians to enjoy.
	Natural riverbank, including wildlife (particularly beavers and birdlife)
	open spaces, River view
	The beautiful, open space for everyone downtown to enjoy
	River and green spaces
	Green spaces
	Nature
	big green space , easily accessible, free
	Great to have a park by the river
	Is right next to the river, amazing views from it, nice quality buildings around and lots of trees.
	Large area for people away from cars; Chances to enjoy the river ;
	a great place for downtown workers to go for a break, a walk, or eat their lunch.
	River and river back, attractive pathway, large trees, benches, small natural forested area.

WHAT IS GOOD ABOUT WEST EAU CLAIRE PARK?

AMENITIES	SAFETY AND MAINTENANCE	OTHERS
<p>Festival Facilities</p> <p>Nice benches to watch passerby's</p> <p>Lighting</p> <p>Street furniture</p> <p>Prince's Island is a great venue for festivals, Shakespeare in the park etc. Always great to see how well used it is.</p> <p>The Street Performers</p> <p>The number of festivals and events.</p> <p>There are always events and festivals in the summer. People gather here and the atmosphere is good.</p> <p>Festivals</p> <p>Events on Prince's Island, popularity with all ages</p> <p>Shakespeare in the park</p> <p>It's just a fun place to go for a walk</p> <p>Next to the Bow River, trees and a place where people can walk and congregate. I like to see people skating on the "pond" in front of the River Cafe.</p> <p>the river, the proximity to the island, lots of seating space and park land for lounging at lunch hours</p> <p>The open spaces in the west end of the area for Frisbee, etc.</p> <p>The availability of benches along the paths to take breaks, enjoy the scenery.</p> <p>Benches, good people watching</p> <p>I love the variety of activities that are integrated into the natural area</p> <p>A quiet place surrounded by a busy city.</p> <p>It serves as a really lovely recreationally area, particularly in the evening in the summer. It is also very aesthetically pleasing</p> <p>It's a nice place to hang out and ride through and ice skate in the winter.</p> <p>Benches</p> <p>It is well used and provides some different features along the way--a bit of art, bridges, some connecting bike-ped. routes, street furniture, some shade and potted hanging flowers which are nice to see.</p> <p>Large mixed use pedestrian space</p> <p>The recreation</p> <p>It is a wonderful place to walk etc., along the river away from all the noise and commotion of the traffic on the streets near by</p> <p>Multiuse area that brings together community</p> <p>It is always alive with walkers, runners, bikers & roller blader's.</p> <p>Ability to exercise</p> <p>The proximity of amenities such as food sources, bike rentals, the zoo</p> <p>Relationship to river and downtown amenities</p> <p>I love the wonderful feeling of walking along a European promenade with people of all ages. I love the buskers filling the walkways with music and the kids break dancing.</p> <p>Wide-well lit boardwalk</p>	<p>Safe</p> <p>Well maintained all year round</p> <p>Clean</p> <p>CLEAN</p> <p>SAFE</p> <p>The landscaping, flowers, trees, etc. are always extremely well-kept.</p> <p>clean/well kept</p> <p>I used to be scared to bike these but now absolutely gorgeous</p> <p>Well taken care of by Parks</p> <p>Well maintained</p> <p>Safe</p> <p>Clean, Well maintained with snow clearance, Pedestrian and bike-friendly</p> <p>open enough to be safe</p> <p>Improving all the time</p> <p>It's a welcoming space</p>	<p>Peaceful</p> <p>Beautiful</p> <p>Sense of community</p> <p>The park area is a peaceful quiet oasis in the heart of downtown</p> <p>Quiet</p> <p>a nice change from the business of Eau Claire and Princess Island</p> <p>beautiful natural oasis near downtown</p> <p>Free</p> <p>Peaceful, beautiful</p> <p>roomy</p> <p>It is fun</p> <p>Don't go into any of the downtown area. Avoid it.</p> <p>good place to relax</p> <p>Love the atmosphere of bringing all types of people together</p> <p>It draws a lot of people</p> <p>It is Beautiful</p> <p>Visually attractive on the whole,</p> <p>not much. I avoid this area like an ex girlfriend.</p> <p>Beautiful scenery, nice area.</p> <p>Well used, historical</p> <p>Sunshine!</p> <p>somewhere peaceful to go away from busy downtown life</p> <p>It is a relief to the excitement and loudness of Prince's Island park</p> <p>Beautiful area, and is used by lots of people.</p> <p>Enjoy the area even though it is often too crowded</p>
MINIMIZE DEVELOPMENT		
<p>No commercial activity like there is from the mall, and no future housing development</p> <p>everything, leave it alone</p> <p>not much</p> <p>All.</p> <p>Public access. The park area is pretty good already, I'd leave it alone.</p> <p>The City is expropriating space that should kept as green space.</p> <p>Leave this area alone. IT DOESN'T NEED CHANGING.</p> <p>Retain Peace grove adjacent to Peace Bridge</p>		

WHAT IS GOOD ABOUT WEST EAU CLAIRE PARK?

AMENITIES	SAFETY AND MAINTENANCE	OTHERS
<div>Shops, downtown</div> <div>Keep it Green</div> <div>Keep it Public</div> <div>The fact that it is undersigned/unplanned space that allows for community gathering</div> <div>Not over developed</div> <div>People friendly scale</div> <div>Low Density, can still see the Sun during the day</div>		
<div>COMMERCIAL</div> <div>The mobile bicycle mechanic is awesome. As one who cycles to work regularly, this service is something I value.</div> <div>no commercialization, green spaces, mature trees</div> <div>Access to some shops</div> <div>River Cafe restaurant, restaurants/bars such as Joey and Barley Mill</div> <div>Mixed use</div> <div>Food vendors</div> <div>The buskers!</div> <div>No commercial development, advertising or billboards (one of the few spaces downtown)</div>		
<div>ART</div> <div>Hungarian Kopjafa monument</div> <div>Space for public art</div> <div>Mini sandstone arc de triomphe</div>		
<div>PLANNED EVENTS</div> <div>Prince's Island is a great venue for festivals, Shakespeare in the park etc. Always great to see how well used it is.</div> <div>The Street Performers</div> <div>The number of festivals and events.</div> <div>There are always events and festivals in the summer. People gather here and the atmosphere is good.</div> <div>Festivals</div> <div>Events on Prince's Island, popularity with all ages</div> <div>Shakespeare in the park</div> <div>Outdoor festivals</div>		

WHAT CHANGES SHOULD BE MADE?

CIRCULATION AND ACCESSIBILITY

No more vehicles
separate lane for cyclists/pedestrians - avoid accidents
separate cyclists lane to avoid collision with walkers
another bridge
separate bike path
separate walking and biking
separate bikes/wheeled traffic from pedestrians

separate bike/walking paths
wider path ways - conflicts between pedestrians and cyclists, divided lanes
less paving, more natural green spaces - pathways are important, but why are they treated like roads, extremely wide and the use of asphalt are a typology that should be reconsidered

extend the separated bike land from East Village, pedestrian congestion is bad in summer on west pathway

Continue the design of River walk into this sections of pathway

Having separated pathways for pedestrians and bikes/bladers is excellent

Signage in River walk is also excellent and provides all the information a person needs for way finding/distances

Separate pathway uses (separate lane for bikes - it is very dangerous riding through this section of the pathway)

Some type of traffic strategy/bike lane (with speed limits), as it can be a bit dangerous with bikers and other wheeled vehicles weaving in and out of pedestrians

separate bike/pedestrian walkways would be fantastic. It is a high traffic area
Quieter and less bike traffic

Need a separate bike path all the way with separate pedestrian path along the river
Pathway needs to be widened, I'm a daily bike commuter and the area can be heavily congested with walkers, runners, young children on bikes, people pushing strollers

The divided path through East Village may be a model to follow

Separate bike lane as with East Village River walk. Whole Eau Clare area is a bottleneck. "BIKES ONLY" signage important.
Too many bikes and pedestrians mixing at some locations.... especially around Eau Claire and princes island
Separate bike and pedestrian traffic like in the new River Walk section.
Separate/devoted bicycle pathway (during peak times, with many rollerbladers and bikers, coupled with strolling families, can make the existing path quite congested).
separated bike and pedestrian tracks

Right now it's more of a transit corridor than a place to gather, separation of traffic modes

Wider paths with lanes specific for runners. I can be a challenge to get around people out for a slow stroll.
Twinning of the pathway, separation of bikes from peds

VEGETATION AND OPEN SPACE

Keep the Green Space
Keep the Trees and bushes
Shady trees on both side like East of 6th St. SW
more fir trees
flat open spaces for informal soccer - Frisbees etc.
keep it natural areas by the river as wild as possible
Flood debris still needs to be removed along river banks

wide spaces
add more trees, develop some flower beds in areas further west

encouragement of natural plants/flowers

more flowers in summer

nicer vegetation - Tivoli gardens in Copenhagen

more trees

more flowers

more rest spots

More trees in the Peace Bridge area

South end of Peace Bridge needs Landscaping
More interaction with the river should be allowed through the suggested rest nodes

Provide shade

Make river accessible

Tidy a bit of the river banks -i.e. further west of the Peace Bridge

more flowers and greenery to enjoy the breathing space there
Clean up of dead bushes,
I would like to see more gardens (community gardens for those who live in the downtown area).
Very under-utilized space near helicopter pad & peace bridge - do we need all that grass?
It would be nice to have more grass around the water park

More flowers, it would be nice to have year round decorative stuff

More Trees

More trees between Eau Claire and Kensington Bridge, more flower beds, community gardens

WHAT CHANGES SHOULD BE MADE?

CIRCULATION AND ACCESSIBILITY	VEGETATION AND OPEN SPACE
<p>River walk style pedestrian / bicycle separation through the route to better facilitate all users</p> <p>deal with aggressive cyclist to make the pathway more user friendly to all</p> <p>Or, a dedicated bike lane like the north side on Memorial</p> <p>separate the bikes form the pedestrians - if possible</p> <p>Segregate pedestrians and cyclists.</p>	<p>More Trees</p> <p>Get into negotiations with Transport Canada about relocating the helipad to Pumphouse area</p> <p>More trees and shaded areas</p> <p>Spaces for gathering/reflection would be a nice addition</p> <p>Maybe a plaza where people can sit or listen to musicians</p> <p>Lights should be improved. I prefer to lower LED lights along the path - existing lights can sometimes be obscure by branches or flower baskets</p> <p>I recently walked along the bow next to Chinatown and was pleased with the changes there (i.e., nice landscaping and benches). It would be great to see that carried through to integrate the whole pathway</p> <p>More trees other than that it's good as-is</p>
<p>Improve connection from 7 St. to Peace Bridge (currently blind spot when crossing east-west pathway when travelling north-south)</p> <p>Separate pedestrian and bike traffic like on River Walk.</p> <p>Separating Pedestrian & Cycle paths, and making the Lower C Train bridge Pedestrian use only</p>	<p>More trees, additional landscaping,</p> <p>it should be kept as an open space, an open public park for all citizens and guests of Calgary to enjoy</p>
<p>separate bikes and pedestrians</p> <p>The original plan was to relate a bikeways along 2nd Ave - finish the plan! The approaches to the Peace bridge are under designed and underwhelming!</p>	
<p>The pathway network around the Peace bridge needs to be better organized.</p> <p>Pathways through a landscape that is not highly manicured.</p> <p>walking areas must be wider.</p> <p>have a separate bike path</p> <p>Separate lanes for bikes, lots of traffic on the pathways. Might help to organize it</p> <p>better direct access to river</p>	<p>More Trees</p> <p>The area between the Peace Bridge and Louise Bridge is barren in parts. Could it be landscaped?</p> <p>More scenic rest stops</p> <p>more park space and places to congregate.</p> <p>Leave a lot natural do not groom the entire area.</p> <p>There needs to be some landscaping done near the Peace bridge kind of like what O2 architecture proposed.</p> <p>more purposefully variety landscape - have a few specifically designed open areas (for those who want open space) and have specifically designed landscaped areas for sitting, enjoying shade and sun, flowers, etc. Right now it seems like a big field with occasional efforts at something else.</p>
<p>Improve access to the west side of Prince's Island. The vehicle access point is unattractive and unappealing. Lighting in the area (overall the pathway) is poor.</p>	<p>make the area around the bridge look nicer. I don't understand why you would change anything else.</p>
<p>A segregated, or semi segregated bike lane/path, along the pathway would hugely improve my experience using it.</p>	
<p>no cyclists should be allowed</p> <p>rebuild the promenade to have separate bike and partisan paths</p>	<p>Adding flowers and colourful greenery will distinguish the park from the woodsy Prince Island to a manicured West Eau Claire Park.</p> <p>Restore the Island that was damaged by the flood</p> <p>New ecology such as cherry blossoms or red maples could be introduced to make the park have a spring of red colour, to match the Peace Bridge.</p>
<p>Wider pathway</p>	<p>Should look to Venice beach set up. Smaller basketball courts southwest of the Peace Bridge by the concord building, some public workout areas and equipment (Look at Copacabana Beach in Rio). That area is so underutilized for such a big space. The area is much like a conveyor belt for people at current. People need things to stop them, take a breath and enjoy the area.</p> <p>More public space</p>
<p>Make the access safer for commuters on bikes coming from the West</p> <p>widening the pathway all the way to 10th street</p>	
<p>Separate bike lanes from pedestrians and ticket pedestrians who use designated bike lanes. Too dangerous as it currently stands.</p>	<p>more developed access to the river</p> <p>the river is hidden, should be opened up (think The Seawall in Vancouver). Bylaw enforcement and CPS sweeps should be more regular, it is a scary place after dark.</p>
<p>Less bike traffic, or post speed limits</p>	
<p>I'd like to see better signage on the path right beside the river from the peace bridge to 10th street that no bikes are allowed. It is nice not to have to worry about being hit from behind by a faster moving "vehicle"</p>	<p>Not sure - it's pretty good the way it is. Wish it was bigger!</p>
<p>Separate bike / walking areas similar to the east end</p>	
<p>Physical separation for cyclists & pedestrians (similar to River Walk)</p>	<p>As Mayor Nenshi said, the rivers are the heart of Calgary, so how about allowing for greater integration of public and river space?</p>

WHAT CHANGES SHOULD BE MADE?

CIRCULATION AND ACCESSIBILITY	VEGETATION AND OPEN SPACE
<p>Would like to see the area is walking/biking only - no cars allowed similar to Stephen Ave</p> <p>Separated cycling facilities - even delineation of the existing promenade between peds and other users would help as there are no vehicle conflicts. Also access to businesses and the street isn't clear.</p> <p>Wider, safer pathways</p> <p>A separated bike lane like the other parts of the bow river pathway - keep cyclists separated from walking traffic</p> <p>If the main path south of the park was developed to have a walking lane and a bike lane similar to the one east of the centre street bridge.</p> <p>Separated bike and pedestrian pathways, better signage were they interact</p> <p>Wider pathways, smoother pavement</p> <p>River Walk-style separation of bike and other traffic is needed as well - this is a "busy" pathway</p> <p>better divided bike lanes for commuters</p> <p>Separate pedestrian and bike lanes for the safety of both cyclists and pedestrians.</p> <p>Separate trail for bicycles is desperately needed, as now everyone mingle and it's not safe.</p> <p>separate bike lanes from slower recreational users</p> <p>definitely separated pedestrian and cycling paths. preferably with a barrier as during peak hours it is almost dangerous, as there blind intersections and commuters versus strollers vs. recreational cyclists.</p> <p>Widen area of path west of 10 street to accommodate both cyclists and pedestrians. .</p> <p>separate bike path-it can be challenging to maneuver around walkers</p> <p>physical separation of cyclists and pedestrians</p> <p>Better separation of bike and walking routes, especially at the downtown commuter access points on 2nd and 3rd Avenues, and for crossing riverside at 1st street to travel up 1st street SW, fewer hiding spots just west of 10street bridge for the homeless/inebriated folks</p> <p>But major things is making a safe division of the pathway space for recreational and commuter cyclists.</p> <p>Separate pedestrian and cycle paths clearly so we walkers won't be cringing in fear.</p> <p>Maybe some divided walking/cycling lanes to help with safety and congestion?</p> <p>rules for the pathway, do not allow Segway's on path, motorized vehicles should not be in park areas</p> <p>in response to cyclists who complain about pedestrians on "their pathway", there are often buskers on the pedestrian part, so we have to pass on the "cyclists part", I can't mow these people down!</p> <p>need to have a wider pathway or separate the path so bikes are not mixed in among everyone</p> <p>Widening of pathways - connections to downtown and local regional pathway systems</p> <p>Wider trails leaving Eau Claire up to Shouldice Park</p> <p>Separated bike and pedestrian paths.</p> <p>Provide better bike and pedestrian lanes to promote safe separation.</p> <p>Please separate bike / walking modes where possible (similar to east village, paint or coloured concrete etc.)</p> <p>Separate paths for cyclists and pedestrians would be greatly appreciated; however, enforcement is needed to keep pedestrians off the cycle-only paths and vice versa.</p> <p>SEPARATE WHEELED AND PEDESTRIAN TRAFFIC. CONSIDER OVERPASS OR UNDERPASS AT EAU CLAIRE PLAZA</p> <p>If possible, a separate pathway for bikes and skateboarders. The current pathway is very busy and can be dangerous for riders and pedestrians. The separate pathways east of centre street are an example of what works very well. Also, modern trash receptacles like those east of centre street should replace the current open containers. Provide one or two rest nodes similar to those east of centre street.</p>	<p>How about maintaining treed river bank, but providing greater access to water, such as "picnic" spots, which would maintain their natural integrity (and the integrity of the riverbank ecosystem) while providing families an opportunity to sit along natural riverbank.</p> <p>How about some areas for recreational use of water, like swimming holes?</p> <p>I think the river walk should be continued, but with more emphasis on preserving the natural riverbank</p> <p>Extend the beautiful tree canopy westward. Clean up area near Helipad - perhaps remove fence. Integrate with 8th St. improvements.</p> <p>Expand green space when possible as a secondary location for festivals/events.</p> <p>A city run enclosed vegetable garden that would be viewable by the public but not accessible to them. Healthy vegetables could be provided to the public and the City would demonstrate that it supports locally grown produce</p>

WHAT CHANGES SHOULD BE MADE?

CIRCULATION AND ACCESSIBILITY

Also I realize this is an important transportation and recreation corridor for bikes, skates etc. (I use it too!) BUT its crazy busy and unsafe at times. Bikers, skaters, joggers need to realize (through signage, design, education, enforcement), that this is a congested multi-use area not a commuter thoroughfare.

I think it would be best to separate the bikers and walkers along this stretch. Just like in East Village.

Continue the pathway improvements along with increasing safety.

Everyone cuts across the grass (front of Concord condo sales site) to make a beeline for the bridge, and the ground is a mess, especially when it rains. You may as well break down and build a proper pathway.

Must have separated bike and pedestrian pathways there. It's absolute chaos during busy times especially during lunch time.
separate speeding cyclists from other users

Bicycles should be redirected or forced to slow down.

Separate pathways for Walkers and Bikers that are clearly identified

Wider pathway, separation of pedestrians and cyclists. Recognition that it is a cycling commuter and recreational route - require passing space for commuting cyclists

Separate pathways for pedestrian and bike/rollerblade users, such as on North side.

Make distinct paths for pedestrians and wheeled citizens.

It's proximity to Kensington and Prince's Island Park make it an ideal area for bike/foot traffic.

add separate bike pathway where possible

separate pedestrian and cycle traffic BUT only after ALL the city flood-damaged pathways are repaired
separate bike path,

Widen the pathway south from Peace bridge to the Eau Claire main path and widen the older path next to the river.
slow down the bikes, or separate them for safety

Have nearly been run over by bicycle commuters - they should NOT be allowed to "rip" through the area scaring everyone to death including my sister who was in a wheelchair and feared getting hit by one of those speeding cyclists. Complained to the city and police but it was still the same the next time we went. Bikes MUST BE SEPARATED from the pedestrians because pedestrians can't relax knowing they can be hit by a bicyclist at any time.

Separating the pedestrian and cycling portions of the pathway, as on River Walk; Improving intersection sightlines ,Improving pathway access to the Peace Bridge

Separate pedestrian-cycle paths;

The pathway is extremely popular and, with popularity comes 'conflict' between travel modes. Separating wheeled travellers from pedestrians (and runners), similar to River walk, would be something to investigate. Bear in mind though, that any dedicated space for cyclists (and other wheeled travellers) should be designed around their mobility needs (i.e. not meander as River walk does and have logical connections to on-street bike routes, etc., something River walk does not). In terms of wheeled travellers, asphalt is easier to travel on, particularly for children on inline skates.

If it is possible, because of the volume of people using the area it would be ideal for foot traffic and bike traffic to have separate pathways. On a recent bike outing it was quite evident that we bikers disturbed leisurely strolling even when there was no speeding or carelessness. I would include roller bladders on the bike path and keep them off pedestrian trails. I saw way too much reckless speed with roller bladders including some hauling child trailers!

Sightlines should be improved from east to west, especially where there is congestion, such as where the north/south pathways intersect. Also, there is a structure at 51.0539 and -114.0689 (lat/lon) that should be moved or removed as it causes traffic going both ways to pinch to the north side of the pathway, creating congestion and a hazard.

Also, right off the Peace Bridge on the South Side, the pedestrian traffic patterns are chaotic as people try to get to the east or west sides of the bridge. More arrows or signage indicating people should keep right, for example, would be helpful. Currently, the park leads to nowhere. You walk around but once you pass the Louise Bridge going west the pathway shrinks and takes a "dive". So you end up stopping and turning back into the city core. I would make the park more of a hub and expand more into the west end.

VEGETATION AND OPEN SPACE

WHAT CHANGES SHOULD BE MADE?

CIRCULATION AND ACCESSIBILITY	VEGETATION AND OPEN SPACE
-------------------------------	---------------------------

The high volumes of walking and cycling that have been reached, regularly exceed what the existing infrastructure can safely accommodate. The pathway ought to be separated, much like on River Walk. This would provide efficient space for cycle commuting and safe space for walking. It's long overdue.

Dedicated bike lanes. It is very difficult to bike among all the pedestrians. Better pathways to the Peace Bridge. You come off the Peace Bridge in a bike lane and then merge onto pathways that can only hold two people across.

Separate the pedestrian from cycling parts of the path somehow - kind of like on the Peace bridge maybe where cyclists are generally in the middle and pedestrians on the edges. The path is wide enough that there is no reason the 2 groups cannot be separate more.

Pathway going west from the Eau Claire Place and the bridge going north from the plaza are very busy areas particularly on the weekend with families. It 's quite dangerous with cyclist riding very fast and skateboards for the pedestrians and families with children

WHAT CHANGES SHOULD BE MADE?

AMENITIES	SAFETY AND MAINTENANCE	OTHERS
<p>Need garbage collectors for cigarette butts and garbage</p> <p>soccer and basketball courts - designed to play both, fenced but not locked</p> <p>More seating</p> <p>Outdoor exercises machines</p> <p>a heated warm-up space for those who walk all winter</p> <p>more bathrooms</p> <p>and outdoor circuit style gym</p> <p>more bathrooms</p> <p>more benches</p> <p>outdoor gym</p> <p>Add features to attract people to stop in West Eau Clair instead of further East where the pathway gets congested</p> <p>urban gym like the one near Louise Riley Library</p> <p>more benches</p> <p>teach city workers how to and when to make skating ice</p> <p>public bathrooms for older folks</p> <p>water feature at Eau Clair - updated and improved</p> <p>add seating at water features</p> <p>add water feature at 8st west</p> <p>add a few more water fountains a long the way</p> <p>put in exercise equipment - pull up bars</p> <p>larger playground beside waterpark</p> <p>add picnic tables so people can eat by the water</p> <p>provide more wasted bins and recycling bins</p> <p>more benches</p> <p>more benches</p> <p>soccer play ground</p> <p>water fountain for filling up water bottles, pet dishes, etc.</p> <p>washrooms</p> <p>more equipment to promote physical activity for both younger and older adults - out door fitness equipment</p>	<p>Cyclists dismount - walkers endangered</p> <p>more security - odors of Marijuana</p> <p>better security; many people smoke pot around lagoon & river café area</p> <p>markings for bike lanes to make it easier for pedestrians to stroll worry free</p> <p>emergency phones</p> <p>slightly heavier police presence</p> <p>more cameras</p> <p>enforce bicycle speed limits - too many bicycle speeders putting pedestrians at risk</p> <p>better lighting</p> <p>Clean up homeless</p> <p>Sometimes at night, the area can seem a little less lit and more deserted than other areas along the river, which makes it feel less safe (especially off the main path)</p> <p>Many people do not understand how to react to a bike bell, the should move to the right, but often times they don't. Regrettably, I collided with two pedestrians on the section of path this year.</p> <p>People who simply refused to move to the right</p> <p>Better security and enforcement to ensure safe conditions for everyone.</p> <p>kick out the hobos</p> <p>Ask Cyclists to dismount between 12 and 1 Monday to Friday between Center and 10th - or take 3 Ave bypass. Some pedestrians walk in groups (unfortunately) which means faster walkers/runners have to cross the middle area to pass and cyclists need to pass them. It leads to additional stress and close calls.</p> <p>The rivers edge is eroding dangerously, and the homeless aren't making it comfortable in the dusk hours. There is modification of the bank in terms of moving rocks to create new rapids near the Louise Bridge, and it makes for dangerous flows in the river downstream.</p> <p>Need to further assist the homeless of the area so that they are not loitering in the area. It makes it unsafe and hard to enjoy when someone is using drugs along the shore.</p> <p>Keep improving lighting/visibility to keep safety a priority</p> <p>speed restrictions - discourage bikers from racing through this park</p> <p>nothing, just keep it clean and safe</p> <p>On the west side of 10th street there needs to be a focus on safety with so many drunk people on the path or sleeping nearby</p> <p>Stricter enforcement of bicycle speeds.</p> <p>Less homeless people</p> <p>Better security. More police presence. Drug addicts ruin area.</p> <p>Fix the uneven spots along the pathway nearest the trees and river.</p> <p>very few - clean up mostly</p> <p>please have the by-law officers patrol this area (and all pathway areas), I have witnessed large groups of young people during grad time, drunk and disorderly at 5pm. They completely blocked the peace bridge, not allowing anyone to pass. How can this be allowed? This is crazy.</p> <p>Bylaw enforcement and CPS sweeps should be more regular, it is a scary place after dark.</p>	

WHAT CHANGES SHOULD BE MADE?

AMENITIES	SAFETY AND MAINTENANCE	OTHERS
<p>public washrooms further west from Eau Claire mall/ splash pool</p> <p>add water play ground for 3-9 year olds</p> <p>more playgrounds for children</p> <p>Tables and chairs, benches, etc. for picnics</p> <p>Benches for resting and watching wildlife</p> <p>I've seen lake and river side parks in Nelson BC and Bratislava Slovakia with stationary exercise equipment for public use.</p> <p>Things that people of all ages can use.</p> <p>more seating along the river, more covered spaces, add public bathrooms</p> <p>Better lighting</p> <p>Get rid of helicopter pad, better utilize space on west end of Peace Bridge, improve lighting for winter runners and commuters.</p> <p>Seating on the riverside of the pathway as opposed to across the pathway on the south side of it.</p> <p>Better lighting along the pathway, signage to remind everyone to keep the right no matter what they're doing, people walking dogs on extended leashes and little kids on bikes are a particular problem for runners and bike commuters. The Eau Claire Market could sure use some upgrades</p> <p>More benches and trash cans, maybe a few extra street lights as it can be pretty dark in some areas</p> <p>Could also add in a small playground area (simple swings/slide, etc.)</p> <p>Chess tables, picnic tables, dedicated cycling lanes</p> <p>more rest areas, benches,</p> <p>Neighbourhood garbage locations,</p> <p>Additional provisions of permanent water fountains and significantly increased bench capacity are desirable.</p> <p>Better lighting in the evening</p> <p>More garbage cans to deposit in, bicycle racks to lock up and take a stroll</p> <p>make park 24 hours</p> <p>Some extra benches would be nice.</p> <p>Get rid of the kids water park</p> <p>There should be more benches in the area near the Peace Bridge.</p> <p>I definitely believe that there should be some public restrooms in the west park area, as the Eau Claire mall area is too far away. The entire pathway system would benefit by having the European self-cleaning style restrooms - if they work on the streets of Paris, why not here?</p> <p>Fitness Park & Water Fountains</p> <p>If you are thinking of adding something I picture a building (maybe the Simmons building) with a rooftop garden and inside cooking classes; People can grow food, learn what to do with it, have canning classes etc. I got back from my work conference in Vancouver and Michael Ableman was one of the speakers; he started Solefood in Vancouver... picture vacant lots turned into gardens; people that were down and out got to work in these gardens, thus giving them a positive experience, making them feel important, giving them skills, food would then be sold to local restaurants. Just think more people need to know where there food comes from, grow their own food etc. Could even have composting classes beside it. There are lots of apartments being built in that area.. wouldn't it be cool if near those there was a community garden or rooftop gardens to bring people together; would build the community, people would get healthier etc.</p> <p>Right now it feels abandoned and misused. Eau Claire could be gentrified in order to become a hub of community, innovation, and culture. It should be CALGARY centered, that is, it speaks to what Calgarians truly need. It should celebrate Calgary's food, art, culture scene. It could use Granville Island, Meat Packing District, St. Lawrence Market as inspiration. Eau Claire should leverage its vicinity to downtown, the bow river pathway, and Prince's Island Park as a way to bring Calgarians together in a community environment they can be proud of. Eau Claire should synthesize family friendly activities such as flea markets or farmers markets with more adult activities, such as shopping, beer gardens, restaurants and cafes.</p> <p>improve lighting for safer traverse after dark.</p>		

WHAT CHANGES SHOULD BE MADE?

AMENITIES	SAFETY AND MAINTENANCE	OTHERS
-----------	------------------------	--------

Should add more benches, tables, somewhere to sit and relax

Additional public parking lots should be added. More benches could be added.
Lighting needs to be improved and cyclists should be separated from pedestrians. Get rid of narrow, poorly lit areas that would discourage people from accessing the area in the evening or winter.

more public use areas for families (like benches, tables, playgrounds) More washroom facilities

additional seating, public art, remove helipad.

Build a big concrete barrier around it to protect it from flooding.
More seating areas
In other cities with pathways around waterways they have introduced permanent stations for interval training (running and exercising). Something like this would be great.
perhaps a few more benches otherwise leave it alone the little splash pool should be totally revamped
More seating, but real benches, not awkward "sculptural" seats no one wants to sit on
The Jaipur bridge at the east end crossing to the island NEEDS Lights!!!
add a large playground for kids somewhere along the pathway in this area

skateboard friendly benches
also better lighting at night, it is quite dark.
public washrooms would be helpful with out that adding to the drug trade
Exercise stations (chin-up bars, push-ups etc. for example:
http://www.newwestpcr.ca/parks/park_amenities/outdoor_fitness_circuits.php, maybe some picnic tables

washroom facilities on the pathway would be handy, but I understand the challenges with that. a parkette setting for people can stop and have lunches. bike parking facilities.
Rest nodes, benches for picnicking, enjoying the view and resting would enhance use.
Fenced, dog off-lease park, better lighting, destination restaurant district but no nightclubs.
A couple of additional drinking fountains along the path would be nice, as would a few more benches. A separate area for skateboarders, if it would help keep them from doing stunts along the main pathway.
Maybe more seating options, lighting.

Picnic Areas
waste bag dispensers for dog walkers
More seats to rest at;

more public washrooms and water fountains. Improve older pathway asphalt- bumpy for inline skates. skating rink
Why do anything besides add benches? Maybe ask for donations in memoriam for people who have died and inscribe their names on the benches.
Also have some wintertime ideas such as using the river as an ice skating/hockey rink, a manmade tobogganing hill, a hot chocolate and coffee kiosk, decorate with Christmas lights, etc.

The pathway is incredibly dull. Look at the Seawall in Vancouver or the River walk near East Village, and see the standard that waterfront green spaces should be. The Peace Bridge glows beautifully at night, yet the paths have this cold yellow stream of light that makes the park creepy past 9:00PM. Creating a new lighting scheme, adding lights with hues of blue or red to reflect the river or the bridge similar to East Village's River walk. More art sculptures and murals need to be installed. The Peace Bridge seems to be the only landmark in the park, and is alone to such a dull landscape.

More lighting on the bridges
I would like to see more LED colour lighting at night, it would be nice and also provide security for night walkers or joggers.
Also, I would like to see Eau Claire more integrated to the Prince's Island park too. An extension of the sidewalks would be nice to complete a jogging/sports circuit, more trash bins around, CCTV cameras for security and more benches on a side of the river to enjoy the place seated reading a book.

More of the same, but perhaps a safe river lookout.

WHAT CHANGES SHOULD BE MADE?

AMENITIES	SAFETY AND MAINTENANCE	OTHERS
-----------	------------------------	--------

kids activities area's, skate park for the very popular skateboarding, rollerblading. We need to provide some of this space to the younger generation to enjoy and get them off the streets.

Better lighting (especially Jaipur bridge).

More parking is needed and extended hours for all shops in the area so that it feels more alive, vibrant & family-friendly (9AM-9PM, 7 days/week)

Make it more like the River walk in the East Village, more urban, wider pathways, more vendors,

adult urban exercise equipment (like in Radium BC)

Build a spray park for kids on hot summer days.

I think there need to be more places to be able to stop and watch the world go by, and not just park benches or tables.

A lot of people use the pathways in that area for running, biking, and other fitness activities (even river access for things like kayaking and river surfing), it would be nice if there was the addition of outdoor fitness equipment (i.e. pull up bars, or a fitness circuit of some type) so that it could be more of a complete active living area. There used to be something like that in Princes Island Park, but it was torn out.

; add picnic tables; improve riverbank park west of Louise Bridge at the same time.

Relocate heliport;

Better lighting along the route
improve "street furniture" and public art; better lighting and signage; better transition at 8th Street (perhaps a "shared space" concept could help blend the ugly parking lot with a busy cycle & walking path with the cars and road); better integration with the riparian space to improve water access, provide flood protection.

MINIMIZE DEVELOPMENT

none

None. Don't fiddle with something that's currently working well

minimal

No changes

I am satisfied with the way it currently is

Remove the heliport. Please do not add any more pavement or concrete. Also, please keep future development from further shading the park.

no more condo developments nearby we need an actual livable community i.e. average day to day stores and restaurants

Leave this area alone. IT DOESN'T NEED CHANGING.

Nothing

NONE

Nothing - it's great right now!

Leave it as is

WHAT CHANGES SHOULD BE MADE?

AMENITIES	SAFETY AND MAINTENANCE	OTHERS
<p>Personally, I think it's pretty good the way it is. I don't know why you guys want to change it.</p> <p>do not allow ant further deterioration of a natural public space, free for all to enjoy, with the condo developments that only the uber rich can afford and who have been treated with entitlements to dictate what the other 99.9% of Calgarians can enjoy in this area.</p> <p>limit future condo development</p> <p>Why are we always spending money on something that is fine the way it is? The only changes I can see is that the landlords for the Eau Claire market should charge less for rent so more businesses can set up. Being too greedy chased away many businesses and that has been an eyesore for years!</p> <p>No more condos or other buildings</p> <p>Leave it the same</p> <p>no changes required - unless to remove the heli-pad</p> <p>less development - no concrete condos</p> <p>no new condo developments near peace bridge - keep the green space</p> <p>Do not gentrify it</p> <p>nothing leave it the same</p> <p>demolish the Concord Development building ASAP and return back to nature, or utilize the parking space for food trucks.</p> <p>COMMERCIAL</p> <p>add food options</p> <p>I would like to see small Farmer's Market in the area during summer months.</p> <p>Allow buskers or performers to use the green space beside the 10th street Bridge in the summer</p> <p>Provide space and infrastructure for seasonal micro-businesses!</p> <p>There's nothing to do on the pathway - where are the cafes and restaurants</p> <p>More draws for public activity, food and/or entertainment.</p> <p>A few rest nodes would be great, as well as a coffee stand or two (small and independent).</p> <p>More commercial spaces - restaurants, coffee shops, etc. More activities in the area - besides major events it is very space and empty most days. A focus on winter activities.</p> <p>Add more restaurants and make it more attractive like Granville Island in Vancouver, or the Piers in San Francisco</p> <p>needs a casino to compete with grey eagle etc. .</p> <p>Small coffee, snack, ice cream vendors.</p> <p>I would like to see a "boardwalk" of restaurants and maybe a fairies wheel and Mary go round.</p> <p>Grocery shopping, preferably organic, natural foods</p> <p>outdoor cafes, maybe 3 or 4. sort of like River Cafe but not as complex or fancy. Add an urban, chic vibe to the empty space.</p> <p>The mall is taking up useful real estate, could be prime living space, or recreational space</p> <p>street level community areas! (coffee shops, nightlife, etc.)</p> <p>Some food and drink options would be nice along the river walk area or near the peace bridge (The River cafe is nice, but too pricey and upscale for some. Perhaps some mid level options. Similar to the Cactus Club on the English bay in Vancouver)</p> <p>entertainment available as you enjoy the walk; restaurants or patio type venues to stop and have a drink or coffee (winter).</p> <p>ideally I would like to see the Eau Claire Market come alive and be more like a Granville Island. Better food, farmer's market, true art and artisan product sources and less junk. The restaurant in the old lumber mill office is awesome but if it has to go it should go to Heritage Park or be an Eau Claire information centre highlighting the history of the area. A skating area and denied hie trails with equipment rental facilities in winter? The bike rental is in an ideal place to take advantage of bike explorations of the area.</p> <p>I think that the rivers in Calgary are sorely missing somewhere to stop, have a coffee, have something to eat and people watch or look at the view along the river. I think that a couple tastefully designed and tactfully placed cafes would be just what the area needs. The river cafe is amazing, but we need more such amenities, particularly in the summer time!</p> <p>More Mixed use space - cafes, art, benches</p> <p>Bike Rental</p>		

WHAT CHANGES SHOULD BE MADE?

AMENITIES	SAFETY AND MAINTENANCE	OTHERS
-----------	------------------------	--------

Coffee Shops

A parking area designated for food trucks

have areas for small street vendors, local 'artists'

pop up vendors - cold drinks in summer, hot drinks in winter

pop up vendors, adjacent cafes to pathway

market vendors (a La Europe)

food truck stops

ART

More summer vendors, more winter activities. Bike rentals/maps

The sculpture park in its present location does not work seems very odd and most people don't even know its there

have some cultural places/ i.e. visitors/ local residents learn about the history of Calgary or Alberta

Some Interactive public art would be perfect

Could also include public art spaces.

Additional art could add to the walk - take the ones from 5th Ave connector and put where more visible and appreciated

Outdoor art space to exhibit work of graduating ACAD students

perhaps a wall just for graffiti (it's going to happen regardless, so why not give a medium for artists to express themselves),

PLANNED EVENTS

bike only paths and more culture and activities year round, just because it's winter does not mean we should hide indoors.

How about ice sculpture competitions like lake Louise or skating along the river or something fun for everyone

Commission a piece of interactive public art.

sculptures by local artists, nooks for buskers inset along the pathway.

Area set aside for approved street performers

create space to hold festivals along pathway instead of roads

Events like in East Village

Fantastic in the summer - it needs "something" so more enjoyment during the winter month (ice festival, gas heaters in some location so we can have lunch there..., not sure how to do this

VISION FOR THE WEST EAU CLAIRE PARK

CIRCULATION AND ACCESSIBILITY	VEGETATION AND OPEN SPACE
new walk and bike path east of 3rd street	natural
bicycles, running, walking	small quite zones
connected (to path network and downtown)	urban park
bicycle access	open
accessible	nature
wider paths	natural
A fun green corridor for walks in the weekend and to work	Natural spaces - trees, plants, flowers
Needs to be safer for pedestrians while addressing the cyclist needs	no short grass
A place where pedestrians and cyclists and co-exist in harmony!	natural
Transportation Corridor	wild
Promenade	green space
Accessible	free and open
River Walk (East Village)	green
Biking, walking	open
Accessible	lush, natural
Bike connectivity to Peace Bridge & 7th Street cycle	a beach
Thoroughfare	green
Accessible	greenery
Accessible	Nature
biking	maintain mature trees
Connected, bike-friendly, walkable,	spaces
destination, river walk	Green
river access, safer pathways, connectivity	Open concept! Keep the Trees
emulate the river walk in East village.	Natural park oasis in the city that connects to the river with viewing platforms that people can walk and enjoy with their families.
accessible	Gardens
walkable	Open
Bicycle	Pleasant inner-city green space
Pathways	Nature in the city
connectivity	Trees, Shade
commuting	NATURE (please!!!)
separate bike and pedestrian paths	Natural
Cycling hub	Nature
Vibrant; pedestrian & cyclist friendly; easy to access green areas	Parks should be green and unstructured, Keep the river fringe semi-wild
Bike lane/path	sounds of flowing waters of the bow
walkable	natural
pedestrian friendly	Keep in natural - it is surrounded by a sea of cement
Well managed space that doesn't introduce too much pedestrian-cycling conflict at intersections.	Lush
walkable	Community gardens, and Green space.
accessible	nature, open
Separate bike lanes, better sight lines, better signage for peace bridge.	Vegetable gardens;
Multiuser, morning/evening commuter route for bikes and walkers, slower and faster areas	natural space
less congestion on the pathways	open
Acknowledge it is a place people travel through in high volumes and plan paths accordingly. But also add elements that give a reason to stay.	Nature
lots of room to walk and bike	Natural and spacious

VISION FOR THE WEST EAU CLAIRE PARK

CIRCULATION AND ACCESSIBILITY	VEGETATION AND OPEN SPACE
<p>Bike route</p> <p>pedestrian friendly.</p> <p>Defined cycling and pedestrian zones along the path</p> <p>connector route, feel in natural setting</p> <p>bike paths</p> <p>Accessible</p> <p>connect the community</p> <p>Accessible for all</p> <p>Low-stress (separate pathways)for cycling and walking</p> <p>allow room for expansion of cycling numbers, roller skates, walkers</p> <p>Multiple users - walkers, runners, bikers</p> <p>Accessible corridor for non-vehicular transportation, recreation, viewing and events.</p> <p>people bicycles relaxed MUP</p> <p>river walk</p> <p>close</p> <p>accessible, commuter friendly</p> <p>corrupt</p> <p>accessible</p> <p>. . . a relaxing place to walk and look at the natural scenery on a lazy spring, summer or fall day.</p> <p>Better/more clear designation of space for pedestrians and cyclists</p> <p>Destination for people to gather/visit/relax/move through that integrates both the leisure & transportation needs through the area as part of the Bow River Pathway.</p> <p>It's great the way it is. I don't believe separate lanes for walkers/bikers are always respected so I don't believe that would be much of an improvement. Leave the pathways as they are, encourage us to share the road and be good to each other.</p> <p>The park should flow and connect to the new Eau Claire market proposal and the 7 tower proposal to make it one bustling pedestrian hub, whether its day or night, summer or winter.</p> <p>Part of a corridor running from the old planetarium/science centre to the East Village and Inglewood. A cool, shaded, pleasant place to walk, bike, run,</p>	<p>a maintained natural green belt with the river front as the focus which is a destination instead of just a pedestrian / cyclist thoroughfare</p> <p>Green space with some tree shade, Space that continues to be where people want to bring visitors, take photos.</p> <p>open</p> <p>A park with a great deal of local plants just seconds away from downtown. A quick escape from concrete and steel.</p> <p>deteriorated/ could be optimized further to be a landmark</p> <p>green, plants, flowers, new trees (fruit)</p> <p>natural, treed, riverside oasis. Don't overbuild at the expense of the natural, and PLEASE don't cut down trees for a barren design vision as in east River Walk - tragic</p> <p>Green, natural areas for enjoying nature or quiet social gatherings.</p> <p>people and nature</p> <p>Parkland.</p> <p>Greenway.</p> <p>Green and natural space for all Calgarians to enjoy!</p> <p>green</p> <p>green, dog-friendly, lots of flowers</p> <p>vibrant, green, calm, oasis</p> <p>Retain non-programmable overflow area "as buffer" from the busy interactive Princes Island.</p> <p>green, exercise, natural, space</p> <p>vibrant, natural, access to the river calming</p> <p>Green symbiotic urban space for environmentally minded Calgarians</p> <p>I like that it feels like a bit of nature in downtown Calgary, not much traffic noise</p> <p>primarily green space</p> <p>dynamic seating, improved lighting</p> <p>Green space.</p> <p>Natural! Green! Lush!</p> <p>space for all to enjoy</p> <p>More landscaping and a peaceful oasis</p> <p>maintain green space,</p> <p>Open</p> <p>trees, grass, quite</p> <p>Natural beauty. We do not need and blue rings. Osprey nest platforms and beaver dams are better!</p> <p>Public, Green, Innovative</p> <p>Beautiful green space</p> <p>open, grass, sun, trees, shade, breeze, river, quiet.</p> <p>safe, clean, beautiful, open, natural</p> <p>Calm, peaceful green space, river access</p> <p>open, inviting, parkland that can be enjoyed by all Calgarians.</p> <p>green, calm, active (not sure how you balance calm and active but that is what I see), environmentally friendly and sustainable</p> <p>Modernization, conservation, wildlife, Youth.</p> <p>Calm, trees, community</p>

VISION FOR THE WEST EAU CLAIRE PARK

CIRCULATION AND ACCESSIBILITY	VEGETATION AND OPEN SPACE
	Safe, accessible, green public space integrated into the natural riverbank ecosystem.
	Spacious
	Open
	Natural
	Park
	Nature, Trees, Forest
	open, green
	Open space, keep green space for appropriate activities.
	natural, birds
	Sustainable (in terms of preserving the ecology of the river and native plants); contemporary design; bright; accessible; conflict-free; green

VISION FOR THE WEST EAU CLAIRE PARK

AMENITIES	SAFETY AND MAINTENANCE	OTHERS
places for sitting and shade	safe	peaceful area
lit up	Safe	attracting people of all walks of life
Activity for those who like it	non threatening, safe at night	people oriented
Reflective places to sit and enjoy	Safe	scenic
Introduce some of the elements that are present in East Village...art on the concrete pillars, decks, and landscaping.	Safe	Oasis
fitness	Safe	Peaceful
Multi-use areas - runners, walkers, family area, tourist attraction	safe at any time.	inviting
Multi-purpose	Safe	sense of community
Multi-modal	safe	calm
More functional. Everyone can feel comfortable using the area at their own pace.	Safe	relaxing
Reminiscent of Granville Island. Keep Millennials in mind, but also integrate family activities.	less hobos	quite
Picnic Tables	Safe	beautiful
seats	Safe	natural oasis
Something like Vancouver's Granville Island	Safe	peace and harmony
outdoor recreation site	safe	active living in urban setting'
lost of seating	A place that attracts good people and one where they feel safe.	protected
Model after other successes (e.g.. Pike Place Market in Seattle)	safe space day and night	beautiful
place for light pedestrian socialization for walking	safe	special
well lit	safe.	Peaceful
peaceful at night and well-lit.	Safe	Urban, funky, home.
Jaipur bridge needs lights!	A safe area for people of all ages and abilities to enjoy	Attractive. Mature. Separated. Urban.
Encourage food/drink carts, but not permanent cafes (it's hard to make a go year-round)	Safe	Vibrant
	safe	Inviting. Vibrant.
	CLEAN	Relaxing. Tranquil. Calm
	Security, Clean	Relaxing
	Safe	interesting, multi-purpose,
Create more restaurant/diner/cafe/pub patio space facing the river - like River Cafe, Boxwood, or San Antonio's River walk.		
Model after other successes (e.g.. Pike Place Market in Seattle)		
place for light pedestrian socialization for walking	safe-no risk of being hit by speeding cyclists.	Relaxing
I would like to see a more vibrant and bustling area 24/7 and 365 days a year. Something like Millennium park in Chicago would be beautiful.	Neat, Clean	Vibrant, community, year round
vibrant, social, fun, entertaining, the place to go/be/visit.	safe, clean,	Peace and quiet
add elements that give a reason to stay.	Reduce opportunities for illicit activities (such as transients' beer parties) that take away from citizens' opportunities to really enjoy the area.	Relaxing, fresh quiet
Skate spot.	nice and clean	Peace, quiet
Central gathering place for Calgarians. If you don't have anything to do, you go there because there's always something to do/see.		
Currently the area feels like a place for the after work crowd and twenty-something's. Bend, Oregon has a fantastic riverfront area called "The Old Mill" which is exactly what Eau Claire could/should be modeled after. Here is the link: www.theoldmill.com .	Clean	Shared
places to sit and enjoy the area.	Clean	Flow, movement
inner city park with broad range of amenities	Clean	Relaxing
multi-use	Clean	Active
multi-use	clean	Active, gathering
Easy to use for everyone.	Clean	inclusive, flexible
useable	clean	Serenity
multi - use winter and summer		wonderful
Lighting, sports		unique, engaging location
MINIMIZE DEVELOPMENT		Beautiful, vibrant, community, public space
small scale infrastructure		Lively, urban, fun, progressive, modern
human-scale; no over developed		organic
keep design simple		clean, active

VISION FOR THE WEST EAU CLAIRE PARK

AMENITIES	SAFETY AND MAINTENANCE	OTHERS
<p>Keep it like this</p> <p>Leave it alone it has a nice mix of uses</p> <p>Keep it simple</p> <p>Leave it alone</p> <p>Minimal development other than pathways and rest areas so that the river can be enjoyed in peace and quiet</p> <p>Leave this area alone. IT DOESN'T NEED CHANGING.</p> <p>It is nice as it is. There are many other options nearby if people want to use other facilities such as playgrounds.</p> <p>keep it n ice and affordable-a variety of tenants nearby not just the rich</p> <p>Keep it the Same</p> <p>No need to build more condos. If there is retrofit of a building (social housing), then building should provide interesting angles.</p> <p>natural peaceful uplifting with all the new apts coming in Kensington the river is going</p> <p>I wouldn't change much, to be honest.</p> <p>I wouldn't change much, to be honest.</p> <p>Keep it the same, but fix up the market!</p> <p>COMMERCIAL</p> <p>Mixed use</p> <p>multi use</p> <p>Dinning</p> <p>eating</p> <p>Local farmers market.</p> <p>Entertainment district, Kensington, Inglewood, 17 Ave</p> <p>cooking classes; composting classes;</p> <p>entertainment of every kind ...sports,music,gambling,shows, ...</p> <p>food</p> <p>non-commercial, Don't add a bunch of businesses - keep it grass-roots</p> <p>Cafe, night life</p> <p>Farmers market, a public place of entertainment, retail an open air mall with only walkways no cars or bikes.</p> <p>European promenade with coffee shops and bistros.</p> <p>This is Calgary's waterfront - it should not simply be park space. We should have coffee shops, restaurants, playgrounds...</p> <p>maybe some cafes or bistros along the pathway</p> <p>Busker Friendly</p> <p>Calgary's Granville Island,</p> <p>new cafes</p> <p>Inviting mixed-use semi-natural environment.</p> <p>ART</p> <p>culture</p> <p>artsy</p> <p>more art installations</p>		<p>vibrant, diverse</p> <p>Tranquil, beautiful, athletic</p> <p>community. hip. trendy.</p> <p>tranquil, relaxing, peaceful, clean,</p> <p>An oasis of calm so close to a bustling down town</p> <p>Useful, quiet</p> <p>creating a sense of community</p> <p>Peaceful, quiet - a destination area to spend the day with a picnic and a book!</p> <p>calm, people watching</p> <p>Sanctuary, welcoming,</p> <p>Touristy</p> <p>family, friendly, social,</p> <p>quiet, serene</p> <p>fun, availability, free</p> <p>Vibrant, accessible</p> <p>Gathering</p> <p>Year round. Family friendly.</p> <p>community, natural beauty.</p> <p>Diverse, recreational</p> <p>Beautification, oasis</p> <p>Energetic</p> <p>A place of tranquility, activity and beauty.</p> <p>Relaxing, convenient</p> <p>clean, trendy, youthful</p> <p>Active.</p> <p>Inner City Escape</p> <p>Peace, calm, tranquility, a place to get away from the noisy traffic, the smell of the river.</p> <p>efficient. well planned.</p> <p>welcoming & modern</p> <p>recreation, festivals, family fun, diversity friendly,</p> <p>Communal.</p> <p>Public, vibrant, natural</p> <p>clean place for relaxation</p> <p>Community destination</p> <p>calming, relaxing, fun</p> <p>Relax and unwind</p> <p>free access to all without pandering to the whims of those who have chosen to reside there,</p> <p>Keep it as a people's place.</p> <p>urban, energetic, modern</p> <p>Beautiful, utilized</p>

VISION FOR THE WEST EAU CLAIRE PARK

AMENITIES	SAFETY AND MAINTENANCE	OTHERS
<p>Artwork</p> <p>sculpture and monument settings, artistic</p> <p>art scene.</p> <p>more organic in design (not like Memorial Drive - no more metal bulkhead structures</p> <p>art</p> <p>featuring the works of local artists, musicians, etc.</p> <p>buskers & art</p> <p>Public art</p> <p>Recreation, Art, History,</p> <p>I see Eau Claire as a nice, central meeting point, it's often been the destination for evening walks with coffee and friends, I've also gone there for photo-shoots as a photographer, I've practiced capoeira in the afternoon, it's just a really nice location to relax in the summer/fall. Maybe you could add some winter activities so that it becomes a cold weather destination as well, such as an ice skating/hockey rink on the river, build a large tobogganing hill in the winter, or something like that.</p> <p>rendezvous, open space, green space, place to breathe, spot to walk/mingle with friends, a place to have a beautiful walk by the river, a walk to spend quality time with family or friends, open space for birds, ducks, etc.</p> <p>Colourful, bright, artsy, hipster haven, creative, romantic, modern, significant, landmark, monumental, environmental, hidden gem, beautiful riverfront property, celebratory.</p> <p>I think there should be an international theme. Why? Because I walk across that bridge minimum 5 days a week and it is always loaded with tourists and new immigrants. The native Calgarians use it yes, but it is the tourists that are ever present, and new immigrant families as well. Always lots of foreign languages. It would be nice to welcome those people to the area in their own language. Otherwise, you probably know best, but please no "moulded metal cows" .</p>		<p>Eco-Friendly, Eye Catching</p> <p>playful, inviting.</p> <p>calm</p> <p>Urban playground, safe, peaceful, beautiful all year round</p> <p>People coming together.</p> <p>Healthy, Active lifestyle</p> <p>vibrant, lively, urban, beautiful</p> <p>inviting, peaceful, serene, inclusive</p>
<p>PLANNED EVENTS</p> <p>Festivals, events</p> <p>events along the river</p>		

ELEMENTS/CONSTRAINTS TO BE CONSIDERED

CIRCULATION AND ACCESSIBILITY	VEGETATION AND OPEN SPACE
Too much traffic down between 2nd and 3rd avenue and 7th and 8th street SW	people living in West Eau Claire need a quite, peaceful park as their "backyard"
weather: good job in keeping pathways clear of snow after snowfall	more fir trees - more green in the winter months
the space is used by a lot of pedestrians/cyclists - any development should not hinder their enjoyment of access to the pathway	do not feed birds/squirrels
used heavily by all active transportation - this an important commute route, but also a very beautiful space along the river	Make sure that the residents of Eau Claire have an area for them to gather - not just for tourists
bicycle traffic needs space	add more tree elements all the way along the path - some areas barren
connect the peace bridge and 9Ast LRT pedestrian/bicycle bridge to the pilot cycle track on 5st SW	to see what we have be cultivated and appreciated
traffic for pedestrians/cyclists	river beds should be protected from erosion
shared bike/walk pathways can slow bikers	Interaction/views of the city and river should be maximized where applicable, this pathway is a gem in the middle of our CBD and should take full advantage of it.
balance of needs for pedestrians and cycling	access to the river - could it be more like East Village?
increase of cycle community means increase in bike traffic at peak times and congestion at Eau Claire	Environmental impacts on river and river bank
Bike-friendly	I do find some of the older, larger trees have a tunneling effect. The area can be quite scary at night when the lights are not functioning (this has happened on several occasions)
Busy pedestrian, cyclist corridor especially during peak times/season. Key east west pedestrian and cycling access for downtown.	This area is used by many active people, so be cognizant of this still being a "through fare" park.
Cycle and pedestrian intersections at 7th street cycle track, Peace Bridge, LRT ped bridge.	rest areas,(locations to enjoy the scenery and peacefulness) , greenery and flowers, handicap accessible
Improve the segregation of wheeled and non-wheeled traffic.	rest areas, river views, quiet spaces
10th street ped bridge transition is congested, cyclist/pedestrian interference. Very congested at lunch time.	Keep in natural - it is surrounded by a sea of cement !
Speed and safety of bikes passing through over the lunch hour	ground contamination
reroute of bikes	No detrimental impact on the river and environment
Need for better separation of path users	Don't scare away the beavers!
That the pathway is essentially the Deerfoot Trail for commuter cyclists (and recreational cyclists) and when construction begins, that they aren't inconvenienced too much.	Ensure the river bank is high enough to prevent future flooding
traffic flow of pedestrians and cyclists	The Rivers edge needs to be taken care of and people need to be deterred from modifying the river's edge of rocks.
Accessible, area around Peace Bridge becomes very congested	I would like to see all the old, big trees untouched.
access, flow.	flood worthiness / short recovery time
Underground pathways or covered heated pathways to accommodate winter conditions	The waterfront

ELEMENTS/CONSTRAINTS TO BE CONSIDERED

CIRCULATION AND ACCESSIBILITY	VEGETATION AND OPEN SPACE
The existing mess of a path	Flood damage resistant
Parking and accessibility from public transit.	Please don't plant too many new trees near the pathways by the Peace Bridge - as a biker, it's important to be able to see the traffic on the other paths to plan a safe route.
Wider path/better connectivity from the main path to the Peace Bridge Make a clearer linkage to the East Village river walk.	no off leash areas, ensure new condos provide their own pet toilet areas so public spaces are not degraded Keep the trees.
Bikes may be leisure or commuters, but often very fast. How to co-exist with slower riders, and groups of pedestrians?	keep it open
Different user types (commuting to/from work vs. enjoying the river pathway and scenery), lots of bikes, lots of jiggers and walkers	Keep it as natural as possible.
separate cycle commuters from those using the area for pleasure. better for both groups. ease of access for all users	Please keep room for activities like Frisbee, throwing a ball around etc. Keep it looking natural. Let the nature in the area lead the design. the river is main feature, but it needs to look natural not manicured.
Room for future cycle track connection at 5th St W + better interface between Peace Bridge and 7 St W cycle track.	it's nice to have open space for the nearby residents to use, as well as visitors.
Make it accessible to both cyclists and pedestrians.	Respect and highlight the river in the design; listen to the input of Eau Claire residents
The shared use of this zone between cyclists and pedestrians. Need more structure for the path space on how it is used.	preserving the natural beauty of the area even if it becomes more dense with buildings.
Have separate bike/walking lanes. Prefer not to lose run/bike paths. Transit is insufficient to get people there. Especially in the winter. It needs to be a Calgary highlight drawing from all over the city and Airdrie and Cochrane.	don't get rid of trees to install something else, better incorporate them into the design, let the park stay green and grassy and an oasis among the skyscrapers. I would love it to be an extension of Prince's Island in terms of landscaping.
connections to other pathways - widening of pathway to accommodate pedestrian and bike traffic	I feel as though the East Village River Walk has a very urban feel, which is great - but considering that, Princess Island would be best served staying as natural and green as possible!
Paved Footpaths should follow well worn routes, too many muddy paths across the grass	preserve the little natural areas left since the multi billion dollar condo development
Very busy at lunch during week, many of the key path intersections can be congested and somewhat dangerous with people not looking when they walk / run through them	more colourful vegetation, rest area
As cycling is a growing trend, it is important to remember how busy this area is becoming. It is absolutely necessary to build a bike specific infrastructure there as it is one of our cities only east to west connection via bike path Would use the existing trails across the grass to guide your pedestrian & wheeled path planning A lot of bikes are going too fast through this area. I am a biker and ride this area every weekend and love it. Do not get rid of the bikes, only make it separate from the walkers.	Limit or minimize any environmental impact on the area. Do not do anything which will damage the wildlife living there.
I cycle through there occasionally and it's fine except trying to wind my way between randomly placed pedestrians as I come off the Peace Bridge. After that the mix of traffic is fine. At times a bike lane would be nice but it could detract from the area. separate pedestrians and bike paths	make open spaces a little more specific (i.e., turn into small sports field).
Allowing for mixed usage on high-volume pathways, while ensuring the safety and enjoyment of all users. Number of conflicts between bike commuters and walkers, especially crossing the main pathway without looking, which seems to happen on a regular basis	environmental integrity (riverbank and river). we need better access in and out of the river. flood proofing needs to be high on the list, again while maintaining some resemblance to a natural riverbank. or at least a modern natural riverbank More Trees

ELEMENTS/CONSTRAINTS TO BE CONSIDERED

CIRCULATION AND ACCESSIBILITY	VEGETATION AND OPEN SPACE
-------------------------------	---------------------------

It's a major cycle commuting corridor, so don't sacrifice any of the pathway width. It gets crazy busy during rush hours in the summer. Some separation for cyclists and pedestrians would be beneficial if possible. I also know there are some new condo developments being built in the area, don't take away too much of the green space.

Also, there is the cyclist problem. Yes, I said problem. They all speed, nobody is there to catch/reprimand them, and it is only a matter of time before there will be a serious "incident". Set up a photo radar camera for those perps.

The river pathways provide a valuable corridor to commute on bike, without the risk of being hit by a car. I would like steps to be taken to help commuters, such as myself, coexist with people how are simply enjoying the environment.

Make the new Eau Claire very accessible, perhaps using a car/bike sharing platform, or integrate a sound public transit system so people can easily get in and out of Eau Claire. It is very hard to find a parking spot at Granville Island, yet they still managed to make it an incredible place for Vancouverites to visit. Eau Claire needs to do the same.

Green space SW of the peace bridge needs to be better utilized. Take that eyesore of a building (Concord?) out as soon as they leave.

Lots of trees and lots of water and lots of lovely potted flowers as it is now.

ELEMENTS/CONSTRAINTS TO BE CONSIDERED

AMENITIES	SAFETY AND MAINTENANCE	OTHERS
some of the features that were attempted on the River walk - loungers, nice bathrooms (the homeless population rarely venture this far west)	signs warning cyclists needed cyclist ride fast , pedestrians need to always be alert and careful when crossing the path - little kids at risk	remember our climate constraints
need to be careful with things that will distract people		budget
attractive seating close to the river	more police during the festivals	winter time
provide permanent seating for theatrical performances on the Princes Island build a small amphitheater for small performances complete with change facilities provide access to the water - swimming lighting, make the path 24 hour use	enforce bike speed limit enforce poop and scoop law safety lighting could be improved for night walkers and winter use consider old people - there is a Senior's residence at 7th St and 3rd Ave.	Many seniors and aging baby boomers live in Eau Claire, Chinatown and West downtown and use the park and pathway - this should be a population to focus on - how local people can stay active as they age money! Available for everyone to use Don't spend too much money
Leave parking lot intact. I live in Solaire with a west view and the City parking lot must remain as is.		MAKE IT KNOWN!
The helicopter landing area needs to be worked around. There are many residential buildings backing onto the path as well.	the pedestrian bridge under the train bridge can be a little scary on the south side at night	This park should serve the RESIDENTS of the area, not just those that commute through the area or use it for lunch time runs/exercise. People do live here full time, year round.
Lighting, when walking you have to look in both directions for bikers and intoxicated individuals	Homeless, Lighting, Call boxes Keep it safely usable by everyone, from kids, families and seniors through to cyclists Seems to be a gathering area for the homeless. it can be pretty scary if you're on the path by yourself in the early morning and evenings, particularly during the winter. Better police presence or additional emergency call boxes would be appreciated	For a city that wants to encourage inner city living, you should do better to consider the needs of people that live in the area. Like most recent city decisions, I fear the outcome is already decided before public consultation takes place.
The use of this space during the winter. What can be done to increase the use of this space during the cooler months?		Don't spend too much money.
Provide better lighting at night time.		Define the area's purpose, otherwise it will become fragmented, chopped up, and devalued.
Proper lighting	well lit walkways for early morning/late travel to ensure safety	Yes, are the rest of us taxpayers who do not live near the river expected to pay for any future flooding in this area. Is there going to be a surtax on the people living there?
Calgary needs to become more modernized/urbanized Is more public parking needed?	Cater to everyone, keep it really clean, and attempt to constrain rowdiness, a safe place to take children Keeping area safe	Be CERTAIN to keep Drew Farrel off any over-site committee and send her away for a sabbatical in Tibet for 3 years! Mayor Nenshi can look at plans but not interfere.
The area east of Eau Claire Market is really nothing right now. It just sort of ends around where the condos are being built. Lighting, access, mixed use More public washrooms	Noise control, security sites, Keep it safe Public safety consider homeless use of area (i.e.. seats had to be removed from east end river lookouts	
information boards, bikes parking.		
Nothing... the activity space should remain the Eau Claire market area.	safety at night cyclists who do not obey any laws and think they are unaccountable to anyone, please slow down Really would like to see enforcement of pathway rules, I see 99% of cyclists doing whatever they want and their is no one to hold them accountable, there is a posted speed limit, but it is useless if it is not enforced	
Do not develop too much, consider flood prevention strategies or having some natural areas that will assist in flood mitigation.		
Are there public washrooms? More parking at a reasonable price would be an improvement. lighting		

ELEMENTS/CONSTRAINTS TO BE CONSIDERED

AMENITIES	SAFETY AND MAINTENANCE	OTHERS
<p>The Jaipur bridge is a dark zone between two well light areas.</p> <p>increase in skateboard traffic.</p> <p>Parking is terrible.</p> <p>Short summers, long winters. Area should be welcoming in all seasons.</p> <p>Parking. To revitalize the area people need to be drawn from outlying areas.</p> <p>pubic washrooms are missing same as Ottawa's canal, take the kids for a ride and where do you go?</p> <p>Space is a constraint but it seems to be crowded only on weekends. Get that market set up properly and make sure landlords are not gouging businesses.</p> <p>lighting on the bridges.</p> <p>At night, I often jog or walk through the Peace Bridge and Princes Island and the lights on the pathways are incredibly creepy. When I cross the Peace Bridge from Memorial, it transitions to the warm glow of Memorial and the beautiful lights over the river into this cold riverfront pathway that makes me feel somewhat terrified, especially the pathway from the Peace Bridge to Eau Claire market. The path is covered by heavy trees and the light only hits one area, similar to the entire West Eau Claire Park.</p> <p>to busy, need to find a way for multi user activities to flow rather than clash</p> <p>Boat launch</p> <p>Lots of runners crossing that bridge. Maybe do something for them. Do we still have water fountains? Oh....very important: create some seating that is set well back from the pathway for quiet contemplation or private conversations. All the "seating" in the Eau Claire area is right on the pathway. Mercy! Some of us would prefer some "setback" from our fellow human beings.</p> <p>more lighting</p> <p>parking would be nice - so a person can enjoy the area in the evenings and on weekends too. Parking keeps disappearing downtown.</p> <p>Please keep the current overarching structure and theme. This is my favourite part of the city and one of the reasons I live here. There is already misinformation on that mapping tool. Please do not destroy this area with pseudo-modernist over-gentrification.</p> <p>please put lots of room for locking up bikes.... and think about how bikes and pedestrians can mix.... there are many children down there and they should be SAFE also on their own teeny bikes.... everyone should enjoy themselves... should be a destination.... a place for people to gather and feel part of Calgary community</p> <p>the current Eau Claire market is a missed opportunity. What could have been an amazing space to bring Calgarians together is an abandoned, depressing warehouse of random shops, gyms and movie theaters. It is also very dated in terms of design, so the new Eau Claire needs to be future proofed. One of the reasons Eau Claire failed was because of the lack of parking.</p> <p>If there are retrofitted buildings, then they should have interesting angles and no need to be higher than rest of the existing buildings. I will be VERY disappointed if the new Eau Claire Plaza development does not preserve the Barclay Heritage Building, windmill, ped-bike plaza. The new designs look sterile cold. It is suggested there needs to be permanent bike racks right near the path, not far from Eau Claire. YMCA parking is not enough if there continues to be public free events at Eau Claire. Please provide signage to LRT stations....there are visitors to Calgary and to this area. I don't agree having any bars along this stretch. The residents will not like it. I live on 2nd Ave SW and we've had problems with bar/pub set-up. Instead...a cafe or ice cream place or bakery (would work for winter). :) Perfect.</p> <p>Helicopter pad</p>	<p>It's important to keep off-leash areas a safe distance from bicycle paths. Off-leash dogs are unpredictable and create a danger to themselves and pathway users.</p> <p>Safety should be first priority. DI and surrounding areas are dangerous.</p> <p>safety from falling to the river, safe walk way, more colourful vegetation, rest area</p> <p>Just safety in the winter - keeping the paths clear of snow and ice, sufficient lighting for when it's dark, etc.</p> <p>Also, security. I don't want to see one more broken pane of glass on that bridge. Catch them, fine them, jail them.</p> <p>keep park clean</p> <p>Water safety, security of people using space,</p> <p>CCTV Cameras</p> <p>think of the night lighting and activities that promote safety and peace/quiet in the Neighbourhood.</p>	
MINIMIZE DEVELOPMENT		
<p>avoid more commercial or residential development - concrete condos</p> <p>avoid building condos so close to river</p> <p>commercial use should be kept to a minimum - and if so, the scale and tone of businesses should be suit a park space - cafes, small food markets etc.</p> <p>using natural materials and well designed details for park infrastructure</p>		

ELEMENTS/CONSTRAINTS TO BE CONSIDERED

AMENITIES	SAFETY AND MAINTENANCE	OTHERS
<p>easy on the paving + asphalt</p> <p>too much development and not enough infrastructure (roads)</p> <p>hate to see the area - re-designed to wealthy owners of new developments being planned for area - one of the nicest things of West Eau Claire Park is that it is so often used by so many demographics</p> <p>leave it the same as is</p> <p>the city (downtown) needs open natural space</p> <p>preserve all existing parkland in Eau Claire</p> <p>keep it simple - no more bad examples of urban design</p> <p>simple green space and path widening is enough with good lighting</p> <p>I hope the new condo developments don't section off too much public space.</p> <p>keep the budget in mind, leave place alone</p> <p>no more condos please!</p> <p>I'm sure the residents of Eau Claire will bring up with issue of parking, traffic and noise. But this comes with the territory of living downtown, so I do not see it as much of a problem</p> <p>Please DO NOT give any of the precious area to developers. The area is a god-send to people who work in the area for their lunch time walks, for residents and for families and others who come to the area on weekends and holidays</p> <p>I don't think that there should be high-rise multi-use bldgs. that close to the pathway or river - there should be a stepping back from the river element to development.</p> <p>Too much development close by</p> <p>Absolutely no sale of any part of the current park to private developers.</p> <p>just fine as it is</p> <p>Keep the green spaces, don't fill it with condos</p> <p>West Eau Claire Park is on the north side of Downtown, so it's important that any changes to the area recognize the need to allow daylight to reach the Park and that wind-tunneling effects are not created.</p> <p>Leave this area alone. IT DOESN'T NEED CHANGING.</p> <p>I've heard that a developer is seeking to buy park land - I don't think Eau Claire parkland should be sold.</p> <p>with al the new apartments coming to Kensington the riverbanks will be busy enough without adding more crap</p> <p>No more condos or other developments. They're cluttering the area</p> <p>to not allow any sort of building development to interfere</p> <p>COMMERCIAL</p> <p>don't bring lots of vendors to this space</p> <p>have rental place for bikers, roller blades</p> <p>ART</p> <p>bridges crossing to memorial could be electrifies and made artistic</p> <p>Graffiti</p> <p>ominous architectural features are over kill - poppy plaza - not people friendly</p> <p>more local Calgary art support via musicians and public art projects</p> <p>More artistic nodes.</p> <p>Primary public art installation locations</p> <p>Any history of that area should be used if possible</p> <p>NO WESTERN COWBOY THEMES OR HORSE OR COW SCULPTURES! I am a third generation Albertan and I grew up in Calgary, but enough with the folksy cow/horse art. The bridge is modern and everything around it also needs to be modern. Think Luis Barragan (famous Mexican architect and landscaper). No kitschy Calgary stampede stuff.</p> <p>Include historical info in the park about the Eau Claire sawmill and the log spillway which ran thru where the park is now.</p>		

ELEMENTS/CONSTRAINTS TO BE CONSIDERED

AMENITIES	SAFETY AND MAINTENANCE	OTHERS
<p>Just think of what happened last year, if expensive pieces of artwork or other expensive changes are made to the area and we get a flood that is up to or surpassing levels of 2013, it is a less expensive option with gardens then wrecked metalwork. Gardens will come back, metal artwork rusts and has to be replaced at a higher cost. If art should be incorporated, make the artwork BELONG and FLOW in the area. I love the artwork in the area that emphasizes the aspect of the Bow River and how it makes up a huge part of the city. Don't take it away or change it.</p> <p>PLANNED EVENTS</p> <p>Eau Claire needs more culture! Free live music, bike rentals, art exhibits etc.</p> <p>this area should be used for cultural space once there are not many in the city/ otherwise Calgary will turn into an empty nut shell</p>		



WHAT IS GREAT ABOUT THE PARK?

LEGEND

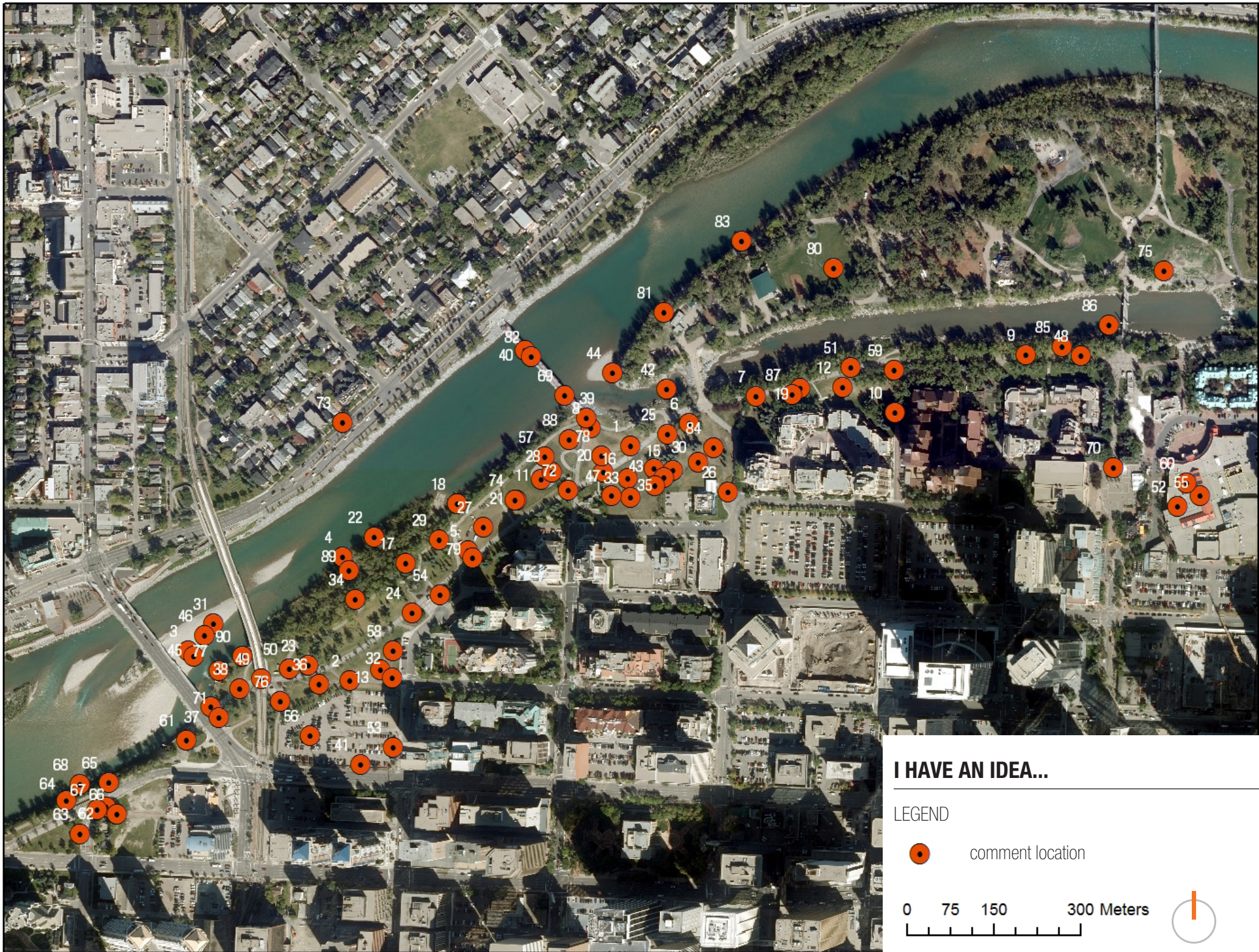
 comment location

0 75 150 300 Meters



GREAT	
LABEL NUMBER	COMMENTS
1	The Peace bridge has been an amazing addition to the Eau Claire park area. I'm amazed at the number of people this draws for wedding/graduation pictures etc. Anything to improve the area directly offsetting the south entry to the Peace bridge would be a
2	The walk down this path is one of the nicer things to do in Calgary - don't change it! :-)
3	A Great Place!
4	Love the Peace Bridge!
5	Keep this parking lot. Forever.
6	I made out with a girl on this park bench
7	I really like this archway, but I've never found a sign explaining what it is
8	Most beautiful and peaceful place to run, walk, and bike. I use this path daily for 4 months a year.
9	I go out of my way to use this, the loveliest bridge in Calgary.
10	Great spot to stop for a lunch picnic
11	<3 Peace Bridge
12	The only really good place to park if you have a car
13	love this walk
14	Love the connectivity from the peace bridge to the cycle track
15	Regardless of the coat and bad press, the Peace Bridge has become an icon for Calgary :).
16	Great job with this area!
17	I value the parking as I tend to drive here from far away and there's little on-street parking
18	I love the Peace Bridge too. So unique and beautiful.
19	FROM THIS SIDE THE VIEW IS GREAT
20	love the trees that line the path
21	The water park is great!
22	Dedicated biking/walking lanes through this entire area could help with congestion and safety - similar to river path near Edworthy Park.
23	Prince's Island Park is great.
24	Add a giant parkade to provide more DT parking
25	This is a nice spot to sit and read and watch the world go by
26	Great connection, love this bridge
27	Love the water park
28	my family enjoys having this open space here.
29	keep this area as is
30	love this open green space that is otherwise lacking in the area
31	as a resident, i think this should be maintained as open, flexible space, not cluttered up with work out space for downtown workers during their lunch hour. it should meet the needs of people that are in the area 7 days a week!
32	don't change a thing
33	I love the secondary path here for walking and running.
34	This field is well used by people throwing the ball around . Keep it as is.

GREAT	
LABEL NUMBER	COMMENTS
35	Love River Cafe and their micro-garden!
36	River surfing the new wave is a great amenity for Calgarians!! Can we make this permanent providing a structure like this: http://www.surfanywhere.ca/
37	This lane of trees is my favourite part of Calgary.
38	attractive, acoustically great bridge
39	This parking is badly needed, I hate that they are developing in these two lots
40	Love the ice cream truck and sausage truck in the summer, nice to go to for a break from work, or at lunch
41	Keep this area open and flat for informal sports. There is no other active area like it in west Eau Claire.
42	Please don't mow down trees the way you did for Riverwalk!!! I'm still mad about that STUPID MOVE!

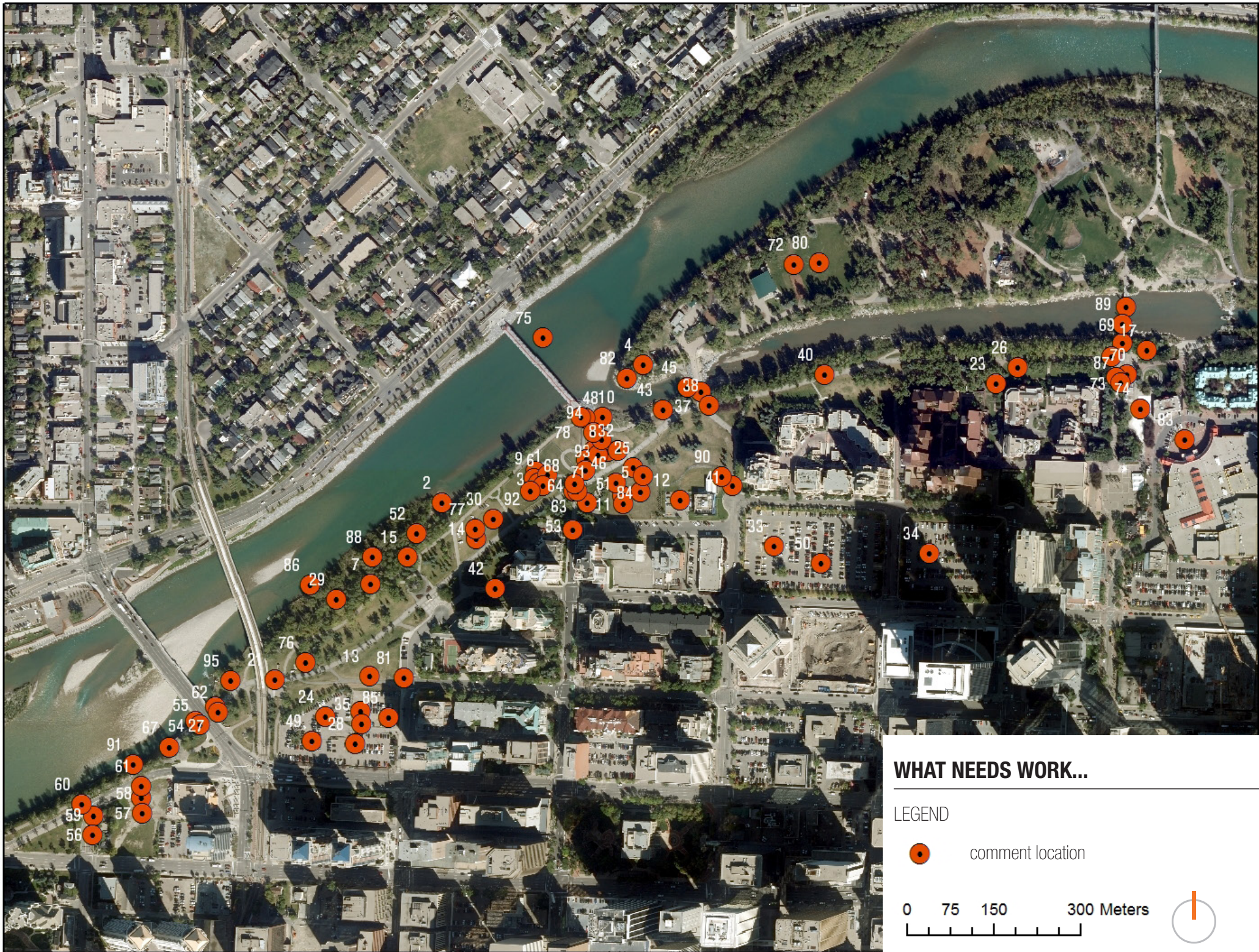


I HAVE AN IDEA...	
LABEL NUMBER	COMMENTS
1	This general area is probably the most used in terms of the number of people that pass through. One general comment for the entire Eau Claire park is that there is essentially no lighting (or it is very poor), so minimal people are around once the sun se
2	A lot of people access 4th Ave via this trail/through the parking lot. This access should be improved
3	Can we build access to this gravelled area? I feel this would be a great spot for launching/removing rafts from the river.
4	Can we make this a stepped and lighted area like in the east village? Too many homeless here... it's a safety risk.
5	Lighting needs to be improved along the entire pathway for runners and commuters, especially in the winter when it gets dark early.
6	Why not extend the beautiful trees, hanging planters, etc further west?
7	I really like how the East Village path has separate bike nad pedestrian lanes. Useful here too?
8	Absolutely love the Peace Bridge, but the landscaping and access on its south side are poor.
9	Pathway is extremely busy through here. Separation, like on RiverWalk, for bicycles and walking is needed.
10	Better pathway access to 5 St and the new 5 St cycle track
11	I have seen helicopters use this a few times in 2 years. Perhaps surround the pad with some trees, hedges, or landscaping to meet folks' desires for beauty?
12	Many games are already played here, formalising the space would be nice.
13	Bike repair mobile shop is located here...how about an area that allows food trucks to park there as well....make it like a destination for trucks to park and people to gather for lunch
14	Add a boardwalk out over the river with lounging areas and with an outdoor patio pub.
15	outdoor gym area?
16	Could a Slackline Park be built here?
17	Add emergency buttons like in East Village riverwalk?
18	River access.
19	Separate bike lanes, improved lighting.
20	Improve lighting.
21	Outdoor gym.
22	Improve safe river access
23	Add water fountain would be useful.
24	I'd appreciate more places to sit. Especially on weekends, seating is taken. In the shade preferably.
25	More trees. More seating.
26	This might be a good place to allow food trucks on weekends. We need places to get refreshments along the pathway.
27	My co-workers and I workout along the riverwalk as often as possible and an outdoor gym anywhere along here would be utilized greatly and helps promote active and healthy lifestyles for Calgarians.
28	If we have to keep a helipad in the area, could it at least be relocated to a less prominent spot? I would like to see the area near the new bridge be greared more towards the general public like an outdoor gym and/or playground.
29	It would be great to have a divided pathway along this side to connect to the East Village Riverwalk. It would hugely improve safety for cyclists and pedestrians.
30	Add evergreen trees everywhere so that the area remains green during the winter.
31	Remove all gravel and rocks to create a more open river. Rocks can be used to fortify river banks in other parts of the city.

I HAVE AN IDEA...	
LABEL NUMBER	COMMENTS
32	Straighten bike trail and align for smooth access with 3rd Ave and connection to 7th Str bike lane.
33	Cover fully with evergreen trees to get more of an inner city forest feeling.
34	Fence off area covered with trees to provide unwanted access e.g. by homeless.
35	I would suggest a nice, big playground for kids and incorporate a bunch of outdoor fitness equipment
36	Flatten out sloped area for improved visibility and safety.
37	Fence off waterside for biking safety and to prevent unwanted access to water
38	Lengthen the slope and make it more gradual
39	Not clear how cyclist and peds should interact here. Delineation like the north side would help a lot
40	Love the peace bridge, but there are always people walking in the bike part of the bridge and they always look surprised when you bike across. Could we have some better signage indicating that the center lanes are for bikes.
41	Lots of people seem to have a problem with homeless people existing, lets build some affordable housing in this lot
42	A fountain/water art with decorative lights will make the area more inviting into the night
43	Great space to be utilized for an outdoor pool/artificial beach or sand volleyball courts
44	An artificial urban beach would bring this space to life
45	Urban beach
46	a mad made beach with access would be amazing here
47	add a restaurant with an awesome large patio
48	Separate the pedestrian and cycle traffic here. There is too little room on the existing pathways
49	Widen the approach to the pedestrian bridge here. The space is quite narrow when busy.
50	A stop sign here for pedestrians and cyclists entering the main pathway from the little pathway would be great.
51	Adding a separated bike lane would be great!
52	This area needs to be redeveloped. A mixed use, higher density facility would help. This is a prime location but Eau Claire Market is usually dead.
53	How about creating a public tennis court/sports playground here? More trees needed too. Lots of condos and apartments nearby, they will appreciate. Please, no more condos in the area.
54	Relocate garbage bins further away from benches. No one likes sitting next to a bin
55	indoor playground a good idea, but needs to be kept up
56	Build a giant parkade
57	I understand that the helipad most likely has to stay due to gov't ownership. Please dress up the fence surrounding it so it looks more attractive
58	How about a Community Garden here?
59	Add a cafe - nothing exclusive, but nice outdoor eating space
60	Market could be a great public space - how about weekend farmers market
61	This area West of the Louise Bridge needs maintenance attention. The caged rock wall are being destroyed. The sitting area is secluded and not well maintained. The grass on either side of the path way and the wooden dividers are rotting
62	This area (Owned by the City Transportation Department) is neglected and needs to be properly maintained. it is used by transients as a camping area by transients. The bush needs to be removed or as a minimum the under growth needs to be trimmed to impro

I HAVE AN IDEA...	
LABEL NUMBER	COMMENTS
63	Side Walk needed. There is no proper side walk on this segment of 10th St.SW for residents to safely access the River walk
64	The Wire fence from 11 St SW to the Louise Bridge should be replaced with the railed fencing similar to fence recently installed further west of the path way.
65	Replace wire Fence with railed fence
66	NO Entry signs should be improved as Traffic often proceeds west on this ally. It is a blind corner and a safety hazard.
67	Street Light need to improve safety
68	The May 2007 Centre City Plan contains an URBAN Edge to BOW River at this location. Such a facility is need for WEST END residents to similarly enjoy the River as residents of Eau Claire, China Town and East Village.The DTW community is the highest dens
69	Peace Bridge is fantastic but already at capacity. Need bike symbols the entire length on the bike section, as no one seems to get it.
70	It is critical to keep this 3rd street corridor continuous from the Jaipur Bridge to 3rd Ave. I have seen redevelopment plans that would put a skating rink or something in the middle. This must not happen!
71	Extend the Scope of the Program to include area up the 11st.ST SW as a minimum. This area needs to be upgraded to the current stand as West Eau Claire. Further enhancement to west Eau Claire would provide a serious imbalance to the park space in DOWN Tow
72	Need signage here to direct people to the Peace Bridge. It isn't that obvious from the main promenade pathway.
73	Need more gathering place by water and better merchants
74	Is there public information about the development of these parcels? How will developer plans be integrated into the broader PE plans
75	While outside your geographic area, this space needs some help to bring more people into the area safely. Consider signage programs or allocating the space for public programming (x-fit and more)
76	is this park space or a development parcel? If imagined as condos, how will the development integrate into the realm?
77	Provide amenities for river surfers and viewers (seats, change areas, board holders)
78	I like that people use this space to lounge and enjoy the sun, but agree some better landscaping would be an improvement
79	A measured distance 500 metres to calibrate bike computers
80	Put an adult exercise urban playground here
81	ALL THE ISLAND AREA THAT BORDER THE BOB RIVER CAN BE DESIGNED AS A WALKING ZONE WITH COFFEE SHOPS, SMALL RESTAURANT, ART DISPLAY, SMALL BOUTIQUES. A PLACE WHERE IT WILL BE FUN TO GATHER AND ENJOY THE VIEW OF THE RIVER ALL YEAR ROUND.
82	post busking time limits/rules. when i try to busk here, the spot's often taken, for hours, by the same person. max should be one hour
83	more big rocks to sit would be nice
84	making this worn natural path in the grass into an actual path would greatly help us people with wheels.
85	Picnic tables in the shade would be nice - to go have a picnic lunch from work, in the summer. Close by, enough tables so you can find one
86	Tell people to stop feeding the ducks and geese
87	The present pathway design is poor because it does not separate cyclists and walkers. Where possible, add a separate asphalt pathway for cyclists. This would benefit both groups.
88	Add numerous picnic tables throughout the park.
89	The trees and shrubs here both provide good bird habitat, so please do not clear the entire area out due to security concerns.

I HAVE AN IDEA...	
LABEL NUMBER	COMMENTS
90	Add an interpretaive display here about the Eau Claire sawmill. Most of the park area was the site of the sawmill's log channel and the old log pilings here are all that remains.



NEEDS WORK	
LABEL NUMBER	COMMENTS
1	The helicopter landing area is something that I have not seen used in the 6 years I have been going to Eau Claire park on a daily basis. The large area this consumes when including the fenced off area interrupts the flow of the park and it would fantast
2	Some small changes could be made to improve the presence of this area. People are rarely here, but when they are they generally have a bottle of Big Bear in their hands
3	Do we really need this helicopter pad?
4	This end of the Island is under-utilized. I think it could be cleaned up and made into desirable location
5	Feels like a big open field which is never utilized.
6	Helicopter pad is a waste of valuable space.
7	I usually feel unsafe on this side of the pathway during non-peak hours.
8	This area could be better utilized.
9	Get rid of this. It is an unused eyesore and waste of space.
10	More trees needed here
11	Trees needed here
12	Get rid of these buildings and parking
13	More trees. I often see maintenance vehicles driving in here too
14	More trees
15	This is dangerous space - narrow pathways and poor lighting make this area popular with drug-users and the homeless
16	Jaipur Bridge sucks...too small
17	The Jaipur Bridge is too narrow for current volumes, making walking and cycling more difficult and sometimes dangerous.
18	Very poor sight lines for bicycles. Considering the high-volumes, this should be improved.
19	Many desire lines run through here. Additional pathways should be provided across the green space.
20	Bad sight lines at a busy pathway intersection.
21	Very poor lighting under the CTrain bridge.
22	Parking lot harms the perception of safety in the area.
23	Terrible pathway connection into the downtown.
24	Future development can't wipe this off the map fast enough.
25	better use needed of this space
26	It's difficult to cycle here among pedestrians. Separate paths like in East Village would be good
27	Safety, lighting
28	Remove or create underground parking. Eyesore.
29	Homeless issues.
30	More trees, landscaping, beautification, lighting.
31	Remove helipad and relocate to a rooftop. Beautify and reclaim this space.
32	Trees, landscaping, more seating, beautification.
33	Remove parking lot, develop
34	Remove parking lot, develop
35	Create underground parking

NEEDS WORK	
LABEL NUMBER	COMMENTS
36	As others have noted, the bike/pedestrian conflict here is high. At the very least there should be a dedicated bike path connecting the bridge to the cycle track, with signs/paint indicating pedestrian crossings.
37	better lighting at nights and maybe an area for vendors or food trucks
38	congestion
39	congestion
40	this part of the path is very congested at peak times
41	Signage for bikes to slow down / alert vehicles to be aware of pathway transition to road
42	Not the greatest transition for bikes coming from the road. Most bikes cut through the grass
43	This curve in the path here is terribly icy in the winter, and terrible for congestion in the warmer months
44	Needs a bike lane heading past the YMCA.
45	Why doesn't the Bow flow through here? The water gets very stagnant and smelly in the late summer. :(
46	Too many Hippies
47	Constant Klan rallies
48	Way too congested with bikes, people, strollers, etc in conflict
49	Make this into a green space, with underground parking below
50	Remove parking lot and develop as green space/public space
51	Better use for this space
52	Safety issues, landscape so this area is more open and feels safer
53	this cycle track is a waste of money and space. it's on the wrong street.
54	Lights under bridge needs to be repaired
55	Gravel needed on south side of path way under bridge
56	Back ally need gravelling large pools of water prevents pedestrian access to River walk. This is the only path way for folks from 10th. St. to access the path way.
57	This is badly in need of some TLC. At a minimum and at low cost some top soil can be placed here and a sprayed with grass mixture. The back ally should be fenced to prevent traffic from cutting through. to Bow Trail. This is a safety issue that the City should address
58	Fence needed to restrict traffic for safety issue
59	This temporary side walk needs to be improved
60	Between The Traffic Barriers and Bow Trail always has tall weeds growing that needs to be controlled. It obscures visibility and creates a traffic hazard. It should be concreted.
61	Side walk needs Repairing
62	This area needs grooming
63	NEED STOP SIGN
64	NEED STOP SIGN
65	Contractor Needs to Weed Grass
66	Contractor needs to weed grass
67	There are often people sleeping and drinking on this bench that is tucked away. Not great for personal safety.
68	I agree with the others, get rid of helipad. An eyesore and complete waste of precious riverside park space.

NEEDS WORK	
LABEL NUMBER	COMMENTS
69	Jaipur bridge needs lighting! It is one of the busiest pathway connections in the city and has no lights.
70	The ice cream and sausage trucks are parked here 365 days a year and are never open. Why do they get such premium space? Their presence blocks passage behind the three small square buildings and they add nothing to the park. Get rid of them.
71	Not sure why a hill was created here. It is sparse and would benefit from some decorative gardens. Might be able to reduce congestion on bridge for photos by adding scenic backdrops here.
72	Please do not add any more festival capacity to the island. It is already closed to the public for at least 6 weekends in the summer because of ticketed events. This excludes people and the noise is unacceptable to adjacent neighbourhoods.
73	This spot has a terrible drainage problem. When it rains there is always a puddle deep enough that detour is required. Please re-shape so that water drains off to the grass at the side or add permeable paving or something.
74	The water park is not a good use of space. only open a few weeks a year, is little used and blocks the desire line from jaipur bridge to eau claire market. I'd be happy to see it gone.
75	Please have posted speed limits for cyclists, they seem do whatever they want, because noone is enforcing a speedlimit
76	I was almost mowed down by a cyclist entering the pathway from the lane that branches here
77	Too many people using this as a soccer field during their lunch hour- the grass is ruined and is very muddy when it rains; is there something that can be done to stop using it as a soccer field?
78	as a older pedestrian, I dislike bikes speeding by
79	Trees are nice but Good view on river
80	Please make less festivals in the park. It needs more trees, not festivals.
81	Needs to be a 4 way stop
82	Used to be one of the nicer views. To get to this bench, you now have to walk through a city works yard, and the view is limited. It suffers from the same problem many dt benches have: trees planted in front of the bench. Who installs a park bench and t
83	Eau Claire Market failed on every metric. Keeping it in its current form is an insult to any DT development. Local farmers are not willing/able to pay market rent for a dt location. Half the site is parking. For who? I live DT, I would be walking here, i
84	The City should make clear that there are plans to build two buildign (14 and 18 stories) in this part of the park (the Concord)
85	ugly, awkward, in the way lot.
86	could use more places to sit. large rocks right on the coast?
87	instead of or in addition to a water park, a shaded seating area would be nice.
88	Could we not remove the lowest 6' of branches, so the underbrush is clear, paths are visible, and the trees remain?
89	make cyclists dismount and walk across the bridge - too conjested and dangerous with bikes whizzing by
90	Stop sign for cyclists. So they don't just fly out onto the road.
91	All of caragan bushes should be removed from along the top of the retaining wall so that there are unobstructed views of the river.
92	Relocate the helipad elsewhere in the downtown; perhaps on CPR land or on top of a building. There must be many other locations which would satisfy Federal regs.
93	Remove the hill because it obstructs views of the Peace Bridge.
94	There is unfinished business here: a classy entrance to the bridge is necessary.

NEEDS WORK	
LABEL NUMBER	COMMENTS
95	Remove or modify survey monument here. Its present design is unnecessary and an eyesore.