



2023 Perspectives on Calgary Survey: Housing Affordability and Affordable Housing

Final Report
September 2023

Prepared by: The Corporate Research Team
Customer Service and Communications
The City of Calgary
research@calgary.ca

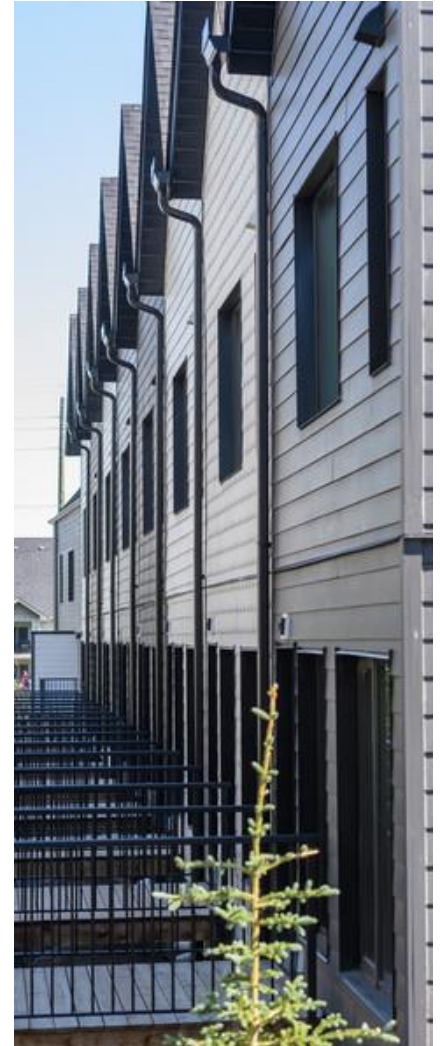
Acknowledgements

Land Acknowledgement

In the spirit of Reconciliation, we acknowledge that we live and work on the traditional territories of the Blackfoot Confederacy (Siksika, Kainai, Piikani), the Tsuut'ina, the Îyâxe Nakoda Nations (Bears paw, Chiniki, Goodstoney), the Métis Nation (Region 3), and all people who make their homes in the Treaty 7 region of Southern Alberta. We acknowledge all Indigenous urban Calgarians who have made Calgary their home.

Table of contents

Background and methodology	4
Key findings	5
Detailed findings	6
Housing affordability	7
Housing Affordability Task Force recommendations	9
Respondent profile	24
Contact	28
Appendix: questionnaire	29



Background and methodology

Background

The City of Calgary surveys Calgarians about their opinions, preferences, and attitudes in order to help support data-driven City decision-making. The Perspectives on Calgary Survey is one of the ways by which data are collected, and this survey is conducted multiple times throughout the year.

For this wave of research, The City's Corporate Research team partnered with the Housing Solutions division of the Partnerships Business Unit within the Community Services department, to understand Calgarians' perceptions of housing affordability in Calgary, including Calgary's Housing Affordability Task Force policy recommendations.

Methodology

The survey was conducted by Advanis* from August 8th to 18th, 2023, with 500 Calgary residents aged 18 and older via a telephone survey. The average time to complete the survey was 17 minutes.

The survey was conducted using numbers from both landlines (21%) and cell phones (79%) to obtain a random and statistically-representative sample of Calgarians. To ensure the data was gathered from a representative group of Calgarians, sample quotas were set by age, gender, and city quadrant. For a full profile of survey respondents, please see pages 32 to 33.

The margin of error for the total sample of n=500 is ± 4.0 percentage points, 19 times out of 20 (though smaller among subgroups of the total). Data were weighted based on the Statistics Canada 2021 Census of Population for age, gender, and city quadrant. Although the results are weighted, sample sizes for each question represent the number of actual respondents (i.e., unweighted n).

To note, some bar charts in this report do not add to 100% due to rounding.

*A third-party research company contracted by The City

Key findings

The majority of respondents consider both housing affordability* and affordable housing to be significant issues in Calgary today**

- 94% rate housing affordability as an issue, with 72% rating it as a significant issue
- 88% believe that affordable housing is an issue, with 66% rating it as a significant issue

Overall, the majority of respondents support the Housing Affordability Task Force (HATF) recommendations⁺

90% bringing together partners in the housing sector	89% ensuring more people have a safe place to call home	84% making more City-owned land available for below-market housing across the city
83% building more housing across the city, including allowing for a variety of housing forms	82% increasing investment to support affordable housing providers	75% ensuring affordable housing meets the needs of equity- deserving populations

*The amount a household pays for housing in relation to their total income.

**Housing projects that are often subsidized by government or other agencies.

⁺Descriptions of recommendations are abridged summaries. For full definitions presented to respondents, see pages 12 to 22.



Detailed findings



Housing affordability

Perceptions of housing affordability

The vast majority (94%) consider housing affordability to be an issue in Calgary today, with 72% rating it a significant issue. The majority (88%) also consider affordable housing to be an issue, with 66% rating it as a significant issue.

Perceptions of housing affordability and affordable housing in Calgary

■ Significant issue ■ Somewhat of an issue ■ Not really an issue ■ Not an issue at all ■ Don't know/Prefer not to answer

Housing affordability



Is an issue

94%

Affordable housing



88%

Q. The next question is about housing affordability and affordable housing in Calgary. By housing affordability I'm referring to the amount a household pays for housing in relation to their total income, while affordable housing refers to housing projects that are often subsidized by government or other agencies. For each of these, please tell me if it is a significant issue, somewhat of an issue, not really an issue, or not an issue at all in the city of Calgary today.

Base: Valid respondents (n=500)

Labels <4% not shown



Housing Affordability Task Force (HATF) recommendations

HATF recommendations: question methodology

Respondents were asked to rate their level of support for each of the six Housing Affordability Task Force recommendations. The recommendations were presented to respondents in a randomized order, and those who did not “strongly support” a recommendation were asked to explain the concerns they may have with it.

Before answering these questions, respondents were read the following preamble:

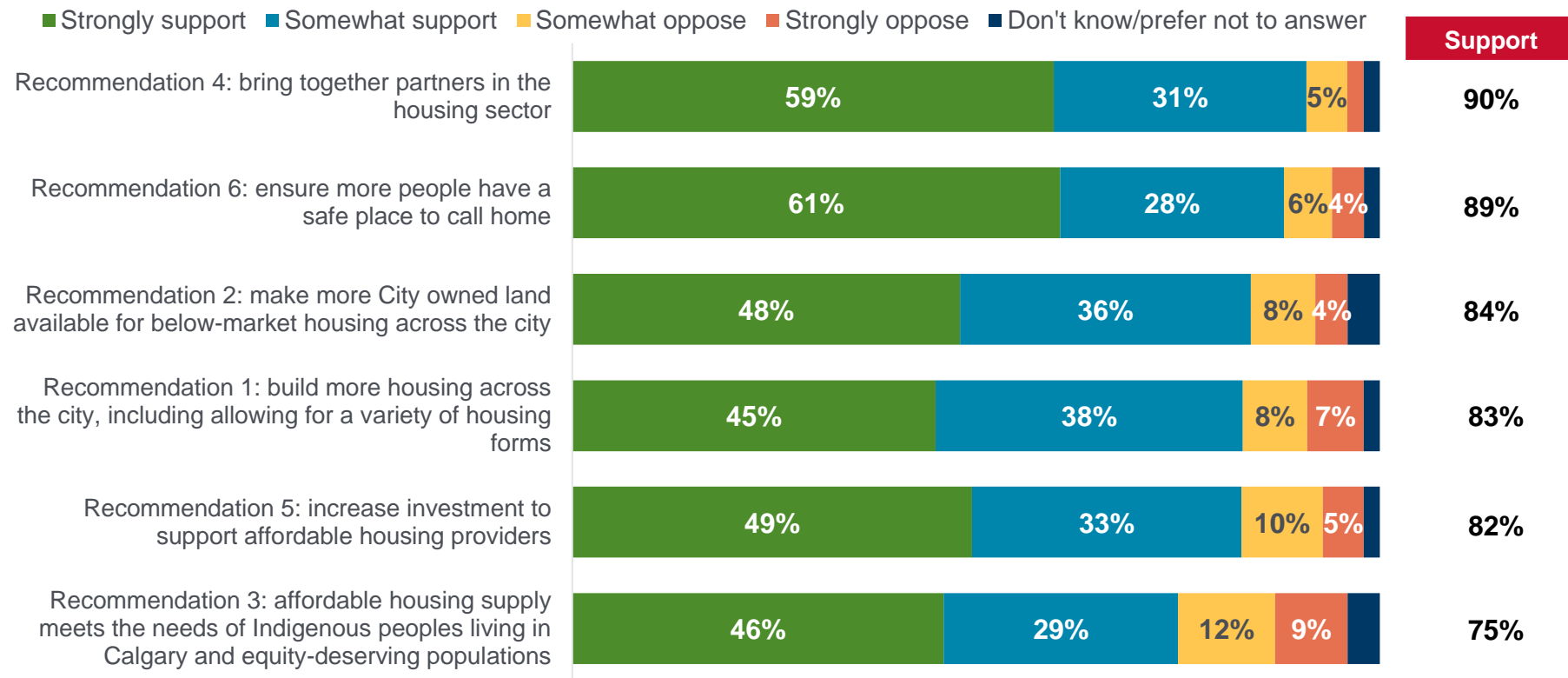
“Calgary’s Housing and Affordability Task Force recently presented several recommendations related to housing policy in Calgary, from homelessness to market housing. The Task Force was made up of 15 members who made these recommendations to City Council.

The next questions are about your opinions on the Task Force’s recommendations.”

Summary of perceptions of HATF recommendations

Overall, the majority support each HATF recommendation. Recommendations 4 and 6 garnered the most support (90% and 89%, respectively). While still supported by the majority (75%), recommendation 3 saw the lowest level of support.

Level of support or opposition towards HATF recommendations*



Q. [Explanation of recommendation.] To what extent do you support or oppose this recommendation?

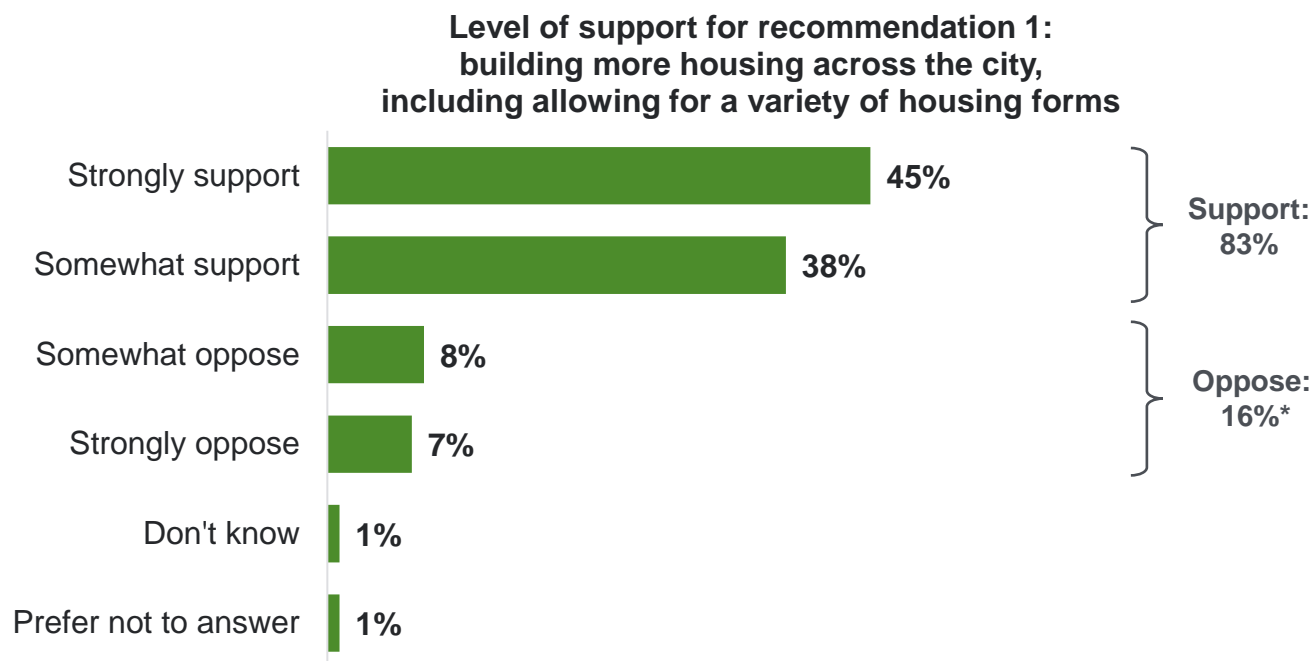
Base: Valid respondents (n=500)

*Chart labels are abridged summaries of each recommendation. For full questions, see pages 12 to 22.

Labels <4% not shown

Recommendation 1: building more housing across the city

The majority (83%) support the recommendation to build more housing across the city, including allowing for a variety of housing forms, with 45% strongly supporting it.



Q. The Task Force recommended building more housing across the city, including allowing for a variety of housing forms, such as a single detached home, semi-detached and rowhouses on parcels that currently only allow for a single detached home and 1 suite. This doesn't mean that all parcels will redevelop, but if a property owner wants to redevelop, there are opportunities for more housing choice whenever redevelopment becomes an option for that property owner. It also includes creating incentives for more affordable market and non-market housing. To what extent do you support or oppose this recommendation?

Base: Valid respondents (n=500)

*Rounding

Concerns with recommendation 1: building more housing across the city

Respondents that did not “strongly support” recommendation 1 (n=277) were asked what concerns, if any, they had with it. Concerns related to population density, overcrowding and/or infrastructure was the top response (28%).

Concerns with recommendation 1	% (n=277)
Population density / overcrowding / infrastructure concerns	28%
Opposed to recommendation (in general)	10%
Parking concerns	10%
Concerns about people (residents, homeowners, homebuilders, etc) taking advantage of the system	8%
House prices / market value concerns	6%
Concerns about livability of new housing	4%
Concerns about costs / tax increases / loss of assets for The City	4%
Concerns about new housing actually being affordable	4%
Policies should focus on addressing housing affordability for other demographics / everyone	4%
Safety concerns	4%
Other	3%
Don't have concerns / agree with recommendation	13%
Don't know / need more information	19%

Q. What concerns, if any, do you have with this recommendation?

Base: Respondents that did not “strongly support” recommendation 1 (n=277)

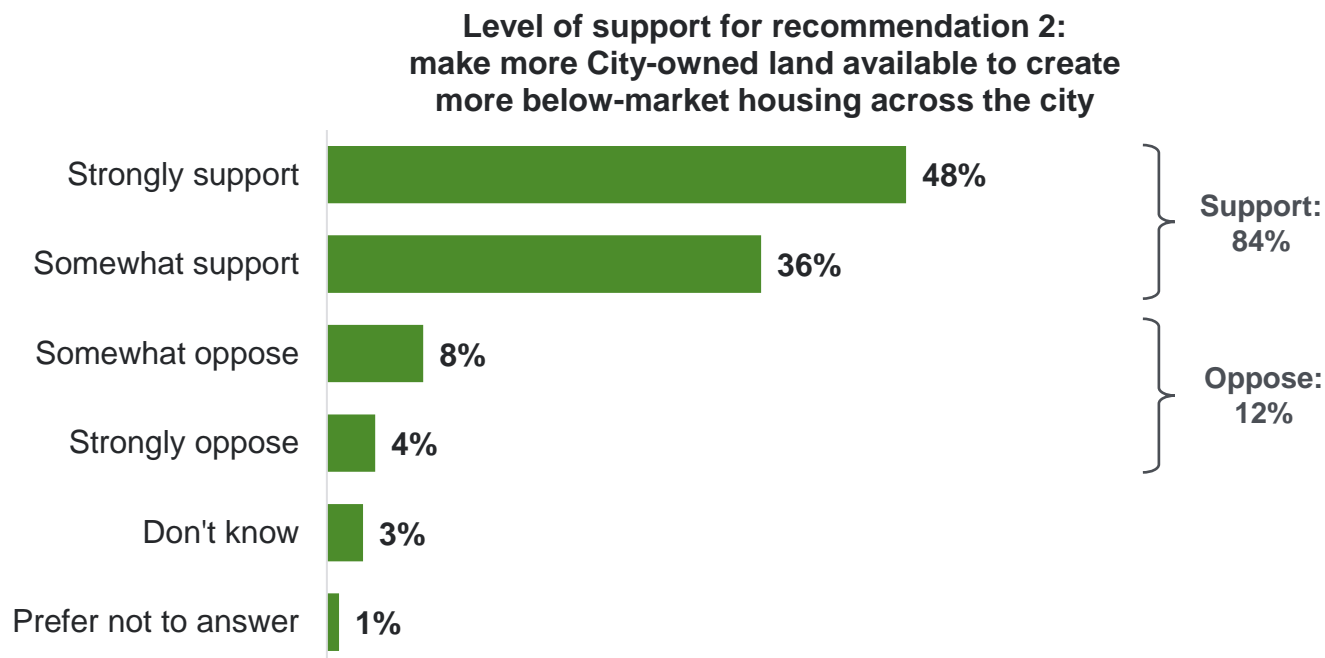
Open-ended comments

Multiple responses allowed

Mentions <3% not shown

Recommendation 2: making more land available for below-market housing

The majority (84%) support the recommendation to make more City-owned land available to create more below-market housing across the city, with 48% strongly supporting it.



Q. The Task Force recommended making more City-owned land available to create more below-market housing across the city. Tasks to achieve this would include using existing City land or providing funding to create non-market housing, identifying City-owned land that can be used to build new affordable housing units, and making it easier for non-market housing builders to access City-owned land. To what extent do you support or oppose this recommendation?

Base: Valid respondents (n=500)

Concerns with recommendation 2: making more land available for below-market housing

Loss of green spaces (16%) and costs, tax increases or a loss of assets for The City (12%) were the top mentioned concerns of respondents that did not "strongly support" recommendation 2 (n=247).

Concerns with recommendation 2	% (n=247)
Loss of green spaces	16%
Concerns about costs / tax increases / loss of assets for The City	12%
Population density / overcrowding / infrastructure concerns	9%
Concerns about people (residents, homeowners, homebuilders, etc) taking advantage of the system	7%
Concerns about implementation / feasibility	7%
City-owned land should be used for other purposes (schools, businesses, recreation, etc.)	7%
House prices / market value concerns	4%
Policies should focus on addressing housing affordability for other demographics / everyone	4%
Concerns about new housing actually being affordable	3%
Opposed to recommendation (in general)	3%
Lack of trust in government / ability of government to solve issue	3%
Government should have other priorities	3%
Other	4%
Don't have concerns / agree with recommendation	9%
Don't know / need more information	25%

Q. What concerns, if any, do you have with this recommendation?
Base: Respondents that did not "strongly support" recommendation 2 (n=247)

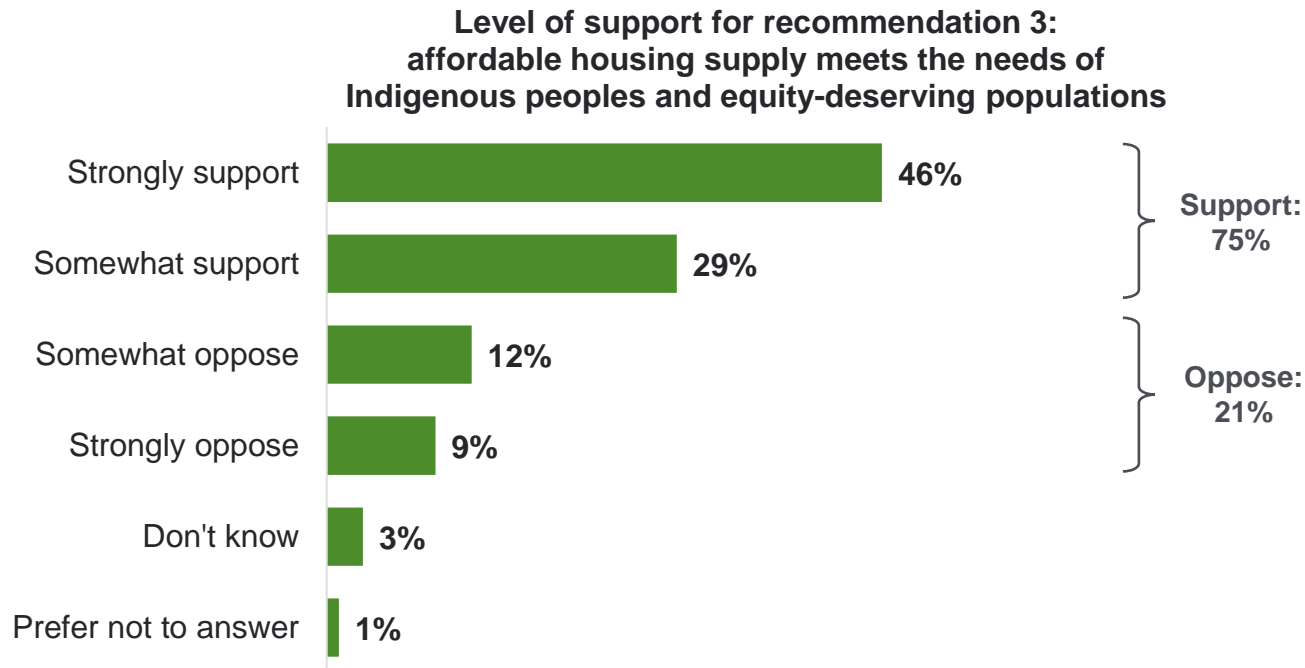
Open-ended comments

Multiple responses allowed

Mentions <3% not shown

Recommendation 3: supply that meets the needs of equity-deserving populations

75% support the recommendation of ensuring the affordable housing supply meets the needs of Indigenous peoples in Calgary and equity-deserving populations, with 46% strongly supporting it.



Q. The Task Force recommended that the supply of affordable housing meets the needs of Indigenous people living in Calgary and equity deserving populations. This would include reducing barriers to accessing housing, and making more land and funding available to build more housing that is culturally appropriate. [Interviewer Note: "Equity deserving populations" includes those facing barriers due to gender identity, race, sexual orientation, physical abilities, or other characteristics.] To what extent do you support or oppose this recommendation?

Base: Valid respondents (n=500)

Concerns with recommendation 3: supply that meets the needs of equity-deserving populations

Feeling that housing affordability policies should focus on other demographics, or everyone, was the top concern among those not strongly supporting recommendation 3 (n=272), mentioned by 30% of these respondents.

Concerns with recommendation 3	% (n=272)
Policies should focus on addressing housing affordability for other demographics / everyone	30%
Equity-deserving populations receive other supports	9%
Opposed to recommendation (in general)	8%
Concerns about implementation / feasibility	5%
Concerns about costs / tax increases / loss of assets for The City	4%
Other	4%
Don't have concerns / agree with recommendation	10%
Don't know / need more information	26%

Q. What concerns, if any, do you have with this recommendation?
Base: Respondents that did not “strongly support” recommendation 3 (n=272)

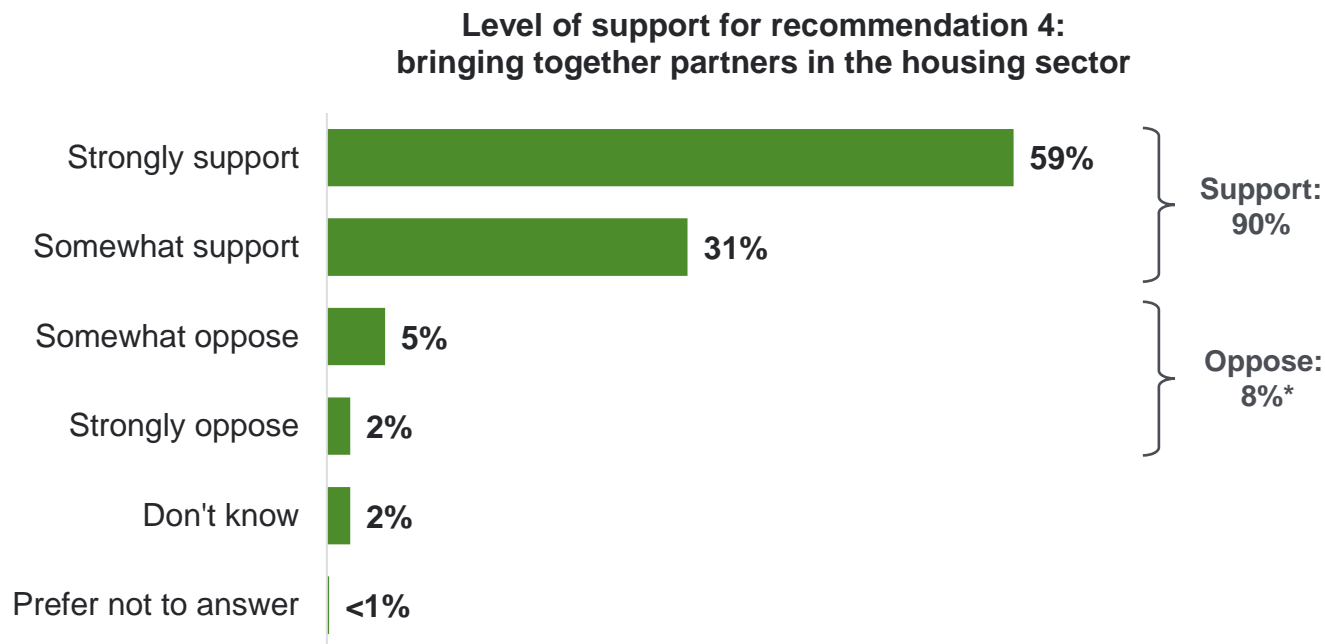
Open-ended comments

Multiple responses allowed

Mentions <3% not shown

Perceptions of recommendation 4: housing sector partner collaboration

The majority (90%) support the recommendation of bringing together partners in the housing sector, and 59% strongly support it.



Q. The Task Force recommended that The City brings together partners in the housing sector to collaborate on developing new housing supply, reducing stigma, and building more awareness in the community about affordable housing, permanent supportive housing, and homelessness. To what extent do you support or oppose this recommendation?

Base: Valid respondents (n=500)

*Rounding

Concerns with recommendation 4: housing sector partner collaboration

Of those not strongly supporting recommendation 4 (n=200), concerns about people taking advantage of the system (10%), implementation or feasibility (9%) as well as costs or tax increases (8%) were the top mentioned reasons.

Concerns with recommendation 4	% (n=200)
Concerns about people (residents, homeowners, homebuilders, etc) taking advantage of the system	10%
Concerns about implementation / feasibility	9%
Concerns about costs / tax increases / loss of assets for The City	8%
Policies should focus on addressing housing affordability for other demographics / everyone	6%
Opposed to recommendation (in general)	5%
Concerns about new housing actually being affordable	4%
Concerns that this will not fix homelessness	4%
Population density / overcrowding / infrastructure concerns	3%
Lack of trust in government / ability of government to solve issue	3%
House prices / market value concerns	3%
Safety concerns	3%
Other	9%
Don't have concerns / agree with recommendation	12%
Don't know / need more information	28%

Q. What concerns, if any, do you have with this recommendation?

Base: Respondents that did not “strongly support” recommendation 4 (n=200)

Open-ended comments

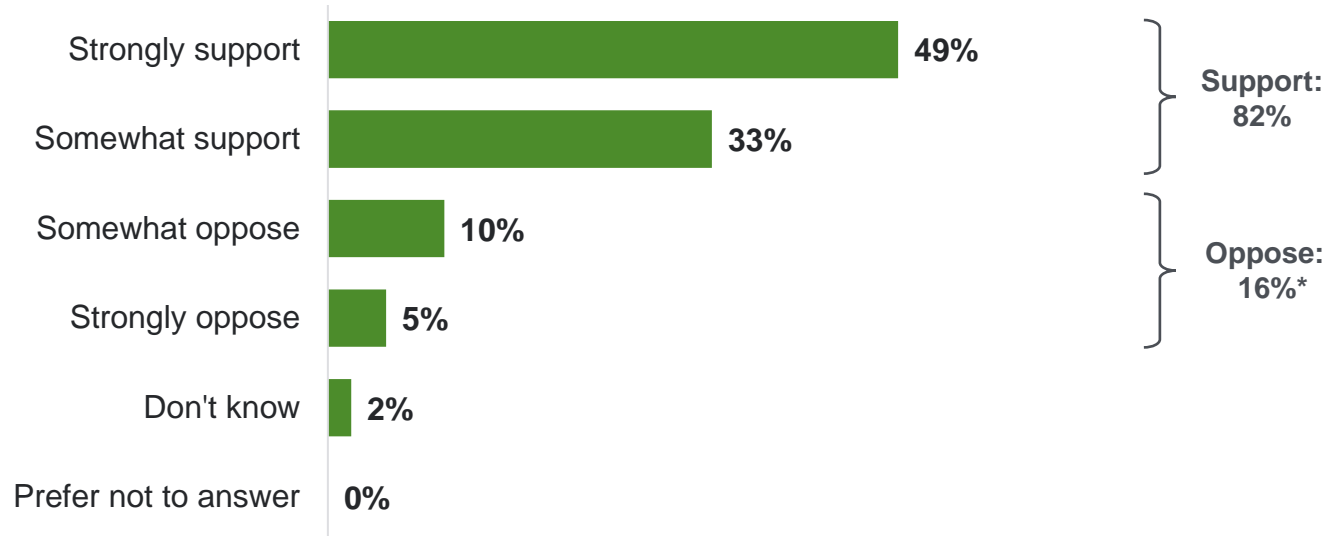
Multiple responses allowed

Mentions <3% not shown

Recommendation 5: increase investment to support affordable housing providers

82% support the recommendation to increase investment to support affordable housing providers, with 49% strongly agreeing.

**Level of support for recommendation 5:
increasing investment to support affordable housing providers**



Q. The Task Force recommended increasing investment to support affordable housing providers, which would include advocating to the provincial and federal governments for affordable housing funding, and eliminating property taxes for non-profit organizations that provide affordable housing. To what extent do you support or oppose this recommendation?

Base: Valid respondents (n=500)

*Rounding

Concerns with recommendation 5: increase investment to support affordable housing providers

Of those who did not strongly support recommendation 5 (n=256), the top concerns were around costs or tax increases (20%) and not being in favour of completely eliminating property taxes for non-profit organizations (19%).

Concerns with recommendation 5	% (n=256)
Concerns about costs / tax increases / loss of assets for The City	20%
Not in favor of completely eliminating property taxes for non-profit organizations	19%
Concerns about people (residents, homeowners, homebuilders, etc) taking advantage of the system	9%
Concerns about non-profit organizations (e.g. belief that they will take advantage/profit off of government support)	5%
Lack of trust in government / ability of government to solve issue	5%
Concerns that this will not fix homelessness	3%
Other	3%
Don't have concerns / agree with recommendation	12%
Don't know / need more information	24%

Q. What concerns, if any, do you have with this recommendation?
Base: Respondents that did not “strongly support” recommendation 5 (n=256)

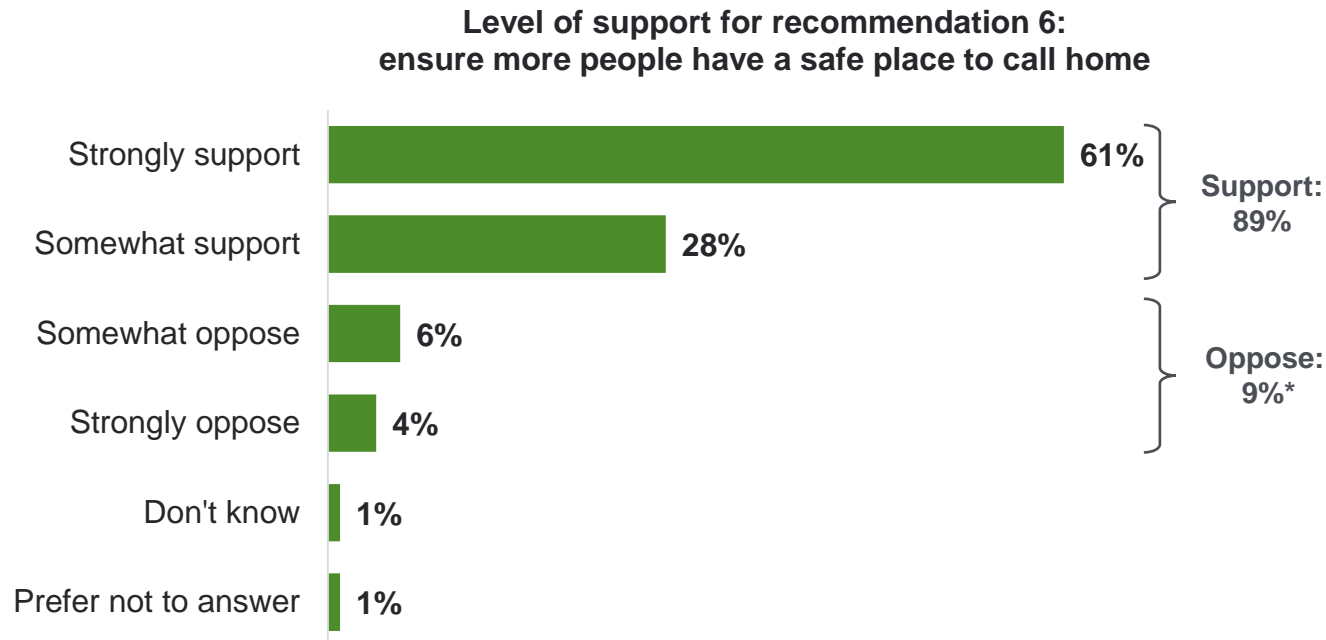
Open-ended comments

Multiple responses allowed

Mentions <3% not shown

Recommendation 6: ensure more people have a safe place to call home

89% support, and 61% strongly support, the recommendation to ensure more people have a safe place to call home, which involves improving living conditions for people in rental housing.



Q. The Task Force recommended making sure more people have a safe place to call home. Tasks to achieve this would include increasing renters' awareness of their rights, looking at rent-control models used in other cities or provinces, advocating to the Province to improve minimum health and housing standards, and funding programs that can prevent Calgarians from becoming unhoused. To what extent do you support or oppose this recommendation?

Base: Valid respondents (n=500)

*Rounding

Concerns with recommendation 6: ensure more people have a safe place to call home

Rent control issues (19%) are the top concern among respondents not strongly supporting recommendation 6 (n=202), including rent controls negatively affecting landlords or homeowners (6%).

Concerns with recommendation 6	% (n=202)
NET Issues with rent control	19%
Concerns about / not in favor of rent control (other / general comments)	8%
Rent control negatively affects landlords / homeowners	6%
Rent control doesn't work / is not effective	4%
Rent control interferes with the free market / competition	3%
Concerns about costs / tax increases / loss of assets for The City	8%
Opposed to recommendation (general mentions)	6%
Concerns about people (residents, homeowners, homebuilders, etc) taking advantage of the system	5%
Concerns about implementation / feasibility	5%
Government should have other priorities	4%
Lack of trust in government / ability of government to solve issue	3%
Population density / overcrowding / infrastructure concerns	3%
Other	4%
Don't have concerns / agree with recommendation	18%
Don't know / need more information	25%

Q. What concerns, if any, do you have with this recommendation?
Base: Respondents that did not "strongly support" recommendation 6 (n=202)

Open-ended comments

Multiple responses allowed

Mentions <3% not shown

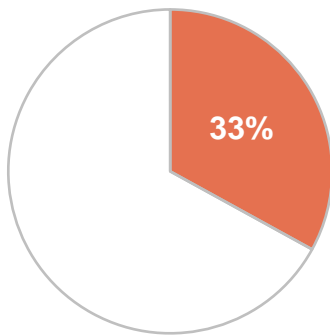


Respondent profile

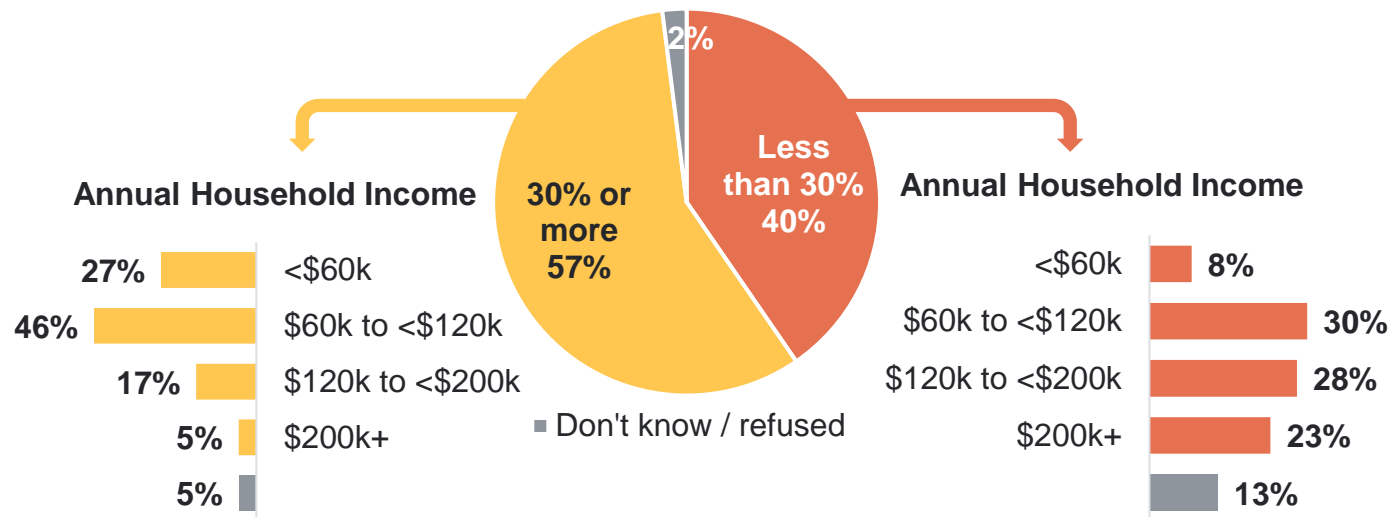
Housing spending

On average, respondents indicated they spend one-third (33%) of their monthly household income before tax on housing. Among those spending 30% or more on housing, 27% indicated their annual household income is less than \$60,000*. Conversely, among those spending less than 30% of their monthly household income before tax on housing, only 8% have an annual household income less than \$60,000.

Average spending on housing as percentage of household income
(n=475)



Spending on housing as percentage of household income
(n=500)



Q. Approximately what percentage of your total monthly household monthly income, before tax, would you say you spend on the rent or mortgage payment for the home you currently live in? / Q. Can you tell me whether you think you spend more than or less than thirty percent of your total monthly household income before tax on your rent or mortgage? / Q. Which of the following categories best describes the total annual income, before taxes, of all the members of your household?

Base: Those who provided a response (see base sizes in chart)

*Reflects the housing affordability threshold (earn less than 65% of the Calgary Area Median Income)

Respondent profile

Home ownership

Own	65%
Rent	33%
Neither / other	1%
Prefer not to answer	<1%

Years living in current home

5 years or less	47%
6 to 10 years	16%
11 to 20 years	19%
More than 20 years	17%
Don't know	<1%

Location in Calgary

Inner city	24%
Outside inner city	76%

Home type

Single-detached	59%
Apartment or apartment-style condo building	19%
Duplex or semi-detached	9%
Townhouse	8%
Another type of multi-unit complex	4%
Rowhouse	1%
Don't know / prefer not to answer	1%

Number of people in household

1	17%
2	34%
3 - 4	38%
5 or more	11%
Prefer not to answer	1%

Quadrant

Southwest	28%
Southeast	24%
Northwest	28%
Northeast	20%

Household income

Less than \$60,000	20%
\$60,000 to <\$120,000	39%
\$120,000 to <\$200,000	21%
\$200,000 and over	12%
Don't know	2%
Prefer not to answer	6%

Household composition

Children in household	32%
Seniors in household	26%

Base: Valid respondents (n=500)

Respondent profile (continued)

Age	
18 to 24	5%
25 to 34	24%
35 to 44	17%
45 to 54	21%
55 to 64	14%
65 or older	19%

Years lived in Calgary	
Less than 5 years	7%
5 to 10 years	12%
11 to 20 years	21%
21 to 30 years	23%
More than 30 years	37%

Gender	
Female	50%
Male	50%
Prefer to self-describe	<1%
Prefer not to answer	<1%

LGBTQ2S+ community	
Yes	8%
No	90%
Prefer not to answer	2%

Indigenous identity*	
Yes – First Nations	1%
Yes – Métis	5%
Yes - Prefer to self-describe	<1%
Yes – Inuit	0%
No	94%
Prefer not to answer	<1%

Born in Canada	
Yes	74%
No	26%
Prefer not to answer	<1%

Racialized*	
Yes	22%
No	75%
Prefer to self-describe	1%
Prefer to not to answer	2%

Disability in household*	
Yes – myself	10%
Yes – someone in my household	9%
No	83%
Prefer not to answer	2%

Base: Valid respondents (n=500)

*Multiple responses allowed



Contact

The Corporate Research Team
Customer Service and Communications
The City of Calgary
research@calgary.ca



Appendix: questionnaire

Questionnaire

2023 Housing Affordability Survey City of Calgary

Generated on 2023-05-11 at 10:02:42 MT



INTRO

Int0

Hello, I'm _____ with Advanis, calling on behalf of The City of Calgary. We are conducting a study about housing affordability in Calgary and would like to include your input. Are you 18 years of age or older and do you currently live in Calgary?

IF CREDIBILITY IS AN ISSUE OR IF RESPONDENT HAS A CONCERN SAY: If you wish to talk to a [City official](#) about this survey, we encourage you to contact The City at 311 and specifically mention the "2023 Perspectives on Calgary Survey". City Staff would be happy to address your concerns.

IF ASKED: The survey will take approximately 15 to 20 minutes.

- ☐ 1 Yes
- ☐ 2 No, getting an adult *(Show if is landline (phonetype = 1))*
- ☐ 3 No, refusal
- ☐ 4 No, callback
- ☐ 5 No, under 18 *(Show if is wireless (phonetype = 2))*
- ☐ 6 No, does not live in Calgary

Int0b *Show if getting person (Int0 = 2)*

Hello, I'm _____ with Advanis, calling on behalf of The City of Calgary. We are conducting a study about housing affordability in Calgary and would like to include your input. Are you 18 years of age or older and do you currently live in Calgary?

IF CREDIBILITY IS AN ISSUE OR IF RESPONDENT HAS A CONCERN SAY: If you wish to talk to a [City official](#) about this survey, we encourage you to contact The City at 311 and specifically mention the "2023 Perspectives on Calgary Survey". City staff would be happy to address your concerns.

IF ASKED: The survey will take approximately 15 to 20 minutes.

- ☐ 1 Yes
- ☐ 2 No, refusal
- ☐ 3 No, callback
- ☐ 4 No, under 18 *(Show if is wireless (phonetype = 2))*
- ☐ 5 No, does not live in Calgary

SCREENERS

QS7

Great! Your participation is [voluntary](#) and this call may be recorded for quality control purposes. The survey will take approximately 15 to 20 minutes and your responses will remain confidential, and you will not be personally identified. Any personal information collected in this survey is done so under the authority of the Freedom of Information and Protection of Privacy Act, Section 33(c) and is used solely for the review and improvement of City of Calgary programs and services.

If you have questions about the collection or use of your information, you can contact a City of Calgary Research Coordinator. Would you like me to provide you with their contact information?

- ☐ 1 Yes
- ☐ 2 No
- ☐ 3 Refusal
- ☐ 4 Call back later

QS7info *Show if QS7 Yes (QS7 = 1)*

You can contact a City of Calgary Research Coordinator via phone, email, or regular mail and mention the "2023 Perspectives on Calgary Survey". What contact information would you prefer?

If phone: 403-268-5287

If email: research@calgary.ca

If mail: Research Coordinator, The City of Calgary, Mail code 8305, P.O. Box 2100, Station M, Calgary, AB Canada T2P 2M5

QSEX

DO NOT ASK; RECORD GENDER

- ☐ 1 Male
- ☐ 2 Female

QS4

Which of the following age groups do you belong to? Just stop me when I get to your age group.

- ☐ 1 18 to 19
- ☐ 2 20 to 24
- ☐ 3 25 to 34
- ☐ 4 35 to 44
- ☐ 5 45 to 54
- ☐ 6 55 to 64
- ☐ 7 65 to 74
- ☐ 8 75 and older
- ☐ 9 **[DO NOT READ]** Prefer not to say

Questionnaire (continued)

QS1

Can you tell me which quadrant of the city you live in?

WAIT FOR RESPONSE – READ LIST TO CLARIFY IF NEEDED.

- ☐ 1 Southwest
- ☐ 2 Southeast
- ☐ 3 Northwest
- ☐ 4 Northeast
- ☐ 5 [DO NOT READ] Prefer not to say
- ☐ 6 [DO NOT READ] Does not live in Calgary

MAIN SURVEY

A. QUALITY OF LIFE

Q1

On a scale of "1" to "10" where "1" is "very poor" and "10" is "very good" how would you rate the overall quality of life in the city of Calgary today?

RECORD NUMBER [RANGE 1-10]

Q2

Next, please indicate if you strongly agree, somewhat agree, somewhat disagree or strongly disagree with each of the following statements about life in Calgary. The first one is:

[RANDOMIZE]

Calgary is moving in the right direction to ensure a high quality of life for future [generations](#).

I am proud to be a [Calgarian](#).

Compared to other communities in Calgary, the quality of life I experience in the community I live in is good [INTERVIEWER DEFINITION: Community or neighbourhood a respondent [lives](#) in]

[SCALE]

Strongly [agree](#)

Somewhat [agree](#)

Somewhat [disagree](#)

Strongly [disagree](#)

Don't know/prefer not to answer [DO NOT READ]

C. HOUSING AFFORDABILITY TASK FORCE RECOMMENDATIONS

[SHOW HALF OF RESPONDENTS Q5A AND THE OTHER HALF Q5B]

Q5A

The next question is about housing affordability and affordable housing in Calgary. By housing affordability I'm referring to the amount a household pays for housing in relation to their total income, while affordable housing refers to housing projects that are often subsidized by government or other agencies. For each of these, please tell me if it is a significant issue, somewhat of an issue, not really an issue, or not an issue at all in the city of Calgary today. Starting with ...

Housing affordability [INTERVIEWER NOTE: if needed, "the amount a household pays for housing in relation to their total income"]

And how about affordable housing? [INTERVIEWER NOTE: if needed, "housing projects that are often subsidized by government or other agencies"]

[SCALE]

Significant issue

Somewhat of an issue

Not really an issue

Not an issue at all

Don't know/prefer not to answer [DO NOT READ]

Q5B

The next question is about affordable housing and housing affordability in Calgary. By affordable housing I'm referring to housing projects that are often subsidized by government or other agencies, while housing affordability refers to the amount a household pays for housing compared to their total income. For each of these, please tell me if it is a significant issue, somewhat of an issue, not really an issue, or not an issue at all in the city of Calgary today. Starting with ...

Affordable housing [INTERVIEWER NOTE: if needed, "housing projects that are often subsidized by government or other agencies"]

And how about housing affordability? [INTERVIEWER NOTE: if needed, "the amount a household pays for housing in relation to their total income"]

[SCALE]

Significant issue

Somewhat of an issue

Not really an issue

Not an issue at all

Don't know/prefer not to answer [DO NOT READ]

[HATF PREAMBLE]

Calgary's Housing and Affordability Task Force recently presented several recommendations related to housing policy in Calgary, from homelessness to market housing. The Task Force was made up of 15 members who made these recommendations to City Council.

Questionnaire (continued)

The next questions are about your opinions on the Task Force's recommendations.

[RANDOMIZE THE ORDER OF THE NEXT SIX QUESTION BLOCKS]

[BLOCK 1]

Q6A [RECOMMENDATION 1]

The Task Force recommended building more housing across the city, including allowing for a variety of housing forms, such as a single detached home, semi-detached and rowhouses on parcels that currently only allow for a single detached home and 1 suite. This doesn't mean that all parcels will redevelop, but if a property owner wants to redevelop, there are opportunities for more housing choice whenever redevelopment becomes an option for that property owner. It also includes creating incentives for more affordable market and non-market housing. [INTERVIEWER NOTE: If needed, non-market housing is "permanent housing subsidized by government agencies"]

To what extent do you support or oppose this recommendation? Do you...

[SCALE]

Strongly support
Somewhat support
Somewhat oppose
Strongly oppose
Don't know [DO NOT READ]
Prefer not to answer [DO NOT READ]

[IF SOMEWHAT SUPPORT, SOMEWHAT OPPOSE OR STRONGLY OPPOSE ASK Q6B. ALL OTHERS SKIP TO NEXT QUESTION.]

Q6B

What concerns, if any, do you have with this recommendation? [OPEN-END]

[BLOCK 2]

Q7A [RECOMMENDATION 2]

The Task Force recommended making more City-owned land available to create more below-market housing across the city. Tasks to achieve this would include using existing City land or providing funding to create non-market housing, identifying City-owned land that can be used to build new affordable housing units, and making it easier for non-market housing builders to access City-owned land.

To what extent do you support or oppose this recommendation?

[SCALE]

Strongly support
Somewhat support
Somewhat oppose
Strongly oppose
Don't know [DO NOT READ]
Prefer not to answer [DO NOT READ]

[IF SOMEWHAT SUPPORT, SOMEWHAT OPPOSE OR STRONGLY OPPOSE ASK Q7B. ALL OTHERS SKIP TO NEXT QUESTION.]

Q7B

What concerns, if any, do you have with this recommendation? [OPEN-END]

[BLOCK 3]

Q8A [RECOMMENDATION 3]

The Task Force recommended that the supply of affordable housing meets the needs of Indigenous people living in Calgary and equity deserving populations. This would include reducing barriers to accessing housing, and making more land and funding available to build more housing that is culturally appropriate. [INTERVIEWER NOTE: "Equity deserving populations" includes those facing barriers due to gender identity, race, sexual orientation, physical abilities, or other characteristics.]

To what extent do you support or oppose this recommendation? Do you...

[SCALE]

Strongly support
Somewhat support
Somewhat oppose
Strongly oppose
Don't know [DO NOT READ]
Prefer not to answer [DO NOT READ]

[IF SOMEWHAT SUPPORT, SOMEWHAT OPPOSE OR STRONGLY OPPOSE ASK Q8B. ALL OTHERS SKIP TO NEXT QUESTION.]

Q8B

What concerns, if any, do you have with this recommendation? [OPEN-END]

[BLOCK 4]

Q9A [RECOMMENDATION 4]

The Task Force recommended that The City brings together partners in the housing sector to collaborate on developing new housing supply, reducing stigma, and building more awareness in the community about affordable housing, permanent supportive housing, and homelessness.

To what extent do you support or oppose this recommendation? Do you...

Questionnaire (continued)

[SCALE]

Strongly support
Somewhat support
Somewhat oppose
Strongly oppose
Don't know [DO NOT READ]
Prefer not to answer [DO NOT READ]

[IF SOMEWHAT SUPPORT, SOMEWHAT OPPOSE OR STRONGLY OPPOSE ASK Q9B. ALL OTHERS SKIP TO NEXT QUESTION.]

Q9B

What concerns, if any, do you have with this recommendation? [OPEN-END]

[BLOCK 5]

Q10A [RECOMMENDATION 5]

The Task Force recommended increasing investment to support affordable housing providers, which would include advocating to the provincial and federal governments for affordable housing funding, and eliminating property taxes for non-profit organizations that provide affordable housing.

To what extent do you support or oppose this recommendation? Do you...

[SCALE]

Strongly support
Somewhat support
Somewhat oppose
Strongly oppose
Don't know [DO NOT READ]
Prefer not to answer [DO NOT READ]

[IF SOMEWHAT SUPPORT, SOMEWHAT OPPOSE OR STRONGLY OPPOSE ASK Q10B. ALL OTHERS SKIP TO NEXT QUESTION.]

Q10B

What concerns, if any, do you have with this recommendation? [OPEN-END]

[BLOCK 6]

Q11A

The Task Force recommended making sure more people have a safe place to call home. Tasks to achieve this would include increasing renters' awareness of their rights, looking at rent-control models used in other cities or provinces, advocating to the Province to improve minimum health and housing standards, and funding programs that can prevent Calgarians from becoming unhoused.

To what extent do you support or oppose this recommendation?

[SCALE]

Strongly support
Somewhat support
Somewhat oppose
Strongly oppose
Don't know [DO NOT READ]
Prefer not to answer [DO NOT READ]

[IF SOMEWHAT SUPPORT, SOMEWHAT OPPOSE OR STRONGLY OPPOSE ASK Q11B. ALL OTHERS SKIP TO NEXT QUESTION.]

Q11B

What concerns, if any, do you have with this recommendation? [OPEN-END]

D. HOUSING AND LIVING CHARACTERISTICS

Q12

In which community do you live?

IF RESPONDENT SAYS "DOWNTOWN" ASK: Would that be the downtown core, the Beltline, East Village, Chinatown, Eau Claire or Downtown West?

IF NOT ABLE TO FIND THE COMMUNITY ON THE LIST, ENTER AS "OTHER (PLEASE SPECIFY)"

- ☐ 1 [COMMUNITY LIST]
☐ 243 Other (Please Specify) _____
☐ 244 [DO NOT READ] Don't know
☐ 245 [DO NOT READ] Prefer not to answer

Q13

Approximately what percentage of your total monthly household income, before tax, would you say you spend on the rent or mortgage payment for the home you currently live in? [RECORD PERCENTAGE]

RECORD NUMBER (RANGE 0 TO 100)

I don't know [DO NOT READ]
Prefer not to answer [DO NOT READ]

[SHOW Q14 ONLY IF Q13 IS 'DON'T KNOW']

Q14"

Can you tell me whether you think you spend more than or less than thirty percent of your total monthly household income before tax on your rent or mortgage?

More than 30%

Questionnaire (continued)

Less than 30%

Don't know/prefer not to answer [DO NOT READ]

Q15

Which of the following best describes the type of home you live in?

Single-detached home [INTERVIEWER NOTE ONLY IF ASKED: A building that contains only one dwelling unit, sometimes referred to as a single-family home. It may contain a secondary suite.]

Duplex or semi-detached home [INTERVIEWER NOTE ONLY IF ASKED: Two dwelling units located side-by-side or one above and one below, each having a separate entrance]

Rowhouse [INTERVIEWER NOTE ONLY IF ASKED: Three or more dwelling units located side by side, where one side of each unit directly faces a public street]

Townhouse [INTERVIEWER NOTE ONLY IF ASKED: Three or more dwelling units located side by side with individual entrances. The units are not required to face a public street. IF MORE CONTEXT NEEDED: typically townhouse complex streets are private]

Apartment or apartment-style condo building [INTERVIEWER NOTE ONLY IF ASKED: Anything bigger than rowhouses or townhouses]

Another type of multi-unit complex [INTERVIEWER NOTE ONLY IF ASKED: This includes mobile home park, trailer park, seniors home, etc.]

Prefer not to answer [DO NOT READ]

Q16

And how long have you lived in your current home? (IF LESS THAN 1 YEAR ENTER 0)

RECORD NUMBER (RANGE 0 TO 100)

Prefer not to say [DO NOT READ]

Q17

Do you own or rent the home you currently live in?

- ☐ 1 Own
☐ 2 Rent
☐ 3 [DO NOT READ] Prefer not to answer

DEMOGRAPHICS

DQ1a Show if is wireless (phonetype = 2)

We are almost finished. I just have a few demographic questions that will allow us to group responses and to sort the information we collect.

Do you have a landline telephone number in your household? Note that this does not include cell phones, numbers that are only used by a computer or fax machine, or numbers used solely for business purposes.

- ☐ 1 Yes
☐ 2 No
☐ 9 [DO NOT READ] Prefer not to answer

DQ1b Show if is landline (phonetype = 1)

We are almost finished. I just have a few demographic questions that will allow us to group responses and to sort the information we collect.

Do you or does anyone in your household have a mobile or cellular telephone that you use for personal reasons?

- ☐ 1 Yes
☐ 2 No
☐ 9 [DO NOT READ] Prefer not to answer

Q24

How many people, including yourself, live in your household?

Minimum: 1, Maximum: 50

_____ people

☐ -8 Prefer not to answer

Q25 Show if HH Members More Than 1 (Q24 > 1)

Do you have any children under the age of 18 living in your household?

- ☐ 1 Yes
☐ 2 No
☐ 9 [DO NOT READ] Prefer not to answer

Q26 Show if HH Members More Than 1 (Q24 > 1)

(If is under 65 (QS4 = 1,2,3,4,5,6)) **Is there anyone** aged 65 years or older living in your household? (if is 65 plus (QS4 = 7,8)) **Besides yourself, is there anyone else** aged 65 years or older living in your household?

- ☐ 1 Yes
☐ 2 No

Questionnaire (continued)

☐ 9 [DO NOT READ] Prefer not to answer

Q27

How many years have you lived in Calgary?

IF LESS THAN 1 YEAR, ENTER 0

Minimum: 0, Maximum: 100

_____ years

☐ 9 [DO NOT READ] Prefer not to answer

Q28

We want to make sure our research is reflective of all Calgarians. Were you born in Canada?

DO NOT READ LIST

- ☐ 1 Yes
☐ 2 No
☐ 9 [DO NOT READ] Prefer not to answer

Q29

Are you Indigenous, that is, First Nations, Métis, or Inuit?

MULTIPLE RESPONSES ARE ACCEPTED

- ☐ 1 Yes - First Nations
☐ 2 Yes - Métis
☐ 3 Yes - Inuit
☐ 4 Yes - Prefer to self-describe (specify)

- ☐ 5 No *(Exclusive)*
☐ 9 [DO NOT READ] Prefer not to answer *(Exclusive)*

Q30 *Show if Not Indigenous (Q29_5 = 1 OR Q29_99 = 1)*

Do you consider yourself a racialized person? A racialized person means someone, other than Indigenous people, who are non-Caucasian in race or non-white in colour.

- ☐ 1 Yes
☐ 2 No
☐ 99 Prefer to self-describe (specify)
☐ 99 [DO NOT READ] Prefer not to answer

Q31a

Which of the following categories best describes the total annual income, before taxes, of all the members of your household? Please stop me when I get to your category.

READ LIST

- ☐ 1 Less than \$965000
 \$60,000 to just under \$120,000
 \$120,000 to just under \$200,000
 \$200,000 and over
☐ 2
☐ 3
☐ 9 [DO NOT READ] Don't Know
☐ 10 [DO NOT READ] Prefer not to answer

Q32

And what is your gender?

DO NOT READ EXCEPT TO CLARIFY.

IF NECESSARY - Gender refers to the gender that a person internally feels and/or the gender a person publicly expresses in their daily life, including at work, while shopping, or accessing other services, in their home or in the broader community.

- ☐ 1 Male
☐ 2 Female
☐ 99 Prefer to self-describe (specify.)
☐ 99 [DO NOT READ] Prefer not to answer

Q33

Do you or a member of your household have a disability?

DO NOT READ LIST

- ☐ 1 Yes - myself
☐ 2 Yes - someone in my household
☐ 3 No *(Exclusive)*
☐ 4 [DO NOT READ] Prefer not to answer *(Exclusive)*

Q34

Do you consider yourself to be a member of the 2SLGBTQIA+ community?

ONLY IF ASKED: 2SLGBTQIA+ STANDS FOR TWO SPIRIT, LESBIAN, GAY, BI-SEXUAL, TRANSGENDER, QUEER OR QUESTIONING, INTERSEX AND ASEXUAL, WITH THE PLUS RECOGNIZING THERE IS ALSO A WIDE SPECTRUM OF IDENTITIES BEYOND THOSE IN THE ACRONYM

- ☐ 1 Yes

Questionnaire (continued)

- ☐ 2 No
☐ 9 [\[DO NOT READ\]](#) Prefer not to answer

Q35a

Would you be interested in participating in future research related to The City of Calgary?

- ☐ 1 Yes
☐ 2 No
☐ 3 [\[DO NOT READ\]](#) Don't know

Q35b Show if Willing to Participate in Future Research (Q35a = 1)

Could I please have an email address where we can contact you?

Read back email address phonetically to confirm.

- ☐ -8 Prefer not to answer

Q35c Show if Willing to Participate in Future Research (Q35a = 1)

Could I please have your first name and confirm your telephone number?

If respondent indicates "this number is fine" please enter the phone number associated to this call.

- First name: _____
 Telephone number: _____
☐ -8 Prefer not to answer

Q35d Show if FollowUp Research Phone Number Provided ((Q35a = 1) AND NOT (Q35c_b = Prefer not to answer))

Is this phone number a cell phone or a landline?

- ☐ 1 Cell phone
☐ 2 Landline
☐ 3 [\[DO NOT READ\]](#) Prefer not to answer

Q35e Show if Willing to Participate in Future Research (Q35a = 1)

Do you own and or operate a local business in Calgary?

- ☐ 1 Yes
☐ 2 No
☐ 3 [\[DO NOT READ\]](#) Prefer not to answer

end1

This completes the survey. Thank you very much for taking the time to provide your input.